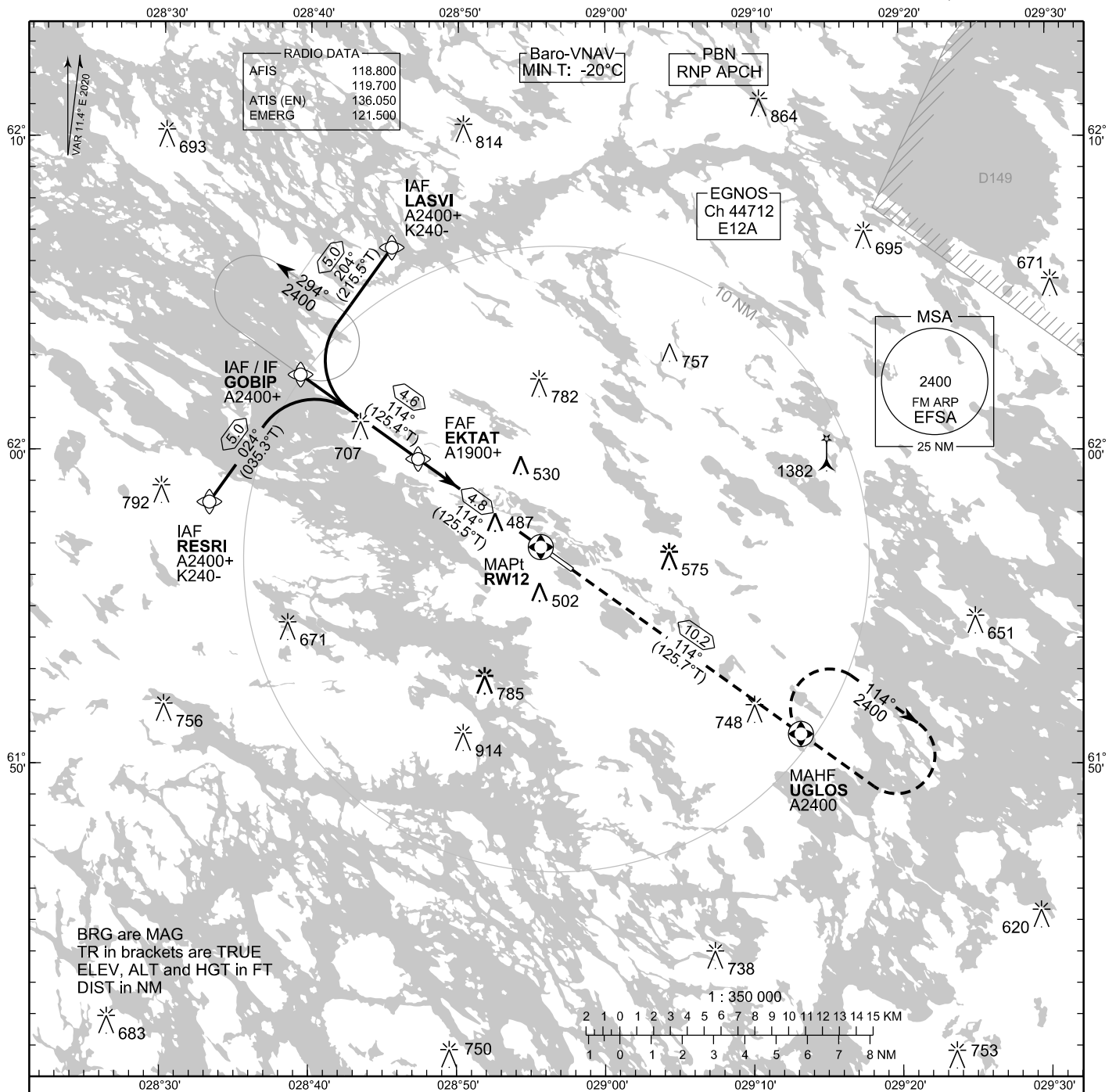


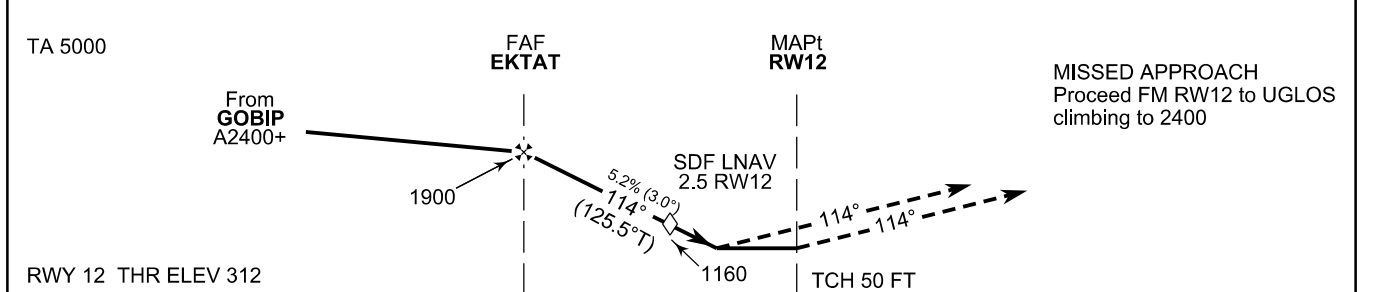
**INSTRUMENT
APPROACH CHART - ICAO**

ELEV 312 FT
HEIGHTS RELATED TO
THR RWY 12 ELEV 312 FT

**RNP RWY 12
SAVONLINNA AERODROME
SAVONLINNA, FINLAND**



CHG: Data Block REF



NM	OCA (H)				DIST FM THR			
	A	B	C	D	4.0 NM	3.0 NM	2.0 NM	
LPV	569 (257)	581 (269)	589 (277)	600 (288)	Altitude (Height)	1640 (1320)	1320 (1010)	1000 (690)
LNAV/VNAV	592 (280)	605 (293)	617 (305)	627 (315)	kt	90	100	120
LNAV	740 (430)				min:sec	3:13	2:54	2:25
Circling	800 (490)	830 (520)	970 (660)	1180 (870)	Rate of descent	ft/min	480	530
						640	740	850

Timing not authorized for defining the MAPt

EFSA RNP RWY 12										
PROC ID NAV SPEC	SEQ NR	P/T	WPT			MAG	GEO TR	DIST NM	Constraints	
			ID	Type	Flyover				LVL	Speed
H12 LASVI RNP APCH	005	IF	LASVI	IAF	-				A2400+	K240-
	010	TF	GOBIP	IF	-	204°	215.5°T	5.0	A2400+	
	020	TF	EKTAT	FAF	-	114°	125.4°T	4.6	A1900+	
	030	TF	RW12	MAPt	Y	114°	125.5°T	4.8		
	040	TF	UGLOS	MAHF	Y	114°	125.7°T	10.2	A2400	

EFSA RNP RWY 12										
PROC ID NAV SPEC	SEQ NR	P/T	WPT			MAG	GEO TR	DIST NM	Constraints	
			ID	Type	Flyover				LVL	Speed
H12 GOBIP RNP APCH	010	IF	GOBIP	IAF/IF	-				A2400+	
	020	TF	EKTAT	FAF	-	114°	125.4°T	4.6	A1900+	
	030	TF	RW12	MAPt	Y	114°	125.5°T	4.8		
	040	TF	UGLOS	MAHF	Y	114°	125.7°T	10.2	A2400	

EFSA RNP RWY 12										
PROC ID NAV SPEC	SEQ NR	P/T	WPT			MAG	GEO TR	DIST NM	Constraints	
			ID	Type	Flyover				LVL	Speed
H12 RESRI RNP APCH	005	IF	RESRI	IAF	-				A2400+	K240-
	010	TF	GOBIP	IF	-	024°	035.3°T	5.0	A2400+	
	020	TF	EKTAT	FAF	-	114°	125.4°T	4.6	A1900+	
	030	TF	RW12	MAPt	Y	114°	125.5°T	4.8		
	040	TF	UGLOS	MAHF	Y	114°	125.7°T	10.2	A2400	

RNAV Holdings							
ID	INBD TR	INBD MAG	Turn Direction	Speed	MNM HLDG LVL	TIME	DIST NM
GOBIP	125.4°T	114°	Left	K230-	A2400	1 MIN	-
UGLOS	305.7°T	294°	Right	K230-	A2400	1 MIN	-

WPT COORD
SEE PAGE EFSA AD 2.15 - 1

FINAL APPROACH PARAMETERS			
LNAV Gradient	Baro-VNAV		TCH
	VPA	MNM T	
5.24 % (3.00°)	3.00°	-20°C	50 FT

SBAS DATA	
Approach ID	E12A
Service Provider	EGNOS
CRC remainder	9A 54 2B CA
Channel number	44712
Data Block	SEE EFSA AD 2.15 - 3