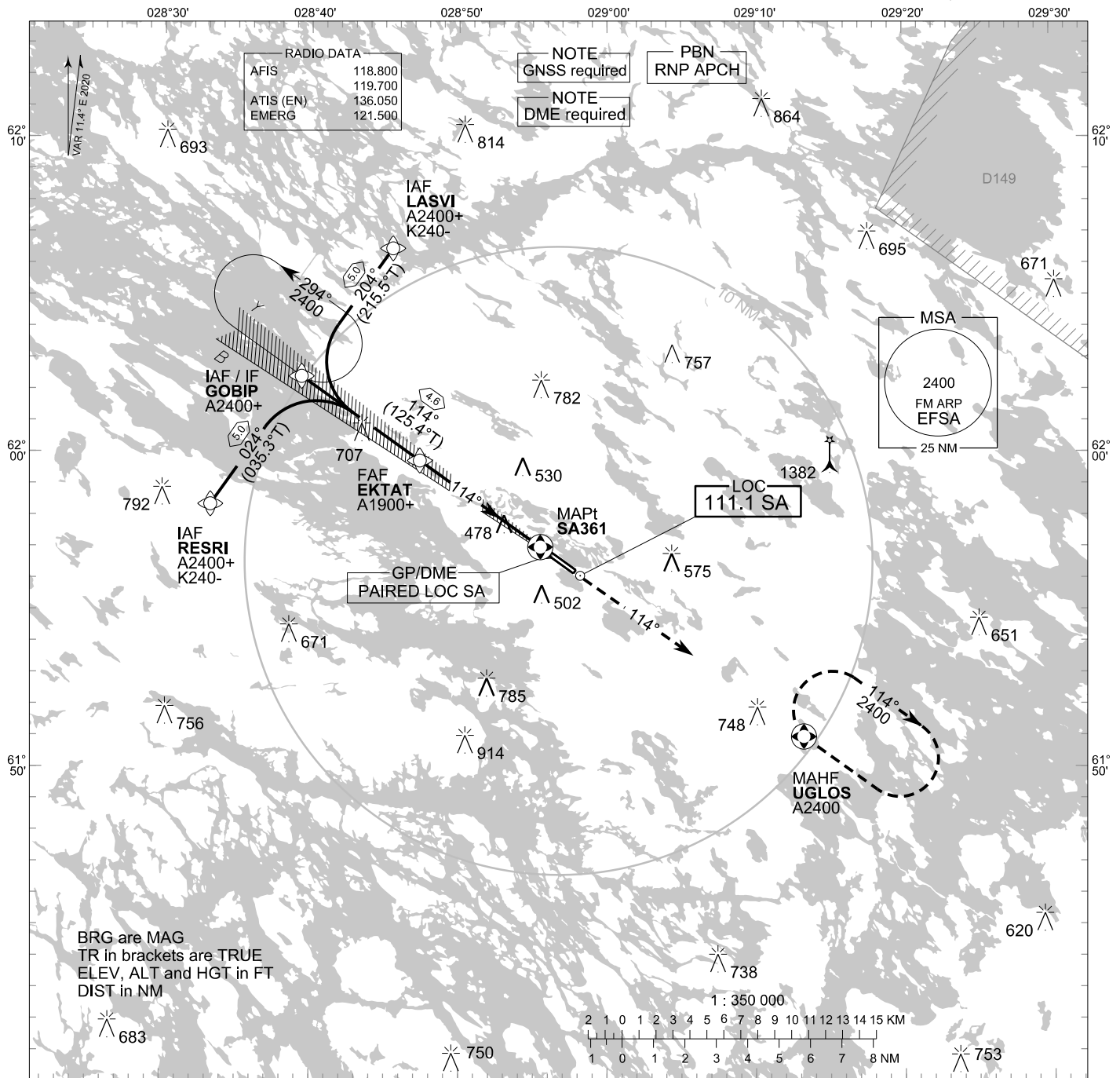


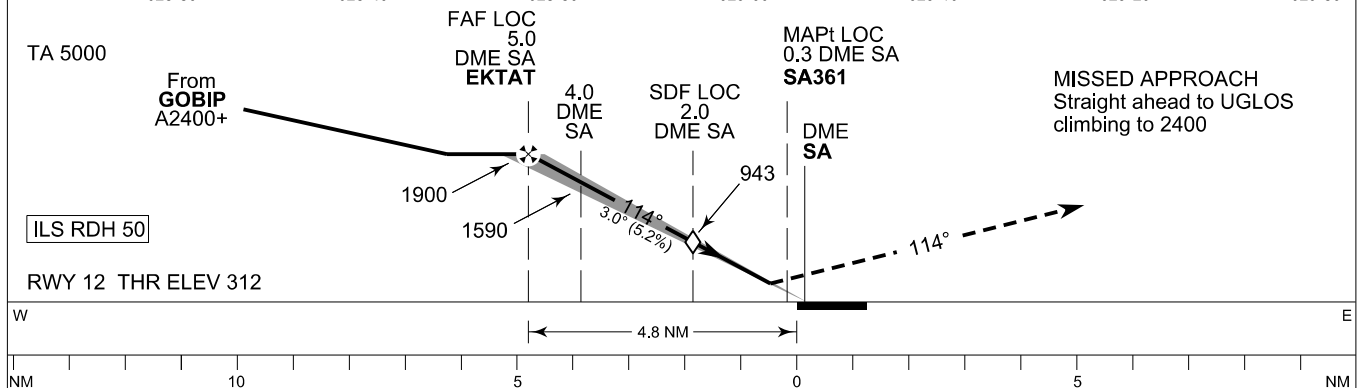
**INSTRUMENT
APPROACH CHART - ICAO**

ELEV 312 FT
HEIGHTS RELATED TO
THR RWY 12 ELEV 312 FT

ILS or LOC RWY 12
SAVONLINNA AERODROME
SAVONLINNA, FINLAND



CHG: MAG VAR, OCA(H), IAF/IF



	OCA (H)	A	B	C	D
ILS CAT I		462 (150)	472 (160)	481 (169)	493 (181)
LOC		720 (410)			
LOC WO SDF		940 (630)			
Circling		800 (490)	830 (520)	970 (660)	1180 (870)

	kt	90	100	120	140	160
FAF - MAPt 4.7 NM	min:sec	3:09	2:50	2:22	2:02	1:46
Rate of descent	ft/min	480	530	640	740	850

Timing not authorized for defining the MAPt

EFSA ILS or LOC RWY 12										
PROC ID NAV SPEC	SEQ NR	P/T	WPT			MAG GEO TR	DIST NM	Turn Direction	Constraints	
			ID	Type	Flyover				LVL	Speed
I12 LASVI RNP APCH	005	IF	LASVI	IAF	-	204°	5.0	L	A2400+	K240-
	010	TF	GOBIP	IF	-	215.5°T			A2400+	
	020	TF	EKTAT	FAF LOC	-	114° 125.4°T	4.6		A1900+	
	030	TF	SA361	MAPt LOC	Y	114° 125.4°T	-			
	040	CA	-	-	-	-	-		A800+	
	050	TF	UGLOS	MAHF	Y	-	-		A2400	

EFSA ILS or LOC RWY 12										
PROC ID NAV SPEC	SEQ NR	P/T	WPT			MAG GEO TR	DIST NM	Turn Direction	Constraints	
			ID	Type	Flyover				LVL	Speed
I12 GOBIP RNP APCH	010	IF	GOBIP	IAF/IF	-	114°	4.6		A2400+	
	020	TF	EKTAT	FAF LOC	-	125.4°T			A1900+	
	030	TF	SA361	MAPt LOC	Y	114° 125.4°T	-			
	040	CA	-	-	-	-	-		A800+	
	050	TF	UGLOS	MAHF	Y	-	-		A2400	

EFSA ILS or LOC RWY 12										
PROC ID NAV SPEC	SEQ NR	P/T	WPT			MAG GEO TR	DIST NM	Turn Direction	Constraints	
			ID	Type	Flyover				LVL	Speed
I12 RESRI RNP APCH	005	IF	RESRI	IAF	-	024°	5.0	R	A2400+	K240-
	010	TF	GOBIP	IF	-	035.3°T			A2400+	
	020	TF	EKTAT	FAF LOC	-	114° 125.4°T	4.6		A1900+	
	030	TF	SA361	MAPt LOC	Y	114° 125.4°T	-			
	040	CA	-	-	-	-	-		A800+	
	050	TF	UGLOS	MAHF	Y	-	-		A2400	

RNAV Holdings							
ID	INBD TR	INBD MAG	Turn Direction	MAX IAS	MNM HLDG LVL	TIME	DIST NM
GOBIP	125.4°T	114°	Left	230 KT	A2400	1 MIN	-
UGLOS	305.7°T	294°	Right	230 KT	A2400	1 MIN	-

WPT COORD
SEE PAGE EFSA AD 2.15 - 1

FINAL APPROACH PARAMETERS			
LOC Gradient	ILS		RDH
	CAT	GPA	
5.24 % (3.00°)	I	3.00°	50 FT