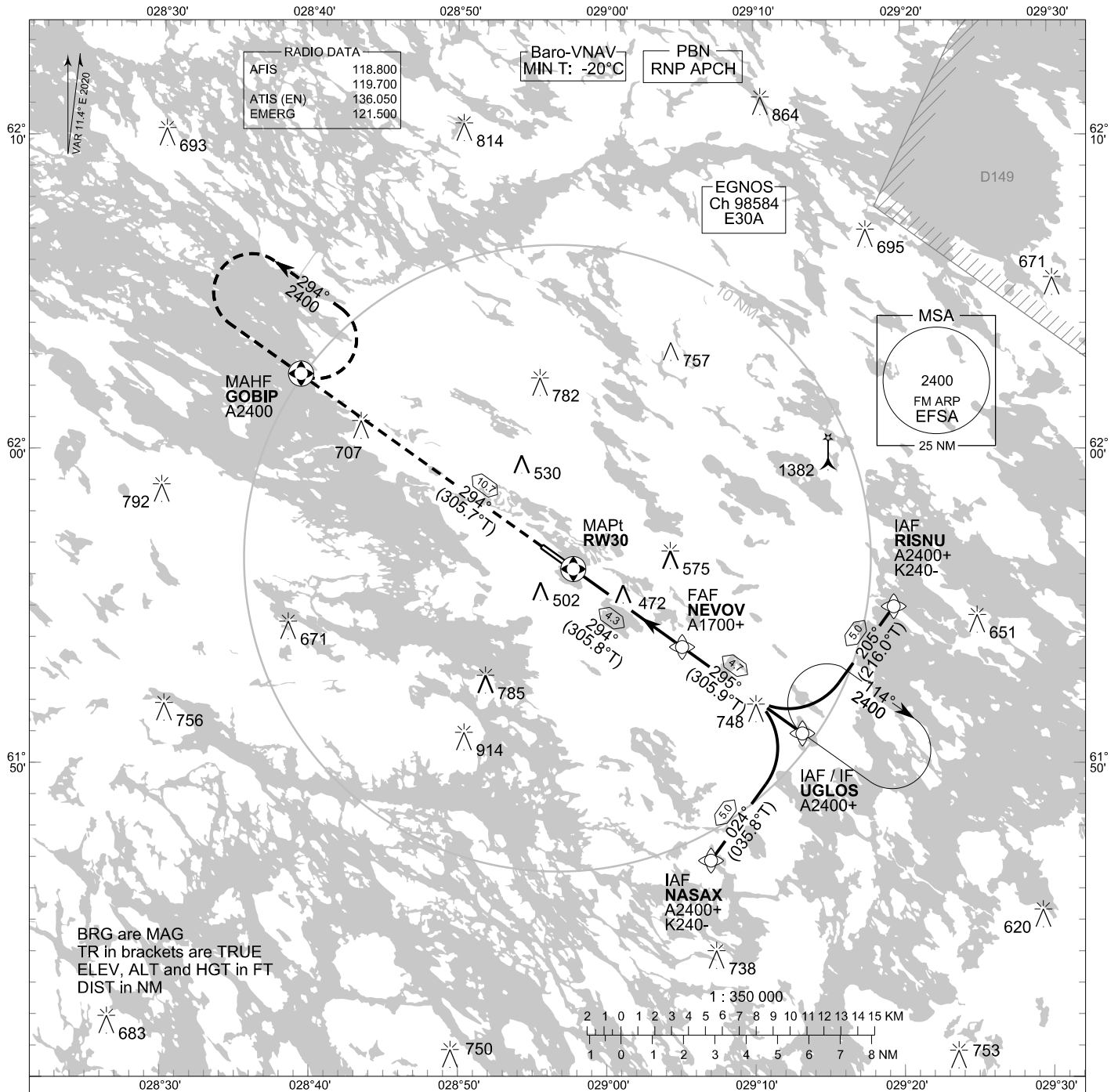


**INSTRUMENT
APPROACH CHART - ICAO**

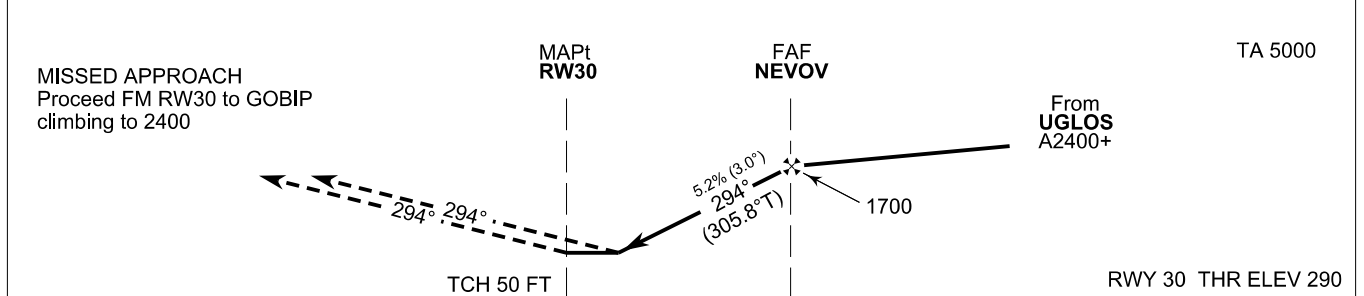
ELEV 312 FT
HEIGHTS RELATED TO
THR RWY 30 ELEV 290 FT

**RNP RWY 30
SAVONLINNA AERODROME
SAVONLINNA, FINLAND**



BRG are MAG
TR in brackets are TRUE
ELEV, ALT and HGT in FT
DIST in NM

CHG: ADDN LPV



W TCH 50 FT 4.3 NM RWY 30 THR ELEV 290 E

NM	5	0	5	10	NM
OCA (H)	A	B	C	D	
LPV	515 (225)	527 (237)	535 (245)	546 (256)	
LNAV/VNAV	576 (286)	588 (298)	602 (312)	627 (337)	
LNAV	720 (430)				
Circling	800 (490)	830 (520)	970 (660)	1180 (870)	

DIST FM THR	2.0 NM	3.0 NM	4.0 NM			
Altitude (Height)	980 (690)	1300 (1010)	1610 (1320)			
	kt	90	100	120	140	160
FAF - MAPt 4.3 NM	min:sec	2:51	2:34	2:08	1:50	1:36
Rate of descent	ft/min	480	530	640	740	850

Timing not authorized for defining the MAPt

EFSA RNP RWY 30										
PROC ID NAV SPEC	SEQ NR	P/T	WPT			MAG GEO TR	DIST NM	Turn Direction	Constraints	
			ID	Type	Flyover				LVL	Speed
H30 NASAX RNP APCH	005	IF	NASAX	IAF	-	024° 035.8°T	5.0	L	A2400+	K240-
	010	TF	UGLOS	IF	-	295° 305.9°T			4.7	A2400+
	020	TF	NEVOV	FAF	-	294° 305.8°T	4.3		A1700+	
	030	TF	RW30	MAPt	Y	294° 305.7°T		10.7		
	040	TF	GOBIP	MAHF	Y				A2400	

EFSA RNP RWY 30										
PROC ID NAV SPEC	SEQ NR	P/T	WPT			MAG GEO TR	DIST NM	Turn Direction	Constraints	
			ID	Type	Flyover				LVL	Speed
H30 UGLOS RNP APCH	010	IF	UGLOS	IAF/IF	-	295° 305.9°T	4.7		A2400+	
	020	TF	NEVOV	FAF	-	294° 305.8°T		4.3		A1700+
	030	TF	RW30	MAPt	Y	294° 305.7°T	10.7			
	040	TF	GOBIP	MAHF	Y					A2400

EFSA RNP RWY 30										
PROC ID NAV SPEC	SEQ NR	P/T	WPT			MAG GEO TR	DIST NM	Turn Direction	Constraints	
			ID	Type	Flyover				LVL	Speed
H30 RISNU RNP APCH	005	IF	RISNU	IAF	-	205° 216.0°T	5.0	R	A2400+	K240-
	010	TF	UGLOS	IF	-	295° 305.9°T			4.7	A2400+
	020	TF	NEVOV	FAF	-	294° 305.8°T	4.3		A1700+	
	030	TF	RW30	MAPt	Y	294° 305.7°T		10.7		
	040	TF	GOBIP	MAHF	Y				A2400	

RNAV Holdings							
ID	INBD TR	INBD MAG	Turn Direction	Speed	MNM HLDG LVL	TIME	DIST NM
UGLOS	305.7°T	294°	Right	K230-	A2400	1 MIN	-
GOBIP	125.4°T	114°	Left	K230-	A2400	1 MIN	-

WPT COORD
SEE PAGE EFSA AD 2.15 - 1

FINAL APPROACH PARAMETERS			
LNAV Gradient	Baro-VNAV		TCH
	VPA	MNM T	
5.24 % (3.00°)	3.00°	-20°C	50 FT

SBAS DATA	
Approach ID	E30A
Service Provider	EGNOS
CRC remainder	EF 6B D6 9C
Channel number	98584
Data Block	SEE EFSA AD 2.15 - 9