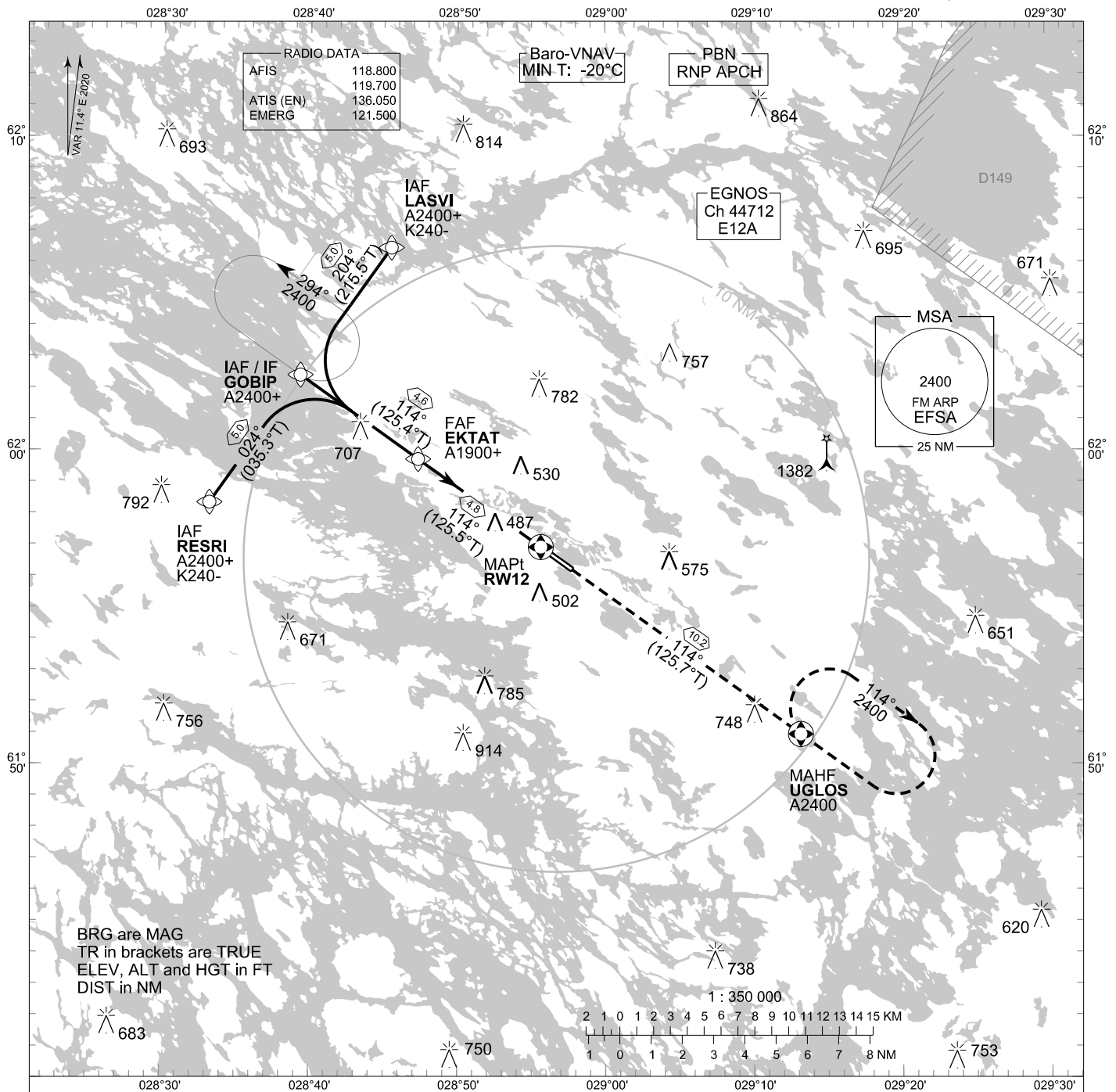


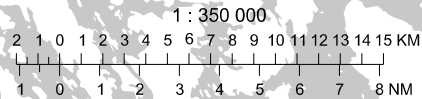
**INSTRUMENT
APPROACH CHART - ICAO**

ELEV 312 FT
HEIGHTS RELATED TO
THR RWY 12 ELEV 312 FT

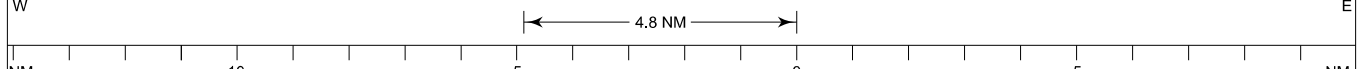
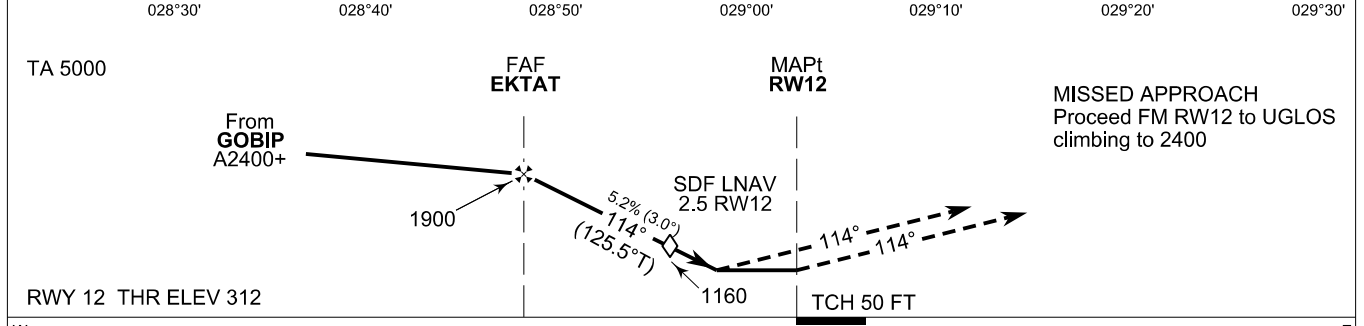
**RNP RWY 12
SAVONLINNA AERODROME
SAVONLINNA, FINLAND**



BRG are MAG
TR in brackets are TRUE
ELEV, ALT and HGT in FT
DIST in NM



CHG: REF ELEV. ADDN LPV



OCA (H)	A	B	C	D
LPV	569 (257)	581 (269)	589 (277)	600 (288)
LNAV/VNAV	592 (280)	605 (293)	617 (305)	627 (315)
LNAV	740 (430)			
Circling	800 (490)	830 (520)	970 (660)	1180 (870)

DIST FM THR	4.0 NM		3.0 NM		2.0 NM	
Altitude (Height)	1640 (1320)		1320 (1010)		1000 (690)	
	kt	90	100	120	140	160
FAF - MAPt 4.8 NM	min:sec	3:13	2:54	2:25	2:04	1:49
Rate of descent	ft/min	480	530	640	740	850

Timing not authorized for defining the MAPt

EFSA RNP RWY 12										
PROC ID NAV SPEC	SEQ NR	P/T	WPT			MAG GEO TR	DIST NM	Turn Direction	Constraints	
			ID	Type	Flyover				LVL	Speed
H12 LASVI RNP APCH	005	IF	LASVI	IAF	-	204° 215.5°T	5.0	L	A2400+	K240-
	010	TF	GOBIP	IF	-	114° 125.4°T	4.6		A2400+	
	020	TF	EKTAT	FAF	-	114° 125.5°T	4.8		A1900+	
	030	TF	RW12	MAPt	Y	114° 125.7°T	10.2			
	040	TF	UGLOS	MAHF	Y				A2400	

EFSA RNP RWY 12										
PROC ID NAV SPEC	SEQ NR	P/T	WPT			MAG GEO TR	DIST NM	Turn Direction	Constraints	
			ID	Type	Flyover				LVL	Speed
H12 GOBIP RNP APCH	010	IF	GOBIP	IAF/IF	-	114° 125.4°T	4.6		A2400+	
	020	TF	EKTAT	FAF	-	114° 125.5°T	4.8		A1900+	
	030	TF	RW12	MAPt	Y	114° 125.7°T	10.2			
	040	TF	UGLOS	MAHF	Y				A2400	

EFSA RNP RWY 12										
PROC ID NAV SPEC	SEQ NR	P/T	WPT			MAG GEO TR	DIST NM	Turn Direction	Constraints	
			ID	Type	Flyover				LVL	Speed
H12 RESRI RNP APCH	005	IF	RESRI	IAF	-	024° 035.3°T	5.0	R	A2400+	K240-
	010	TF	GOBIP	IF	-	114° 125.4°T	4.6		A2400+	
	020	TF	EKTAT	FAF	-	114° 125.5°T	4.8		A1900+	
	030	TF	RW12	MAPt	Y	114° 125.7°T	10.2			
	040	TF	UGLOS	MAHF	Y				A2400	

RNAV Holdings							
ID	INBD TR	INBD MAG	Turn Direction	Speed	MNM HLDG LVL	TIME	DIST NM
GOBIP	125.4°T	114°	Left	K230-	A2400	1 MIN	-
UGLOS	305.7°T	294°	Right	K230-	A2400	1 MIN	-

WPT COORD
SEE PAGE EFSA AD 2.15 - 1

FINAL APPROACH PARAMETERS			
LNAV Gradient	Baro-VNAV		TCH
	VPA	MNM T	
5.24 % (3.00°)	3.00°	-20°C	50 FT

SBAS DATA	
Approach ID	E12A
Service Provider	EGNOS
CRC remainder	9A 54 2B CA
Channel number	44712
Data Block	SEE EFSA AD 2.15 - 9