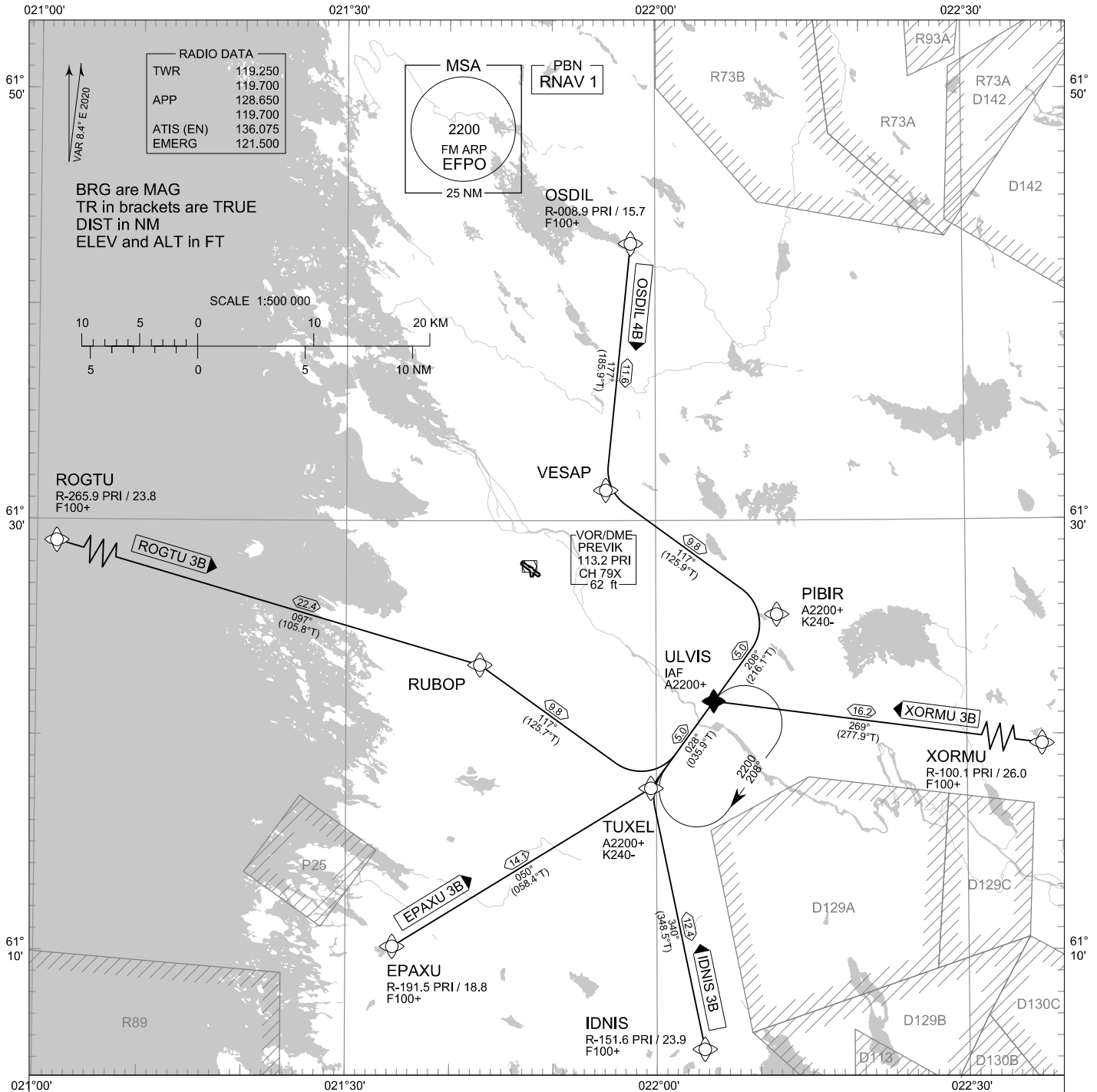


STANDARD ARRIVAL CHART
INSTRUMENT (STAR) - ICAO

TRANSITION ALT
5000

RNAV (GNSS) STAR RWY 30
PORI AERODROME
PORI, FINLAND



RNAV STAR RWY 30

EPAXU 3B IDNIS 3B OSDIL 4B ROGTU 3B XORMU 3B

DME/DME OPS: NOT SUPPORTED

AREA MNM ALT: SEE AMA INDEX, AIP ENR 6.1 - 3

ROUTES: RNAV PROC CODING ON THE VERSO OF THE CHART
ATC WILL GIVE DESCENT CLEARANCES

WPT CONSTRAINTS: ALT / FL / SPEED CONSTRAINTS MUST ALWAYS BE FOLLOWED AS
PUBLISHED UNLESS EXPLICITLY CANCELLED BY ATC

CD OPS: BY ATC CLR IF TFC PERMITS. PLAN CD PATH ACCORDING TO STAR

NOISE ABATEMENT: AVOID OVERFLYING THE CITY OF PORI BELOW 2000

RCF: SELECT TRANSPONDER CODE 7600

RNAV STAR HAS BEEN GIVEN AND ACKNOWLEDGED: FOLLOW THE
STAR TO THE RESPECTIVE RWY AND EXECUTE IAP AND LAND

DURING RADAR VECTORING BEFORE IAF: IN ACCORDANCE WITH
THE RULES OF THE AIR

CHG: MAG VAR

EFPO RNAV STAR RWY 30										
RTE NAV SPEC	SEQ NR	P/T	WPT		MAG	GEO TR	DIST NM	Turn Direction	Constraints	
			ID	Flyover					LVL	Speed
EPAXU 3B RNAV 1	010	IF	EPAXU	-	-	-	-		F100+	
	020	TF	TUXEL	-	050°	058.4°T	14.1		A2200+	K240-
	030	TF	ULVIS	-	028°	035.9°T	5.0		A2200+	

IDNIS 3B RNAV 1	010	IF	IDNIS	-	-	-	-		F100+	
	020	TF	TUXEL	-	340°	348.5°T	12.4	R	A2200+	K240-
	030	TF	ULVIS	-	028°	035.9°T	5.0		A2200+	

OSDIL 4B RNAV 1	010	IF	OSDIL	-	-	-	-		F100+	
	020	TF	VESAP	-	177°	185.9°T	11.6	L		
	030	TF	PIBIR	-	117°	125.9°T	9.8	R	A2200+	K240-
	040	TF	ULVIS	-	208°	216.1°T	5.0		A2200+	

ROGTU 3B RNAV 1	010	IF	ROGTU	-	-	-	-		F100+	
	020	TF	RUBOP	-	097°	105.8°T	22.4			
	030	TF	TUXEL	-	117°	125.7°T	9.8	L	A2200+	K240-
	040	TF	ULVIS	-	028°	035.9°T	5.0		A2200+	

XORMU 3B RNAV 1	010	IF	XORMU	-	-	-	-		F100+	
	020	TF	ULVIS	-	269°	277.9°T	16.2		A2200+	

RNAV Holdings								
ID	INBD TR	INBD MAG	Turn Direction	Speed	MNM HLDG LVL	TIME	DIST NM	
ULVIS	035.9°T	028°	Right	K230-	A2200	1 MIN	-	

WPT COORD
SEE PAGE EFPO AD 2.15 - 1