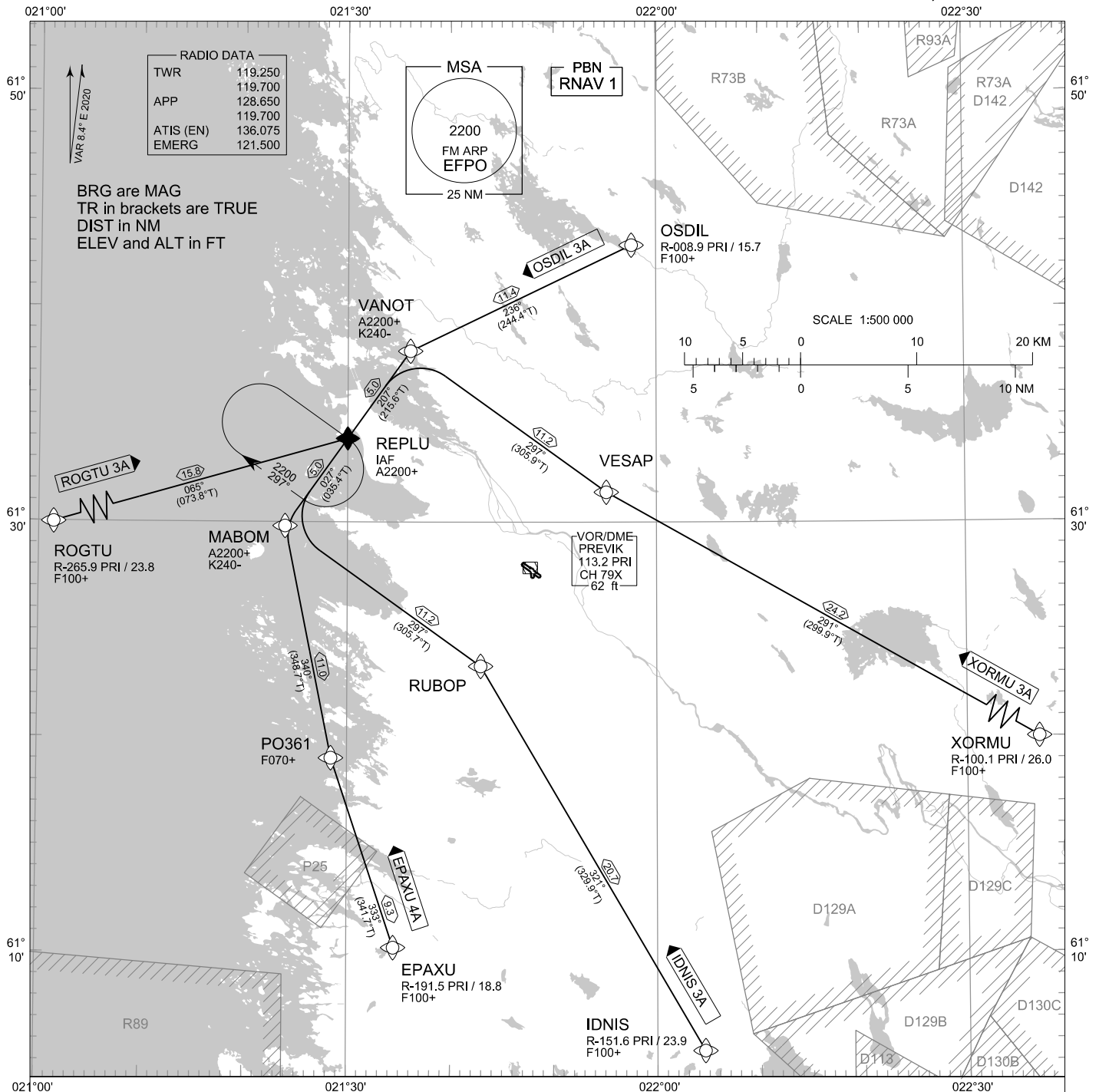


STANDARD ARRIVAL CHART
INSTRUMENT (STAR) - ICAO

TRANSITION ALT
5000

RNAV^(GNSS) STAR RWY 12
PORI AERODROME
PORI, FINLAND



RNAV STAR RWY 12

EPAXU 4A IDNIS 3A OSDIL 3A ROGTU 3A XORMU 3A

AREA MNM ALT: SEE AMA INDEX, AIP ENR 6.1 - 3

CHG: MAG VAR

- DME/DME OPS: NOT SUPPORTED
- ROUTES: RNAV PROC CODING ON THE VERSO OF THE CHART
ATC WILL GIVE DESCENT CLEARANCES
- WPT CONSTRAINTS: ALT / FL / SPEED CONSTRAINTS MUST ALWAYS BE FOLLOWED AS
PUBLISHED UNLESS EXPLICITLY CANCELLED BY ATC
- CD OPS: BY ATC CLR IF TFC PERMITS. PLAN CD PATH ACCORDING TO STAR
- NOISE ABATEMENT: AVOID OVERFLYING THE CITY OF PORI BELOW 2000
- RCF: SELECT TRANSPONDER CODE 7600
- RNAV STAR HAS BEEN GIVEN AND ACKNOWLEDGED: FOLLOW THE
STAR TO THE RESPECTIVE RWY AND EXECUTE IAP AND LAND
- DURING RADAR VECTURING BEFORE IAF: IN ACCORDANCE WITH
THE RULES OF THE AIR

EFPO RNAV STAR RWY 12										
RTE NAV SPEC	SEQ NR	P/T	WPT		MAG	GEO TR	DIST NM	Turn Direction	Constraints	
			ID	Flyover					LVL	Speed
EPAXU 4A RNAV 1	010	IF	EPAXU	-	-	-	-		F100+	
	020	TF	PO361	-	333°	341.7°T	9.3		F070+	
	030	TF	MABOM	-	340°	348.7°T	11.0	R	A2200+	K240-
	040	TF	REPLU	-	027°	035.4°T	5.0		A2200+	

IDNIS 3A RNAV 1	010	IF	IDNIS	-	-	-	-		F100+	
	020	TF	RUBOP	-	321°	329.9°T	20.7			
	030	TF	MABOM	-	297°	305.7°T	11.2	R	A2200+	K240-
	040	TF	REPLU	-	027°	035.4°T	5.0		A2200+	

OSDIL 3A RNAV 1	010	IF	OSDIL	-	-	-	-		F100+	
	020	TF	VANOT	-	236°	244.4°T	11.4	L	A2200+	K240-
	030	TF	REPLU	-	207°	215.6°T	5.0		A2200+	

ROGTU 3A RNAV 1	010	IF	ROGTU	-	-	-	-		F100+	
	020	TF	REPLU	-	065°	073.8°T	15.8		A2200+	

XORMU 3A RNAV 1	010	IF	XORMU	-	-	-	-		F100+	
	020	TF	VESAP	-	291°	299.9°T	24.2			
	030	TF	VANOT	-	297°	305.9°T	11.2	L	A2200+	K240-
	040	TF	REPLU	-	207°	215.6°T	5.0		A2200+	

RNAV Holdings									
ID	INBD TR	INBD MAG	Turn Direction	Speed	MNM HLDG LVL	TIME	DIST NM		
REPLU	125.5°T	117°	Right	K230-	A2200	1 MIN	-		

WPT COORD
SEE PAGE EFPO AD 2.15 - 1