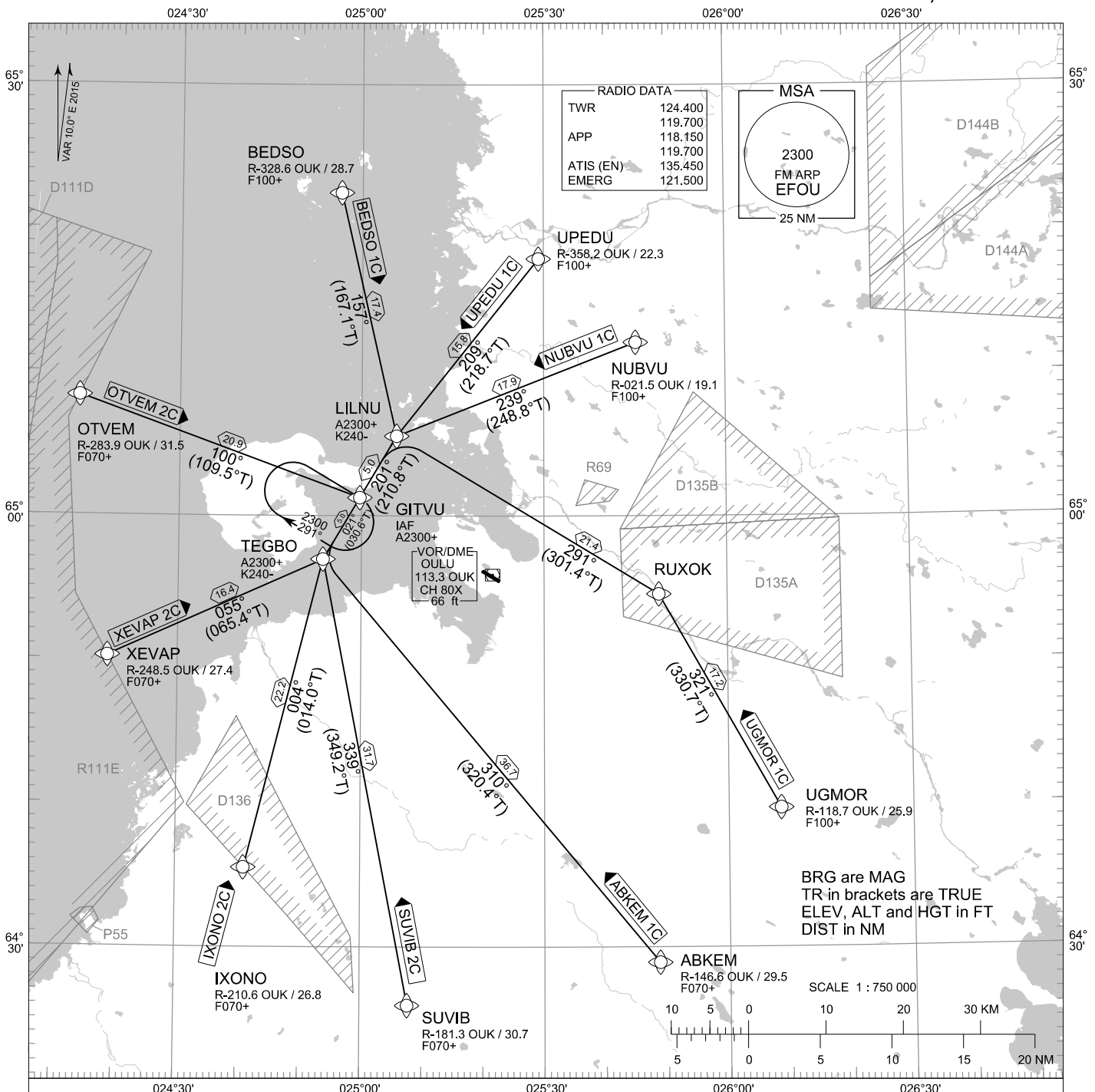


STANDARD ARRIVAL CHART
INSTRUMENT (STAR) - ICAO

TRANSITION ALT
5000

RNAV (GNSS) STAR RWY 12
OULU AERODROME
OULU, FINLAND



CHG: ADDN D111D, R111E

RNAV STAR RWY 12

ABKEM 1C BEDSO 1C IXONO 2C NUBVU 1C OTVEM 2C SUVIB 2C UGMOR 1C UPEDU 1C XEVAP 2C

- NAV SPECIFICATION: RNAV 1 OR P-RNAV APPROVAL REQUIRED. OTHERWISE ADVISE ATC
- DME/DME OPS: NOT SUPPORTED
- ROUTES: RNAV PROC CODING ON THE VERSO OF THE CHART
ATC WILL GIVE DESCENT CLEARANCES
- WPT CONSTRAINTS: ALT / FL / SPEED CONSTRAINTS MUST ALWAYS BE FOLLOWED AS
PUBLISHED UNLESS EXPLICITLY CANCELLED BY ATC
- CD OPS: BY ATC CLR IF TFC PERMITS. PLAN CD PATH ACCORDING TO STAR
- NOISE ABATEMENT: AVOID OVERFLYING THE CITY OF OULU BELOW 2000
- RCF: SELECT TRANSPONDER CODE 7600
- RNAV STAR HAS BEEN GIVEN AND ACKNOWLEDGED: FOLLOW THE
STAR TO THE RESPECTIVE RWY AND EXECUTE IAP AND LAND
- DURING RADAR VECTORING BEFORE IAF: IN ACCORDANCE WITH
THE RULES OF THE AIR
- AREA MNM ALT: SEE AMA INDEX, AIP ENR 6.1-3

EFOU RNAV STAR RWY 12										
RTE NAV SPEC	SEQ NR	P/T	WPT		MAG	GEO TR	DIST NM	Turn Direction	Constraints	
			ID	Flyover					LVL	Speed
ABKEM 1C RNAV 1 or P-RNAV	010	IF	ABKEM	-	-	-	-		F070+	
	020	TF	TEGBO	-	310°	320.4°T	36.7	R	A2300+	K240-
	030	TF	GITVU	-	021°	030.6°T	5.0		A2300+	
BEDSO 1C RNAV 1 or P-RNAV	010	IF	BEDSO	-	-	-	-		F100+	
	020	TF	LILNU	-	157°	167.1°T	17.4	R	A2300+	K240-
	030	TF	GITVU	-	201°	210.8°T	5.0		A2300+	
IXONO 2C RNAV 1 or P-RNAV	010	IF	IXONO	-	-	-	-		F070+	
	020	TF	TEGBO	-	004°	014.0°T	22.2		A2300+	K240-
	030	TF	GITVU	-	021°	030.6°T	5.0		A2300+	
NUBVU 1C RNAV 1 or P-RNAV	010	IF	NUBVU	-	-	-	-		F100+	
	020	TF	LILNU	-	239°	248.8°T	17.9	L	A2300+	K240-
	030	TF	GITVU	-	201°	210.8°T	5.0		A2300+	
OTVEM 2C RNAV 1 or P-RNAV	010	IF	OTVEM	-	-	-	-		F070+	
	020	TF	GITVU	-	100°	109.5°T	20.9		A2300+	
	-									
SUVIB 2C RNAV 1 or P-RNAV	010	IF	SUVIB	-	-	-	-		F070+	
	020	TF	TEGBO	-	339°	349.2°T	31.7	R	A2300+	K240-
	030	TF	GITVU	-	021°	030.6°T	5.0		A2300+	
UGMOR 1C RNAV 1 or P-RNAV	010	IF	UGMOR	-	-	-	-		F100+	
	020	TF	RUXOK	-	321°	330.7°T	17.2	L		
	030	TF	LILNU	-	291°	301.4°T	21.4	L	A2300+	K240-
	040	TF	GITVU	-	201°	210.8°T	5.0		A2300+	
UPEDU 1C RNAV 1 or P-RNAV	010	IF	UPEDU	-	-	-	-		F100+	
	020	TF	LILNU	-	209°	218.7°T	15.8		A2300+	K240-
	030	TF	GITVU	-	201°	210.8°T	5.0		A2300+	
XEVA 2C RNAV 1 or P-RNAV	010	IF	XEVA	-	-	-	-		F070+	
	020	TF	TEGBO	-	055°	065.4°T	16.4	L	A2300+	K240-
	030	TF	GITVU	-	021°	030.6°T	5.0		A2300+	

RNAV Holdings							
ID	INBD TR	INBD MAG	Turn Direction	MAX IAS	MNM HLDG LVL	TIME	DIST NM
GITVU	121.0°T	111°	Right	230 KT	A2300	1 MIN	-

WPT COORD
SEE PAGE EFOU AD 2.15 - 1