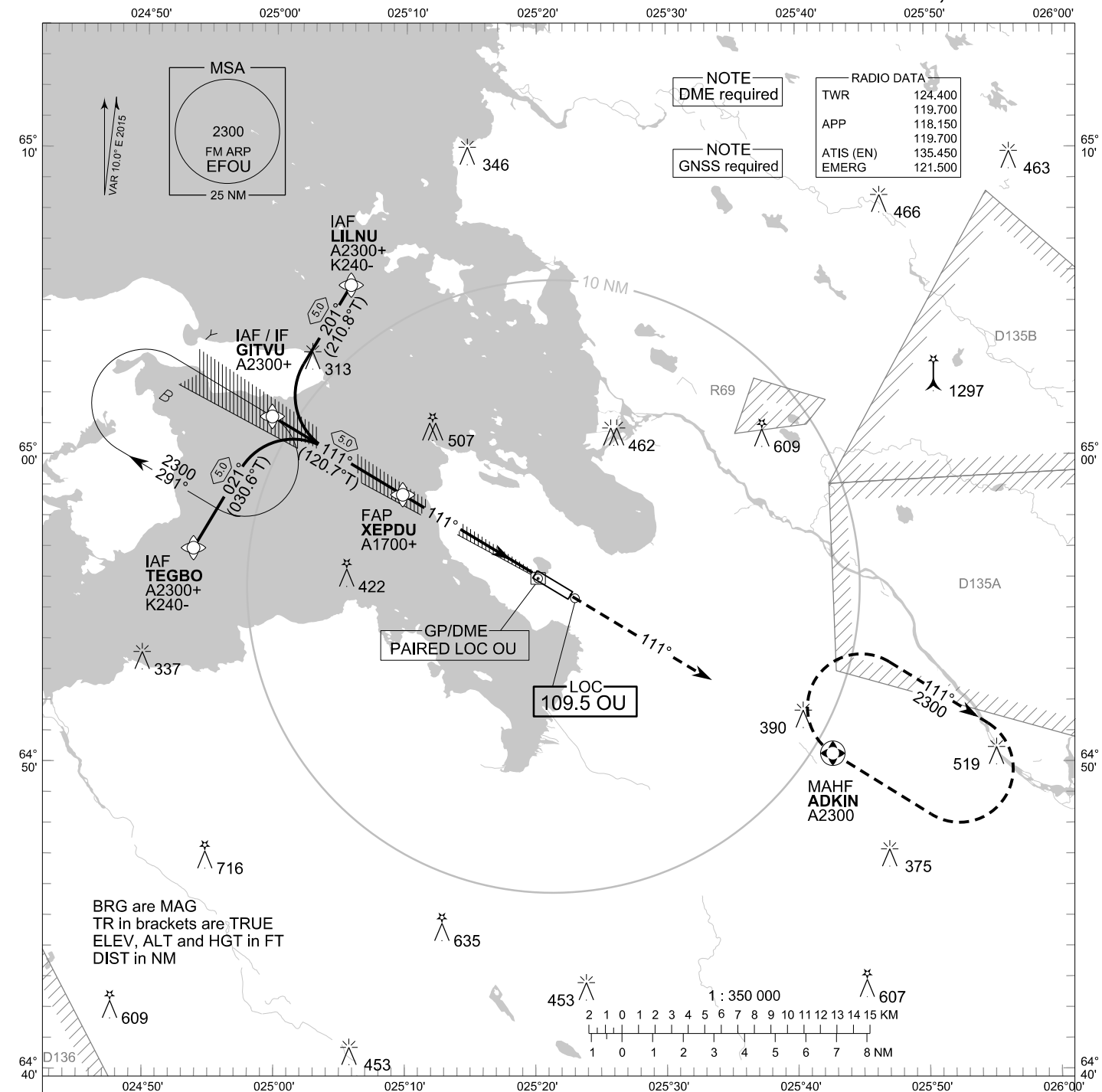


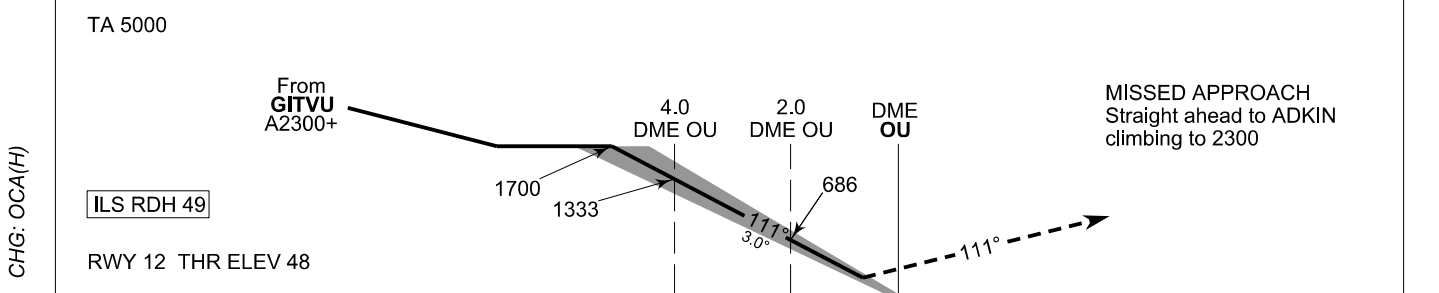
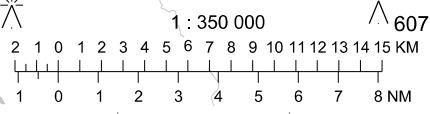
**INSTRUMENT
APPROACH CHART - ICAO**

ELEV 48 FT
HEIGHTS RELATED TO
THR RWY 12 ELEV 48 FT

**ILS Z RWY 12 CAT II
OULU AERODROME
OULU, FINLAND**



BRG are MAG
TR in brackets are TRUE
ELEV, ALT and HGT in FT
DIST in NM



OCA (H)	A	B	C	D
ILS CAT II	97 (50)	108 (61)	123 (76)	141(94)

EFOU ILS Z RWY 12 CAT II										
PROC ID NAV SPEC	SEQ NR	P/T	WPT			MAG GEO TR	DIST NM	Turn Direction	Constraints	
			ID	Type	Flyover				LVL	Speed
I12 LILNU RNP APCH	005	IF	LILNU	IAF	-	201°	5.0	L	A2300+	K240-
	010	TF	GITVU	IF	-	210.8°T			A2300+	
	020	TF	XEPDU	FAP	-	111° 120.7°T	5.0		A1700+	
	-	-	-	-	-					
	040	CA	-	-	-	111° 121.0°T	-		A700+	
	050	DF	ADKIN	MAHF	Y	-	-		A2300	

EFOU ILS Z RWY 12 CAT II										
PROC ID NAV SPEC	SEQ NR	P/T	WPT			MAG GEO TR	DIST NM	Turn Direction	Constraints	
			ID	Type	Flyover				LVL	Speed
I12 GITVU RNP APCH	010	IF	GITVU	IAF/IF	-	111°	5.0		A2300+	
	020	TF	XEPDU	FAP	-	120.7°T			A1700+	
	-	-	-	-	-					
	040	CA	-	-	-	111° 121.0°T	-		A700+	
	050	DF	ADKIN	MAHF	Y	-	-		A2300	

EFOU ILS Z RWY 12 CAT II										
PROC ID NAV SPEC	SEQ NR	P/T	WPT			MAG GEO TR	DIST NM	Turn Direction	Constraints	
			ID	Type	Flyover				LVL	Speed
I12 TEGBO RNP APCH	005	IF	TEGBO	IAF	-	021°	5.0	R	A2300+	K240-
	010	TF	GITVU	IF	-	030.6°T			A2300+	
	020	TF	XEPDU	FAP	-	111° 120.7°T	5.0		A1700+	
	-	-	-	-	-					
	040	CA	-	-	-	111° 121.0°T	-		A700+	
	050	DF	ADKIN	MAHF	Y	-	-		A2300	

RNAV Holdings							
ID	INBD TR	INBD MAG	Turn Direction	MAX IAS	MNM HLDG LVL	TIME	DIST NM
GITVU	121.0°T	111°	Right	230 KT	A2300	1 MIN	-
ADKIN	301.0°T	291°	Right	230 KT	A2300	1 MIN	-

WPT COORD
SEE PAGE EFOU AD 2.15 - 1

FINAL APPROACH PARAMETERS			
LOC Gradient	ILS		RDH
	CAT	GPA	
-	II	3.00°	49 FT