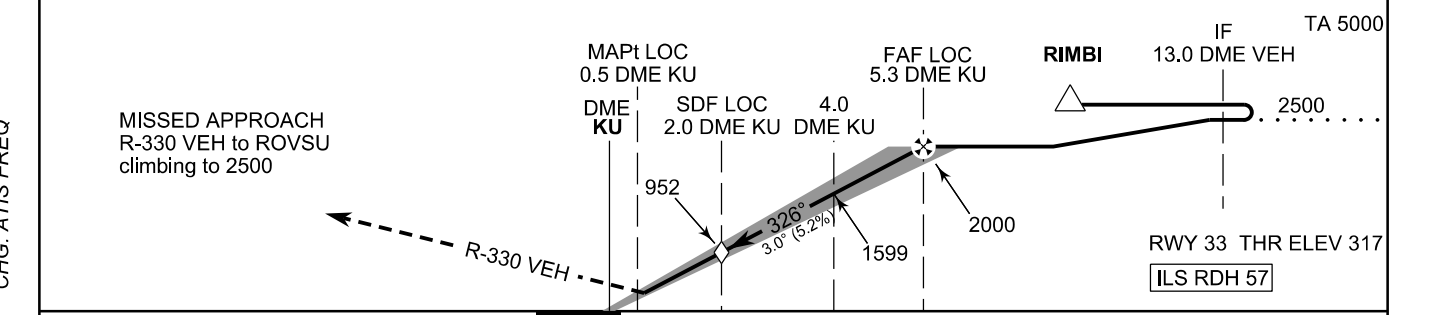
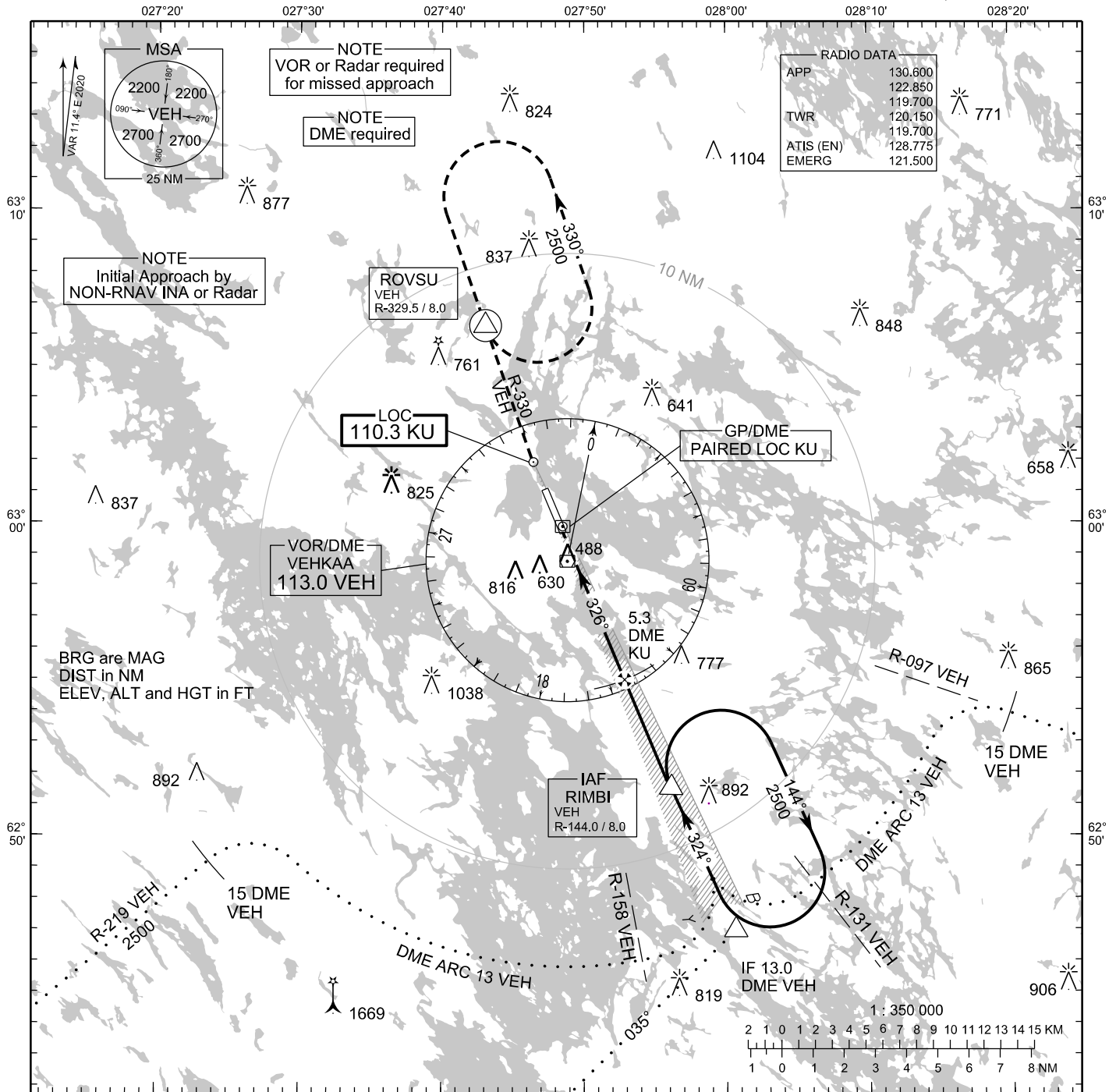


**INSTRUMENT
APPROACH CHART - ICAO**

ELEV 324 FT
HEIGHTS RELATED TO
THR RWY 33 ELEV 317 FT

**ILS Y or LOC Y RWY 33
KUOPIO AERODROME
KUOPIO, FINLAND**



NM	OCA (H)				kt						
	A	B	C	D	90	100	120	140	160		
ILS CAT I	469 (153)	479 (163)	491 (175)	503 (187)	min:sec	3:12	2:53	2:24	2:04	1:48	
LOC	730 (410)				Rate of descent	ft/mIn	480	530	640	740	850
LOC WO SDF	950 (640)				Timing not authorized for defining the MAPt						
Circling	930 (610)	1120 (790)	1210 (890)	1220 (900)							