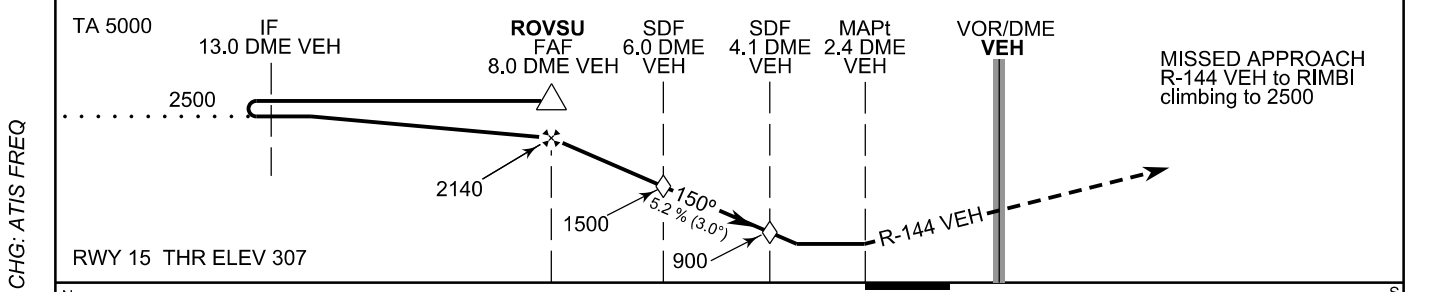
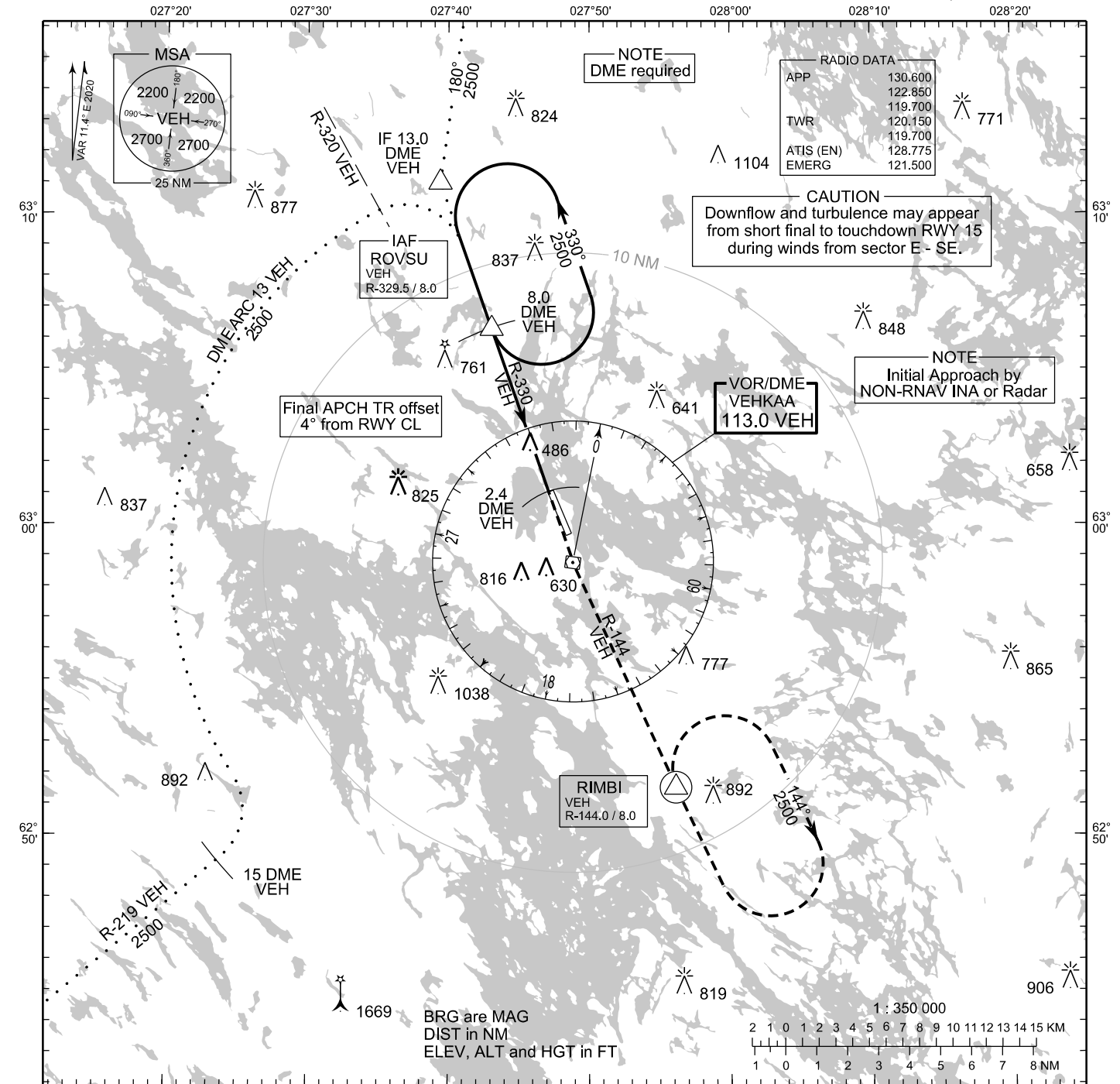


**INSTRUMENT  
APPROACH CHART - ICAO**

ELEV 324 FT  
HEIGHTS RELATED TO  
THR RWY 15 ELEV 307 FT

**VOR RWY 15  
KUOPIO AERODROME  
KUOPIO, FINLAND**



NM	10	5	0	5	NM
OCA (H)	A	B	C	D	
VOR		740 (430)			
VOR WO SDF 4.1 VEH		900 (590)			
VOR WO SDF 6.0 VEH		1500 (1200)			
Circling	930 (610)	1120 (790)	1210 (890)	1220 (900)	

Final Approach DIST	7.0 DME	6.0 DME	5.0 DME	4.0 DME		
Altitude (Height)	1820 (1510)	1500 (1200)	1180 (880)	870 (560)		
	kt	90	100	120	140	160
FAF - MAPt 5.6 NM	min:sec	3:44	3:22	2:48	2:24	2:06
Rate of descent	ft/min	480	530	640	740	850

Timing not authorized for defining the MAPt