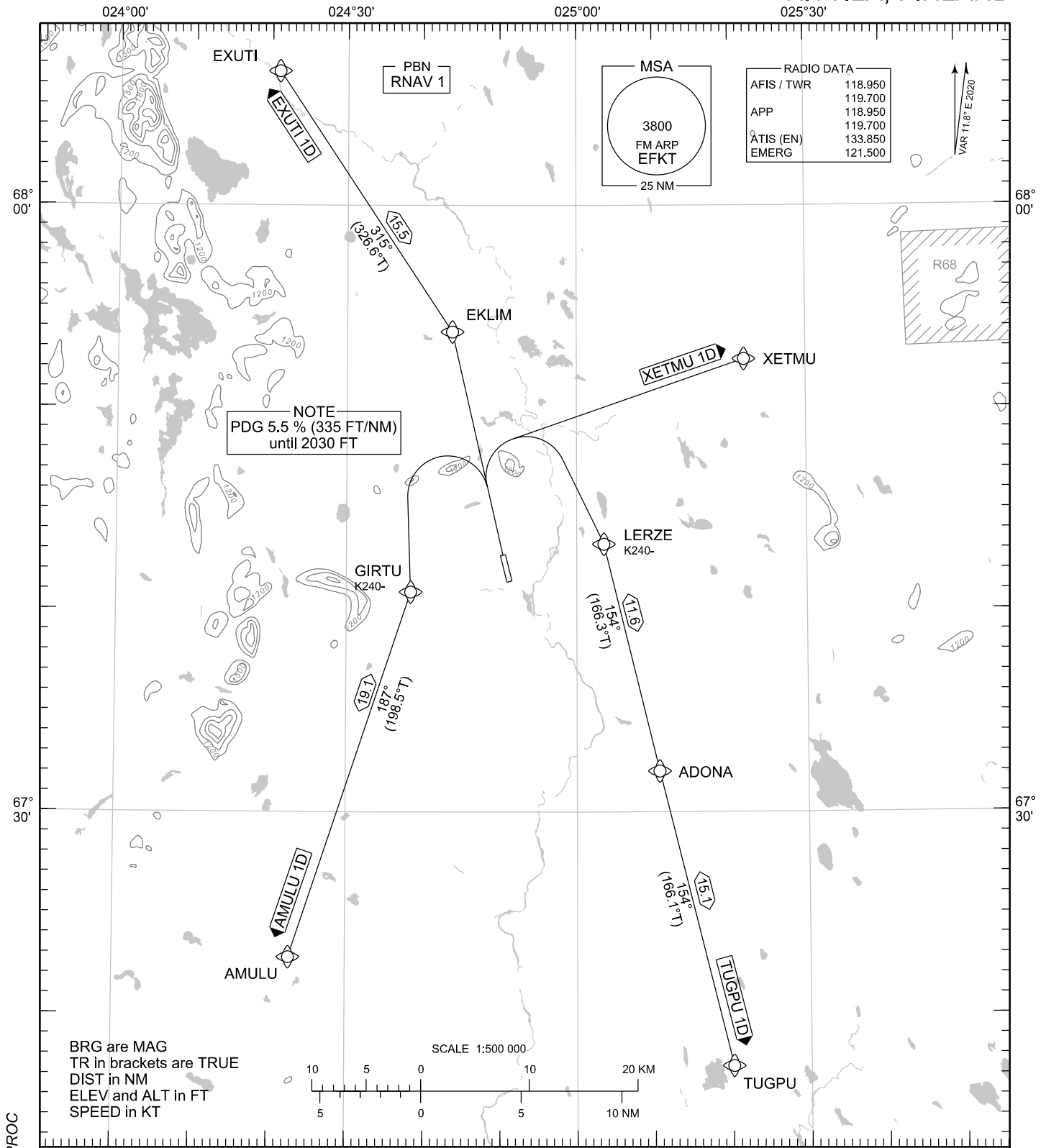


STANDARD DEPARTURE CHART  
INSTRUMENT (SID) - ICAO

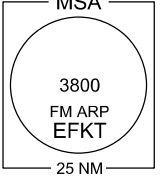
TRANSITION ALT  
5000

RNAV (GNSS) SID RWY 34  
KITILÄ AERODROME  
KITILÄ, FINLAND

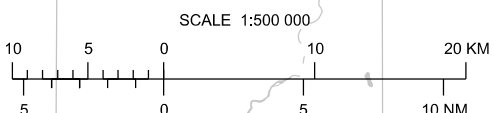


NOTE  
PDG 5.5 % (335 FT/NM)  
until 2030 FT

RADIO DATA	
AFIS / TWR	118.950
	119.700
APP	118.950
	119.700
ÄTIS (EN)	133.850
EMERG	121.500



BRG are MAG  
TR in brackets are TRUE  
DIST in NM  
ELEV and ALT in FT  
SPEED in KT



CHG: new PROC

**RNAV SID RWY 34**  
AMULU 1D EXUTI 1D TUGPU 1D XETMU 1D

- DME/DME OPS: NOT SUPPORTED
- ROUTES: RNAV PROC CODING ON THE VERSO OF THE CHART
- SQUAWK: WHEN LINING UP SQUAWK THE ASSIGNED CODE
- INITIAL CLIMB: MNM TURNING ALTITUDE ACCORDING TO RTE CODING  
PDG 5.5 % (335 FT/NM) UNTIL 2030 FT
- NOISE ABATEMENT: AFTER TAKE-OFF CLIMB AS RAPIDLY AS PRACTICABLE TO AT LEAST 2000 FT ABOVE AD ELEV  
PUBLISHED SID ROUTES ARE ALSO MINIMUM NOISE ROUTINGS
- AREA MNM ALT: SEE AMA INDEX AIP ENR 6.1 - 3

EFKT RNAV SID RWY 34										
RTE NAV SPEC	SEQ NR	P/T	WPT		MAG	GEO TR	DIST NM	Turn Direction	Constraints	
			ID	Flyover					LVL	Speed
AMULU 1D RNAV 1	010	CA	-	-	337°	348.8°T	-	L	A2090+	K220-
	020	DF	GIRTU	-	-	-	-			K240-
	030	TF	AMULU	-	187°	198.5°T	19.1			
EXUTI 1D RNAV 1	010	CA	-	-	337°	348.8°T	-		A2090+	
	020	DF	EKLIM	-	-	-	-			
	030	TF	EXUTI	-	315°	326.6°T	15.5			
TUGPU 1D RNAV 1	010	CA	-	-	337°	348.8°T	-	R	A2090+	K220-
	020	DF	LERZE	-	-	-	-			K240-
	030	TF	ADONA	-	154°	166.3°T	11.6			
	040	TF	TUGPU	-	154°	166.1°T	15.1			
XETMU 1D RNAV 1	010	CA	-	-	337°	348.8°T	-		A2090+	K220-
	020	DF	XETMU	-	-	-	-			

WPT COORD	
SEE PAGE EFKT AD 2.15 - 1	