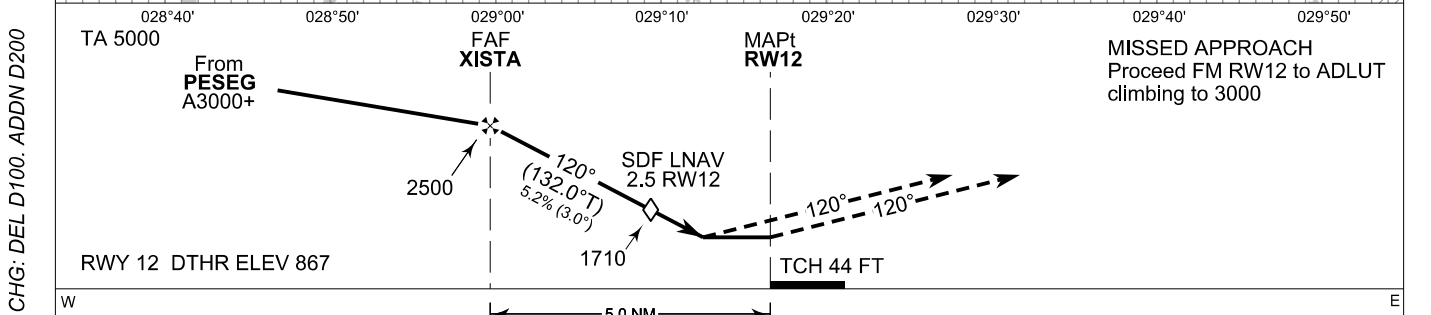
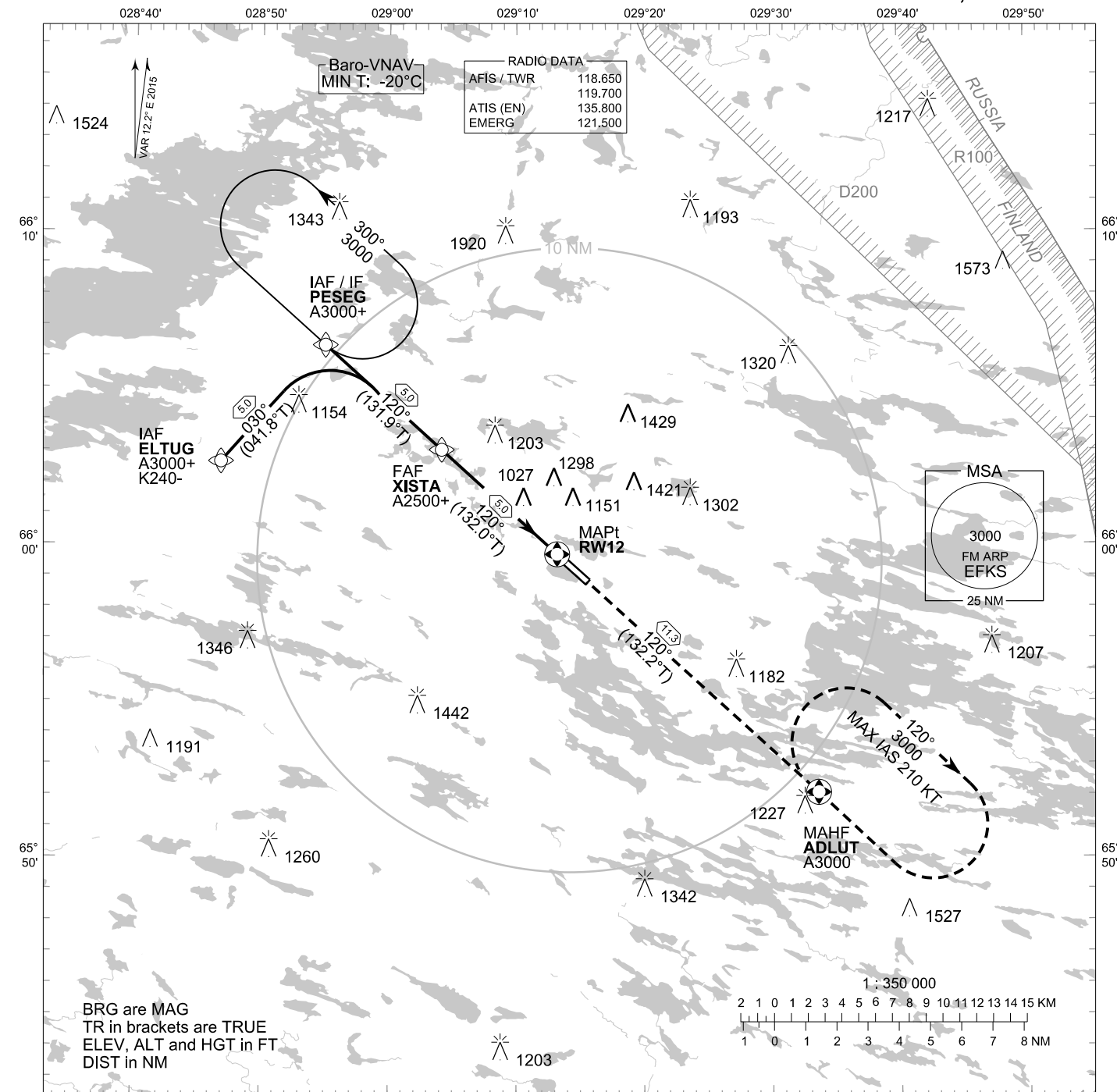


**INSTRUMENT
APPROACH CHART - ICAO**

ELEV 868 FT
HEIGHTS RELATED TO
AERODROME ELEV

RNAV (GNSS) RWY 12
KUUSAMO AERODROME
KUUSAMO, FINLAND



OCA (H)	A	B	C	D
LNAV	1280 (410)			
LNAV/VNAV	1200 (340)			
Circling	1450 (580)	1600 (730)	1820 (950)	1830 (960)

DIST FM THR	5.0 NM	4.0 NM	3.0 NM	2.0 NM		
Altitude (Height)	2500 (1640)	2180 (1320)	1870 (1000)	1550 (680)		
	kt	90	100	120	140	160
FAF - MAPt 5.0 NM	min:sec	3:20	3:00	2:30	2:08	1:52
Rate of descent	ft/min	480	530	640	740	850

Timing not authorized for defining the MAPt

EFKS RNAV (GNSS) RWY 12										
PROC ID NAV SPEC	SEQ NR	P/T	WPT			MAG GEO TR	DIST NM	Turn Direction	Constraints	
			ID	Type	Flyover				LVL	Speed
R12 PESEG RNP APCH	010	IF	PESEG	IAF/IF	-	120°	5.0		A3000+	
	020	TF	XISTA	FAF	-	131.9°T			A2500+	
	030	TF	RW12	MAPt	Y	120°	5.0			
	040	TF	ADLUT	MAHF	Y	132.0°T	11.3		A3000	

EFKS RNAV (GNSS) RWY 12										
PROC ID NAV SPEC	SEQ NR	P/T	WPT			MAG GEO TR	DIST NM	Turn Direction	Constraints	
			ID	Type	Flyover				LVL	Speed
R12 ELTUG RNP APCH	005	IF	ELTUG	IAF	-	030°	5.0	R	A3000+	K240-
	010	TF	PESEG	IF	-	041.8°T			A3000+	
	020	TF	XISTA	FAF	-	120°	5.0	A2500+		
	030	TF	RW12	MAPt	Y	131.9°T	5.0			
	040	TF	ADLUT	MAHF	Y	120°	11.3		A3000	

RNAV Holdings							
ID	INBD TR	INBD MAG	Turn Direction	MAX IAS	MNM HLDG LVL	TIME	DIST NM
PESEG	132.2°T	120°	Left	230 KT	A3000	1 MIN	-
ADLUT	312.2°T	300°	Right	210 KT	A3000	1 MIN	-

WPT COORD
SEE PAGE EFKS AD 2.15 - 1

FINAL APPROACH PARAMETERS			
LNAV Gradient	Baro-VNAV		TCH
	VPA	MNM T	
5.24 % (3.00°)	3.00°	-20°C	44 FT