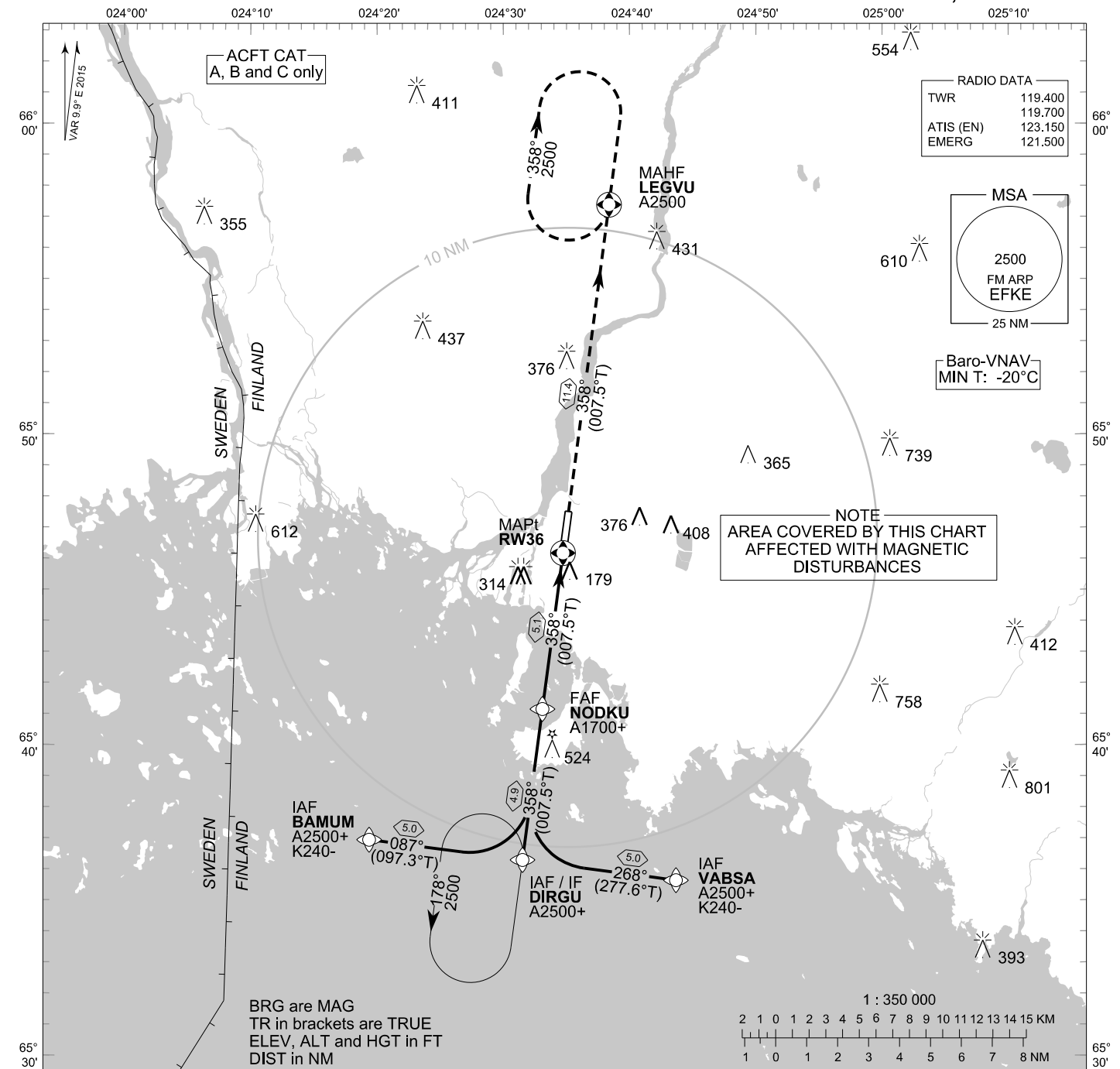


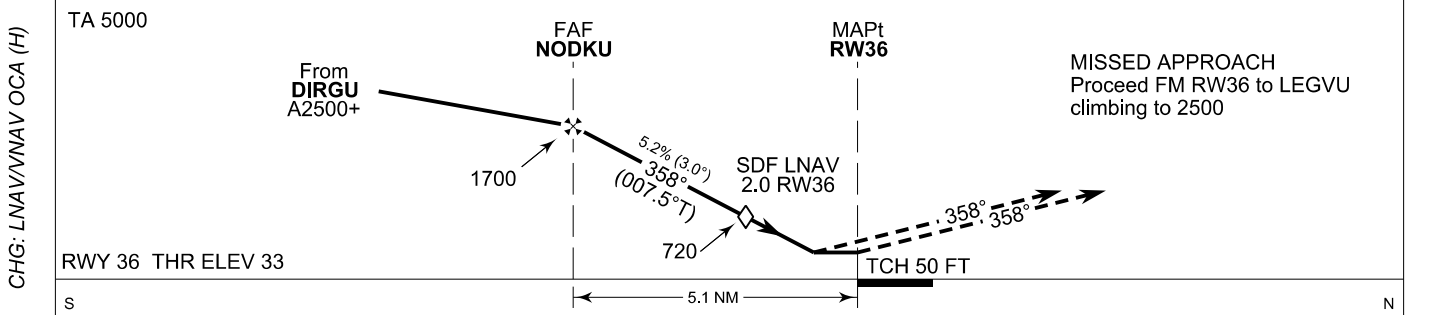
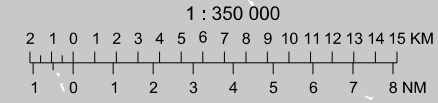
**INSTRUMENT
APPROACH CHART - ICAO**

ELEV 62 FT
HEIGHTS RELATED TO
THR RWY 36 ELEV 33 FT

RNAV (GNSS) RWY 36
KEMI-TORNIO AERODROME
KEMI, FINLAND



BRG are MAG
TR in brackets are TRUE
ELEV, ALT and HGT in FT
DIST in NM



CHG: LNAV/VNAV OCA (H)

OCA (H)	A	B	C
LNAV	430 (400)		
LNAV/VNAV	296 (263)	308 (275)	316 (283)
Circling	580 (520)	680 (610)	810 (740)

DIST FM THR	5.0 NM		4.0 NM		3.0 NM		2.0 NM	
	Altitude (Height)	kt	Altitude (Height)	kt	Altitude (Height)	kt	Altitude (Height)	kt
	1670 (1640)	90	1360 (1320)	100	1040 (1000)	120	720 (690)	140
FAF - MAPt 5.1 NM	min:sec	3:23	3:03	2:32	2:11	1:54		
Rate of descent	ft/min	480	530	640	740	850		

Timing not authorized for defining the MAPt

EFKE RNAV (GNSS) RWY 36										
PROC ID NAV SPEC	SEQ NR	P/T	WPT			MAG GEO TR	DIST NM	Turn Direction	Constraints	
			ID	Type	Flyover				LVL	Speed
R36 BAMUM RNP APCH	005	IF	BAMUM	IAF	-	087° 097.3°T	5.0	L	A2500+	K240-
	010	TF	DIRGU	IF	-	358° 007.5°T			4.9	A2500+
	020	TF	NODKU	FAF	-	358° 007.5°T	5.1		A1700+	
	030	TF	RW36	MAPt	Y	358° 007.5°T		11.4		
	040	TF	LEGVU	MAHF	Y	007.5°T			A2500	

EFKE RNAV (GNSS) RWY 36										
PROC ID NAV SPEC	SEQ NR	P/T	WPT			MAG GEO TR	DIST NM	Turn Direction	Constraints	
			ID	Type	Flyover				LVL	Speed
R36 DIRGU RNP APCH	010	IF	DIRGU	IAF/IF	-	358° 007.5°T	4.9		A2500+	
	020	TF	NODKU	FAF	-	358° 007.5°T		5.1		A1700+
	030	TF	RW36	MAPt	Y	358° 007.5°T	11.4			
	040	TF	LEGVU	MAHF	Y	007.5°T				A2500

EFKE RNAV (GNSS) RWY 36										
PROC ID NAV SPEC	SEQ NR	P/T	WPT			MAG GEO TR	DIST NM	Turn Direction	Constraints	
			ID	Type	Flyover				LVL	Speed
R36 VABSA RNP APCH	005	IF	VABSA	IAF	-	268° 277.6°T	5.0	R	A2500+	K240-
	010	TF	DIRGU	IF	-	358° 007.5°T			4.9	A2500+
	020	TF	NODKU	FAF	-	358° 007.5°T	5.1		A1700+	
	030	TF	RW36	MAPt	Y	358° 007.5°T		11.4		
	040	TF	LEGVU	MAHF	Y	007.5°T			A2500	

RNAV Holdings							
ID	INBD TR	INBD MAG	Turn Direction	MAX IAS	MNM HLDG LVL	TIME	DIST NM
DIRGU	007.5°T	358°	Left	230 KT	A2500	1 MIN	-
LEGVU	187.5°T	178°	Right	230 KT	A2500	1 MIN	-

WPT COORD
SEE PAGE EFKE AD 2.15 - 1

FINAL APPROACH PARAMETERS			
LNAV Gradient	Baro-VNAV		TCH
	VPA	MNM T	
5.24 % (3.00°)	3.00°	-20°C	50 FT