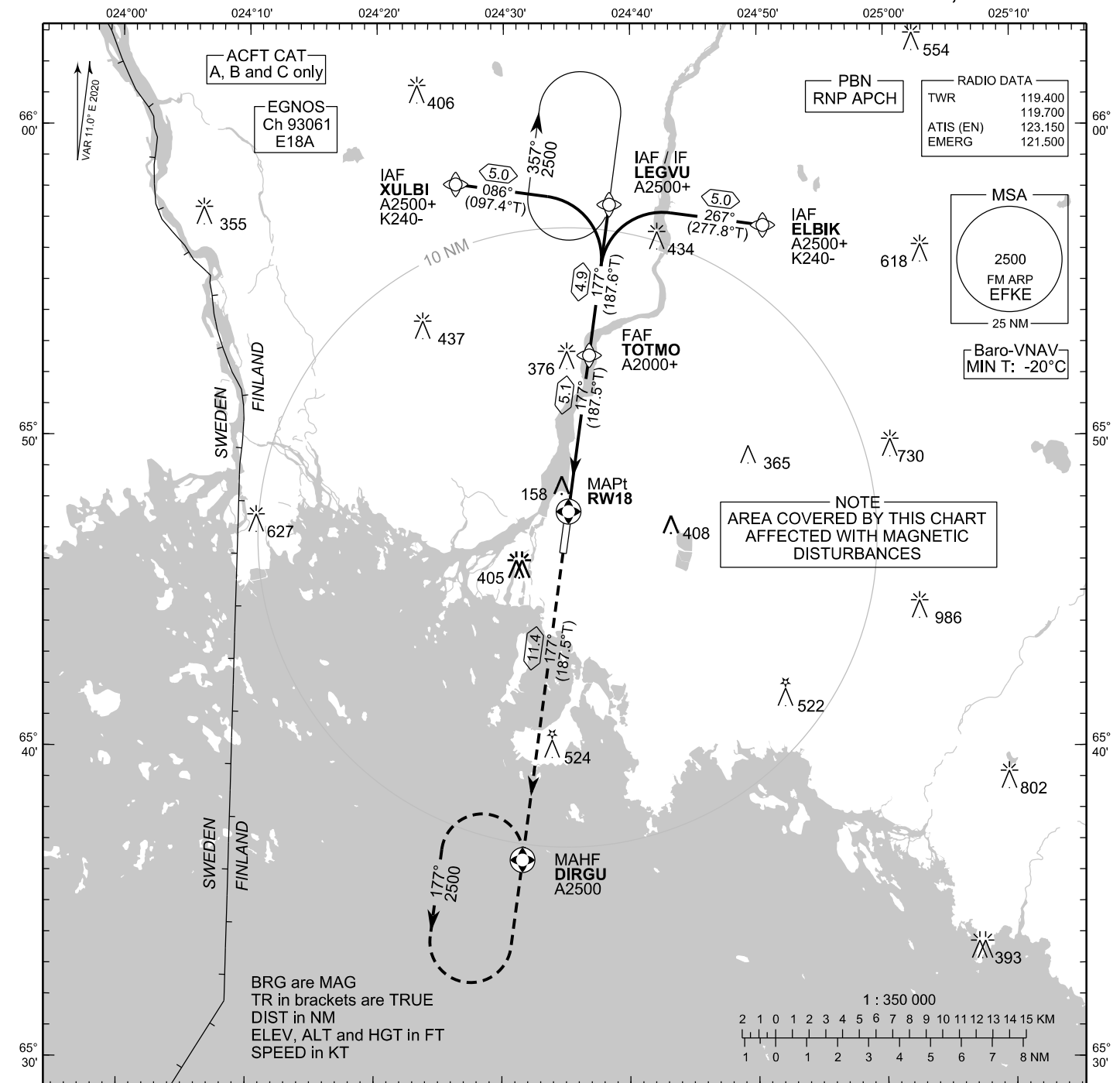


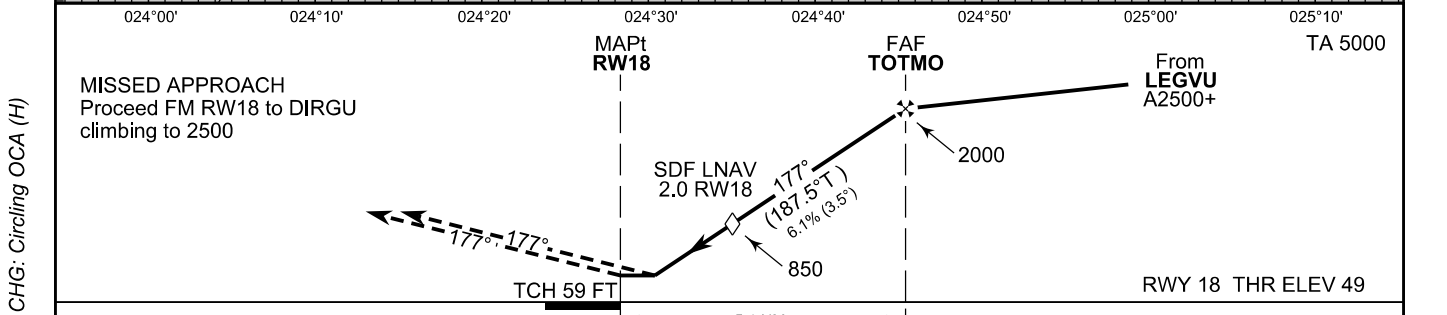
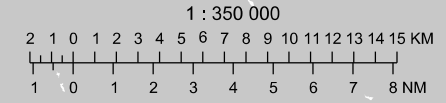
**INSTRUMENT
APPROACH CHART - ICAO**

ELEV 62 FT
HEIGHTS RELATED TO
THR RWY 18 ELEV 49 FT

**RNP RWY 18
KEMI-TORNIO AERODROME
KEMI, FINLAND**



BRG are MAG
TR in brackets are TRUE
DIST in NM
ELEV, ALT and HGT in FT
SPEED in KT



MISSED APPROACH
Proceed FM RW18 to DIRGU
climbing to 2500

OCA (H)	A	B	C
LPV	279 (230)	295 (246)	306 (257)
LNAV/VNAV	305 (256)	321 (272)	332 (283)
LNAV	410 (370)		
Circling	710 (640)	710 (640)	810 (740)

DIST FM THR	1.0 NM	2.0 NM	3.0 NM	4.0 NM	5.0 NM	
Altitude (Height)	480 (430)	850 (800)	1220 (1170)	1590 (1540)	1960 (1920)	
	kt	90	100	120	140	160
FAF - MAPt 5.1 NM	min:sec	3:24	3:03	2:33	2:11	1:55
Rate of descent	ft/min	560	620	740	870	990

Timing not authorized for defining the MAPt

EFKE RNP RWY 18										
PROC ID NAV SPEC	SEQ NR	P/T	WPT			MAG	GEO TR	DIST NM	Constraints	
			ID	Type	Flyover				LVL	Speed
H18 ELBIK RNP APCH	005	IF	ELBIK	IAF	-				A2500+	K240-
	010	TF	LEGVU	IF	-	267°	277.8°T	5.0	A2500+	
	020	TF	TOTMO	FAF	-	177°	187.6°T	4.9	A2000+	
	030	TF	RW18	MAPt	Y	177°	187.5°T	5.1		
	040	TF	DIRGU	MAHF	Y	177°	187.5°T	11.4	A2500	

EFKE RNP RWY 18										
PROC ID NAV SPEC	SEQ NR	P/T	WPT			MAG	GEO TR	DIST NM	Constraints	
			ID	Type	Flyover				LVL	Speed
H18 LEGVU RNP APCH	010	IF	LEGVU	IAF/IF	-				A2500+	
	020	TF	TOTMO	FAF	-	177°	187.6°T	4.9	A2000+	
	030	TF	RW18	MAPt	Y	177°	187.5°T	5.1		
	040	TF	DIRGU	MAHF	Y	177°	187.5°T	11.4	A2500	

EFKE RNP RWY 18										
PROC ID NAV SPEC	SEQ NR	P/T	WPT			MAG	GEO TR	DIST NM	Constraints	
			ID	Type	Flyover				LVL	Speed
H18 XULBI RNP APCH	005	IF	XULBI	IAF	-				A2500+	K240-
	010	TF	LEGVU	IF	-	086°	097.4°T	5.0	A2500+	
	020	TF	TOTMO	FAF	-	177°	187.6°T	4.9	A2000+	
	030	TF	RW18	MAPt	Y	177°	187.5°T	5.1		
	040	TF	DIRGU	MAHF	Y	177°	187.5°T	11.4	A2500	

RNAV Holdings							
ID	INBD TR	INBD MAG	Turn Direction	Speed	MNM HLDG LVL	TIME	DIST NM
LEGVU	187.5°T	177°	Right	K230-	A2500	1 MIN	-
DIRGU	007.5°T	357°	Left	K230-	A2500	1 MIN	-

WPT COORD
SEE PAGE EFKE AD 2.15 - 1

FINAL APPROACH PARAMETERS			
LNAV Gradient	Baro-VNAV		TCH
	VPA	MNM T	
6.11 % (3.50°)	3.50°	-20°C	59 FT

SBAS DATA	
Approach ID	E18A
Service Provider	EGNOS
CRC remainder	ED 72 B9 3D
Channel number	93061
Data Block	SEE EFKE AD 2.15 - 9