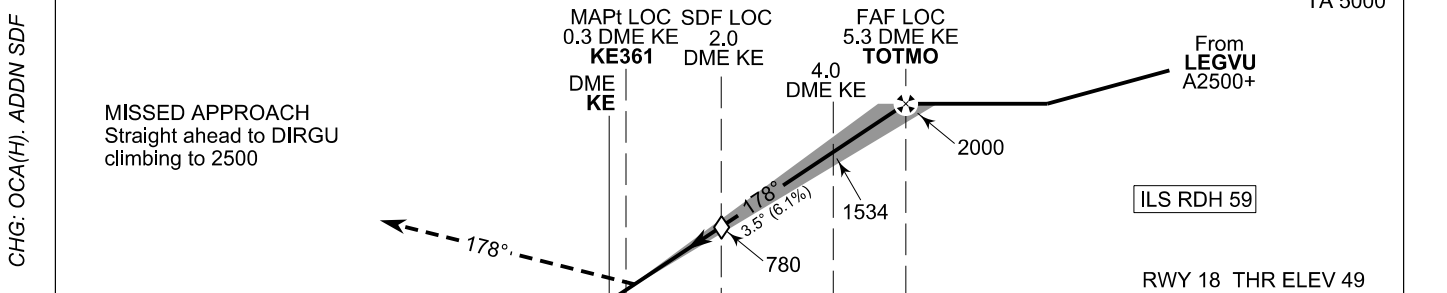
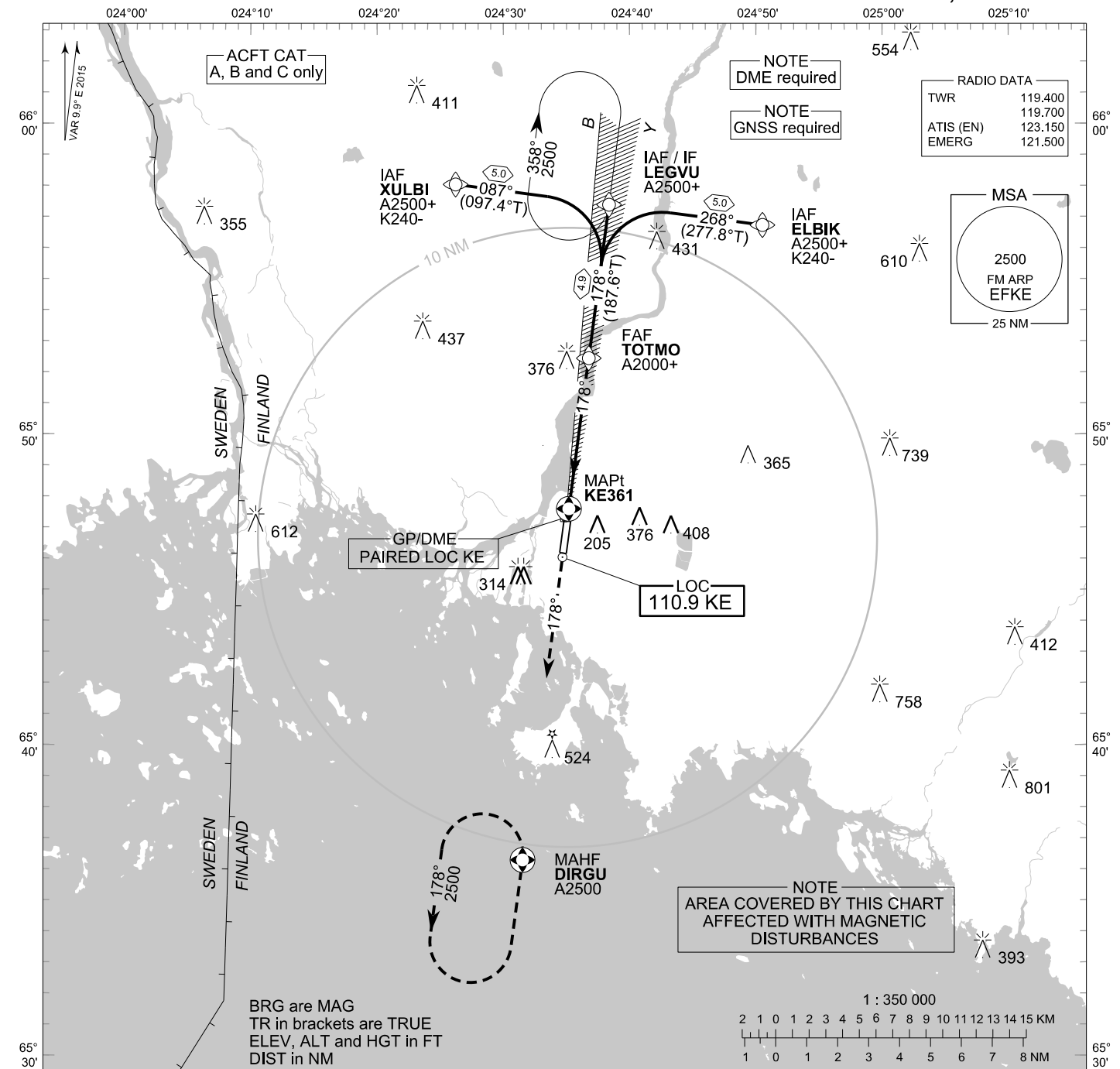


**INSTRUMENT
APPROACH CHART - ICAO**

ELEV 62 FT
HEIGHTS RELATED TO
THR RWY 18 ELEV 49 FT

**ILS Z or LOC Z RWY 18
KEMI-TORNIO AERODROME
KEMI, FINLAND**



10 NM	5	0	5	10	NM
OCA (H)					
ILS CAT I					
LOC					
LOC WO SDF					
Circling					
A	B	C			
209 (160)	217 (168)	226 (177)			
460 (410)					
780 (730)					
580 (520)	680 (610)	810 (740)			

	kt	90	100	120	140	160
FAF - MAPt 5.0 NM	min:sec	3:20	3:00	2:30	2:09	1:52
Rate of descent	ft/min	560	620	740	870	990

Timing not authorized for defining the MAPt

EFKE ILS Z or LOC Z RWY 18										
PROC ID NAV SPEC	SEQ NR	P/T	WPT			MAG GEO TR	DIST NM	Turn Direction	Constraints	
			ID	Type	Flyover				LVL	Speed
I18 ELBIK RNP APCH	005	IF	ELBIK	IAF	-	268° 277.8°T	5.0	L	A2500+	K240-
	010	TF	LEGVU	IF	-	178° 187.6°T	4.9		A2500+	
	020	TF	TOTMO	FAF LOC	-				A2000+	
	030	TF	KE361	MAPt LOC	Y	178° 187.9°T	-			
	040	CA	-	-	-	-	-		A500+	
	050	DF	DIRGU	MAHF	Y				A2500	

EFKE ILS Z or LOC Z RWY 18										
PROC ID NAV SPEC	SEQ NR	P/T	WPT			MAG GEO TR	DIST NM	Turn Direction	Constraints	
			ID	Type	Flyover				LVL	Speed
I18 LEGVU RNP APCH	010	IF	LEGVU	IAF/IF	-	178° 187.6°T	4.9		A2500+	
	020	TF	TOTMO	FAF LOC	-				A2000+	
	030	TF	KE361	MAPt LOC	Y	178° 187.9°T	-			
	040	CA	-	-	-	-	-		A500+	
	050	DF	DIRGU	MAHF	Y				A2500	

EFKE ILS Z or LOC Z RWY 18										
PROC ID NAV SPEC	SEQ NR	P/T	WPT			MAG GEO TR	DIST NM	Turn Direction	Constraints	
			ID	Type	Flyover				LVL	Speed
I18 XULBI RNP APCH	005	IF	XULBI	IAF	-	087° 097.4°T	5.0	R	A2500+	K240-
	010	TF	LEGVU	IF	-	178° 187.6°T	4.9		A2500+	
	020	TF	TOTMO	FAF LOC	-				A2000+	
	030	TF	KE361	MAPt LOC	Y	178° 187.9°T	-			
	040	CA	-	-	-	-	-		A500+	
	050	DF	DIRGU	MAHF	Y				A2500	

RNAV Holdings							
ID	INBD TR	INBD MAG	Turn Direction	MAX IAS	MNM HLDG LVL	TIME	DIST NM
LEGVU	187.5°T	178°	Right	230 KT	A2500	1 MIN	-
DIRGU	007.5°T	358°	Left	230 KT	A2500	1 MIN	-

WPT COORD
SEE PAGE EFKE AD 2.15 - 1

FINAL APPROACH PARAMETERS			
LOC Gradient	ILS		RDH
	CAT	GPA	
6.12 % (3.50°)	I	3.50°	59 FT