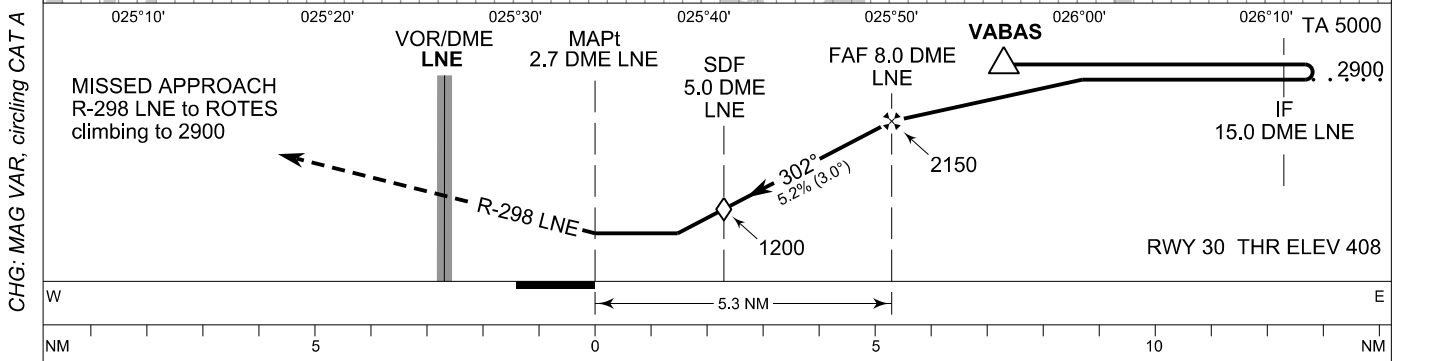
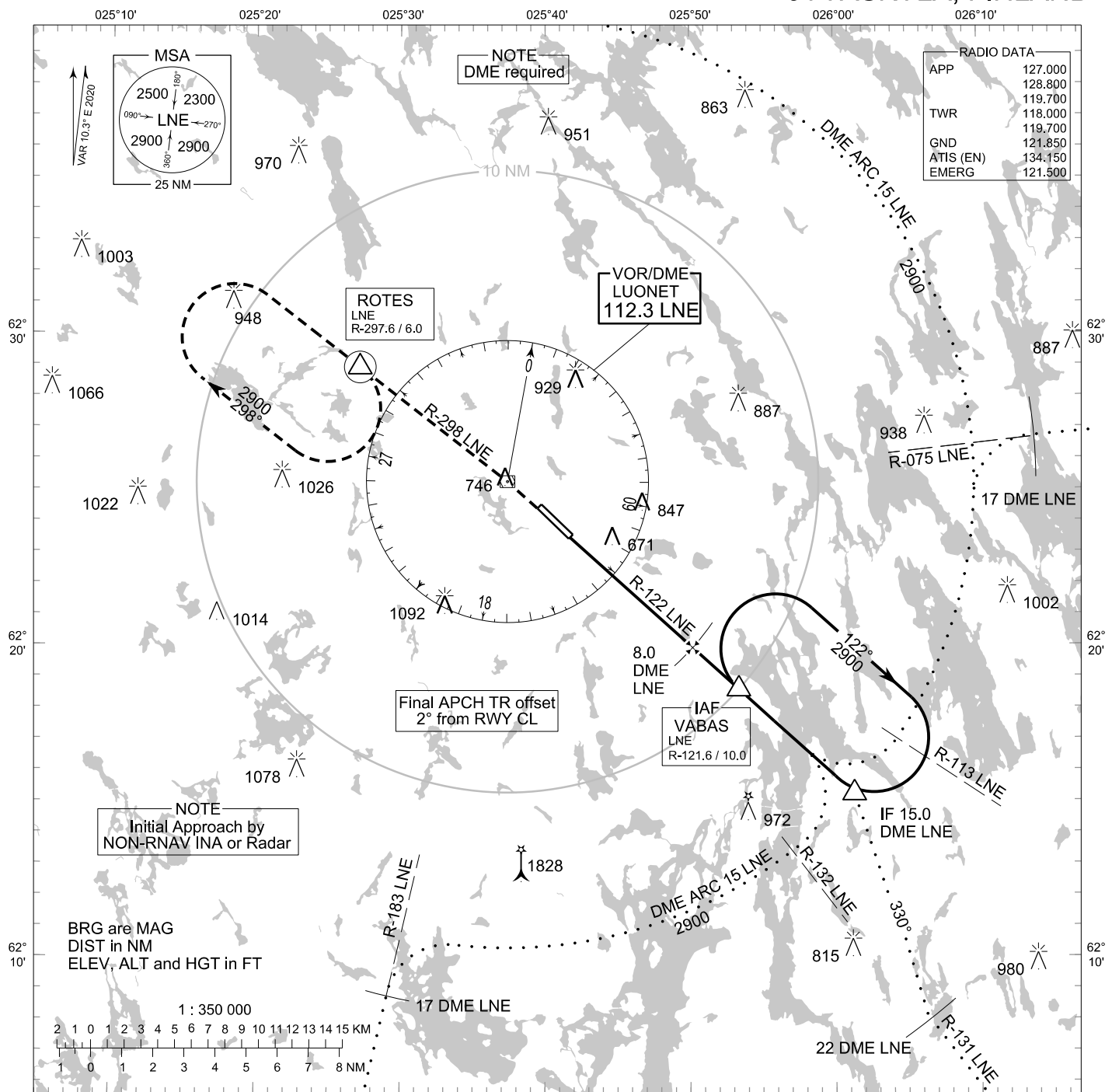


**INSTRUMENT
APPROACH CHART - ICAO**

ELEV 460 FT
HEIGHTS RELATED TO
THR RWY 30 ELEV 408 FT

**VOR RWY 30
JYVÄSKYLÄ AERODROME
JYVÄSKYLÄ, FINLAND**



OCA (H)	A	B	C	D
VOR	920 (510)			
VOR WO SDF	1200 (790)			
Circling	1050 (590)	1150 (690)	1330 (870)	1490 (1030)

Final Approach DIST	5.0 DME	6.0 DME	7.0 DME	8.0 DME		
Altitude (Height)	1200 (790)	1510 (1110)	1830 (1430)	2150 (1740)		
	kt	90	100	120	140	160
FAF - MAPt 5.3 NM	min:sec	3:32	3:11	2:39	2:16	1:59
Rate of descent	ft/min	480	530	640	740	850

Timing not authorized for defining the MAPt