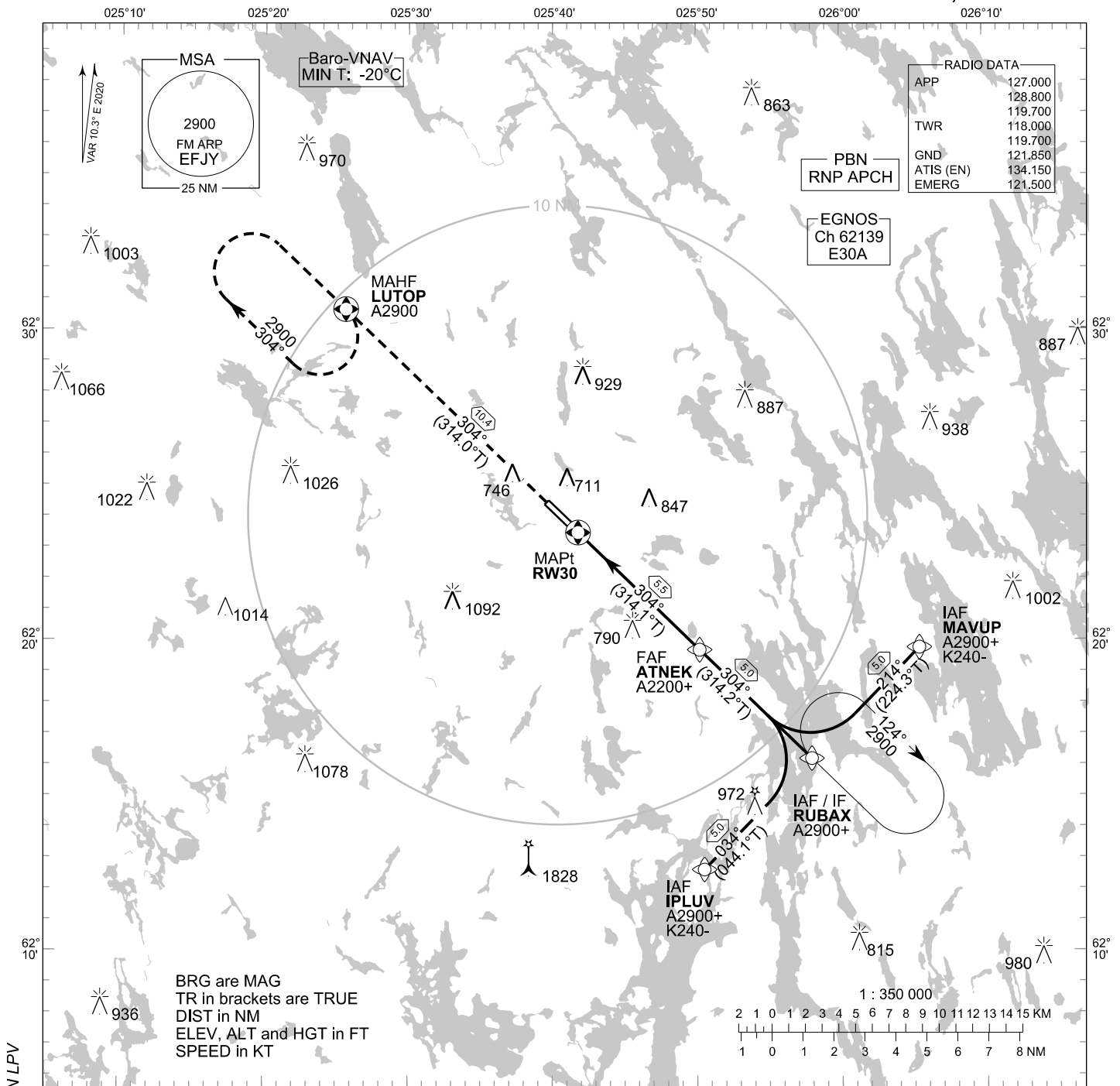


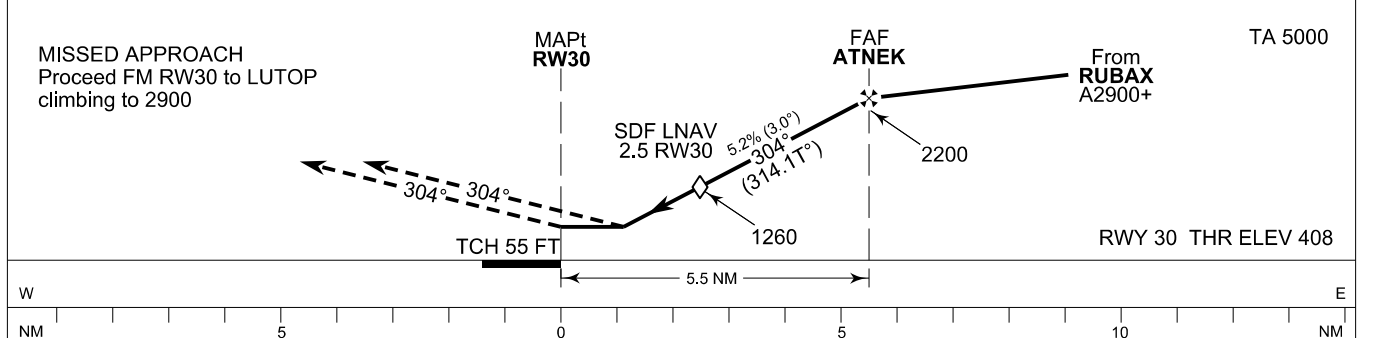
**INSTRUMENT  
APPROACH CHART - ICAO**

ELEV 460 FT  
HEIGHTS RELATED TO  
THR RWY 30 ELEV 408 FT

**RNP RWY 30  
JYVÄSKYLÄ AERODROME  
JYVÄSKYLÄ, FINLAND**



CHG: MAG VAR, OCA (H), ADDN LPV



OCA (H)	A	B	C	D
LPV	729 (322)	742 (335)	750 (343)	760 (353)
LNAV/VNAV	741 (334)	753 (346)	761 (354)	796 (389)
LNAV	830 (420)			
Circling	1050 (590)	1150 (690)	1330 (870)	1490 (1030)

DIST FM THR	2.0 NM	3.0 NM	4.0 NM	5.0 NM		
Altitude (Height)	1100 (690)	1420 (1010)	1740 (1330)	2050 (1650)		
	kt	90	100	120	140	160
FAF - MAPt 5.5 NM	min:sec	3:38	3:16	2:44	2:20	2:03
Rate of descent	ft/min	480	530	640	740	850

Timing not authorized for defining the MAPt

EFJY RNP RWY 30										
PROC ID NAV SPEC	SEQ NR	P/T	WPT			MAG GEO TR	DIST NM	Turn Direction	Constraints	
			ID	Type	Flyover				LVL	Speed
H30 IPLUV RNP APCH	005	IF	IPLUV	IAF	-	034°	5.0	L	A2900+	K240-
	010	TF	RUBAX	IF	-	044.1°T 304°			A2900+	
	020	TF	ATNEK	FAF	-	314.2°T 304°	5.0	A2200+		
	030	TF	RW30	MAPt	Y	314.1°T 304°	5.5			
	040	TF	LUTOP	MAHF	Y	314.0°T	10.4		A2900	

EFJY RNP RWY 30										
PROC ID NAV SPEC	SEQ NR	P/T	WPT			MAG GEO TR	DIST NM	Turn Direction	Constraints	
			ID	Type	Flyover				LVL	Speed
H30 RUBAX RNP APCH	010	IF	RUBAX	IAF/IF	-	304°	5.0		A2900+	
	020	TF	ATNEK	FAF	-	314.2°T 304°			A2200+	
	030	TF	RW30	MAPt	Y	314.1°T 304°	5.5			
	040	TF	LUTOP	MAHF	Y	314.0°T	10.4		A2900	

EFJY RNP RWY 30										
PROC ID NAV SPEC	SEQ NR	P/T	WPT			MAG GEO TR	DIST NM	Turn Direction	Constraints	
			ID	Type	Flyover				LVL	Speed
H30 MAVUP RNP APCH	005	IF	MAVUP	IAF	-	214°	5.0	R	A2900+	K240-
	010	TF	RUBAX	IF	-	224.3°T 304°			A2900+	
	020	TF	ATNEK	FAF	-	314.2°T 304°	5.0	A2200+		
	030	TF	RW30	MAPt	Y	314.1°T 304°	5.5			
	040	TF	LUTOP	MAHF	Y	314.0°T	10.4		A2900	

RNAV Holdings							
ID	INBD TR	INBD MAG	Turn Direction	Speed	MNM HLDG LVL	TIME	DIST NM
RUBAX	314.0°T	304°	Right	K230-	A2900	1 MIN	-
LUTOP	133.9°T	124°	Right	K230-	A2900	1 MIN	-

WPT COORD
SEE PAGE EFJY AD 2.15 - 1

FINAL APPROACH PARAMETERS			
LNAV Gradient	Baro-VNAV		TCH
	VPA	MNM T	
5.24 % (3.00°)	3.00°	-20°C	55 FT

SBAS DATA	
Approach ID	E30A
Service Provider	EGNOS
CRC remainder	F8 87 7B F4
Channel number	62139
Data Block	SEE EFJY AD 2.15 - 9