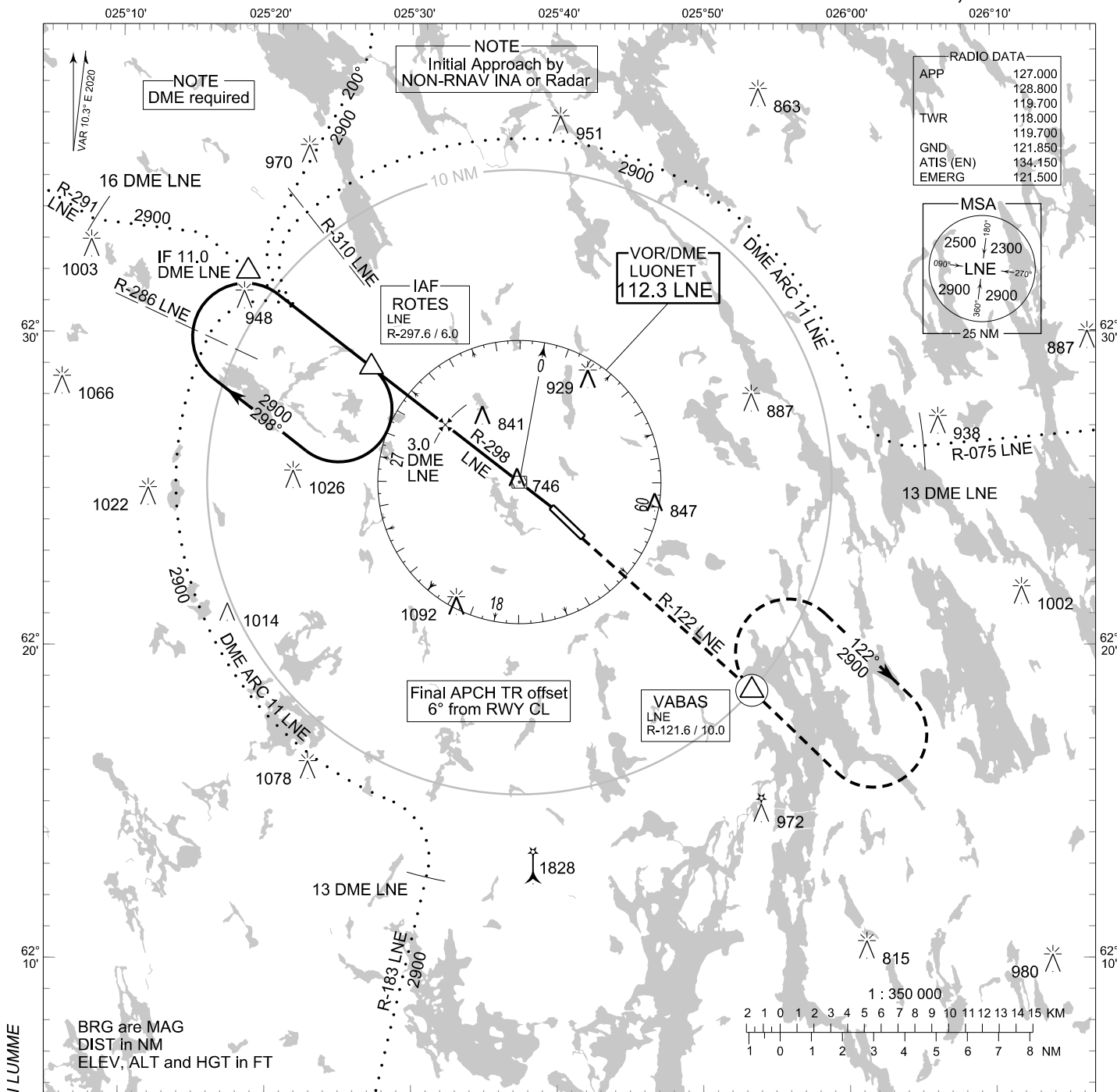


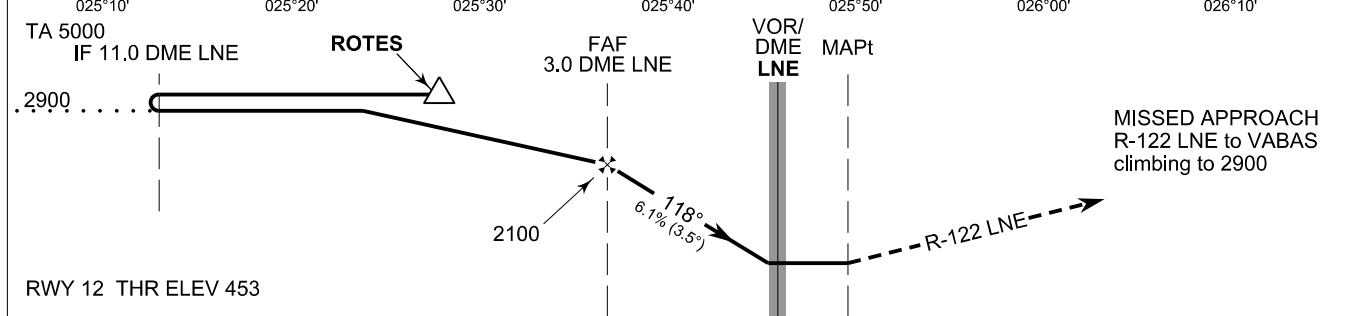
**INSTRUMENT  
APPROACH CHART - ICAO**

ELEV 460 FT  
HEIGHTS RELATED TO  
THR RWY 12 ELEV 453 FT

**VOR RWY 12  
JYVÄSKYLÄ AERODROME  
JYVÄSKYLÄ, FINLAND**



CHG: MAG VAR, OCA (H), ADDN LUMME



W					4.3 NM					E
NM					5					NM
	OCA (H)	A	B	C	D					
	VOR	1050 (600)								
	Circling	1050 (590)	1150 (690)	1330 (870)	1490 (1030)					
	Final Approach DIST	3.0 DME		2.0 DME		1.0 DME				
	Altitude (Height)	2100 (1650)		1730 (1270)		1360 (900)				
		kt	90	100	120	140	160			
	FAF - MAPt 4.3 NM	min:sec	2:52	2:35	2:09	1:51	1:37			
	Rate of descent	ft/min	560	620	740	870	990			