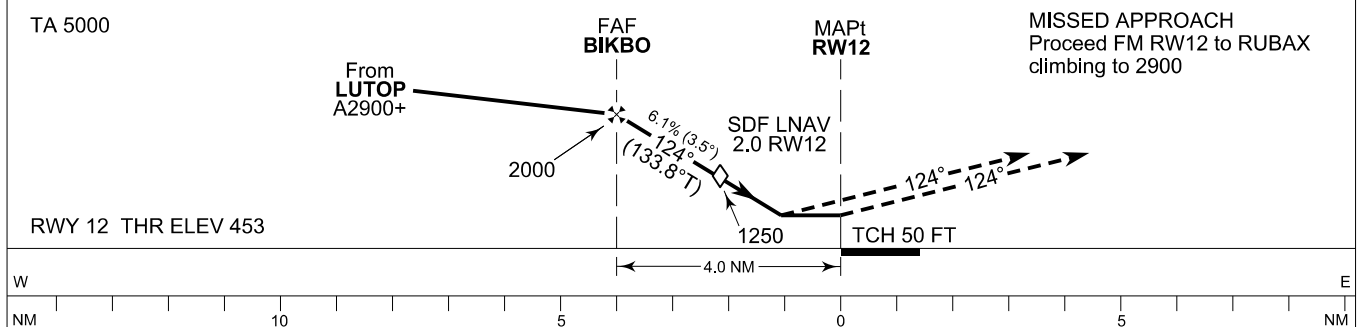
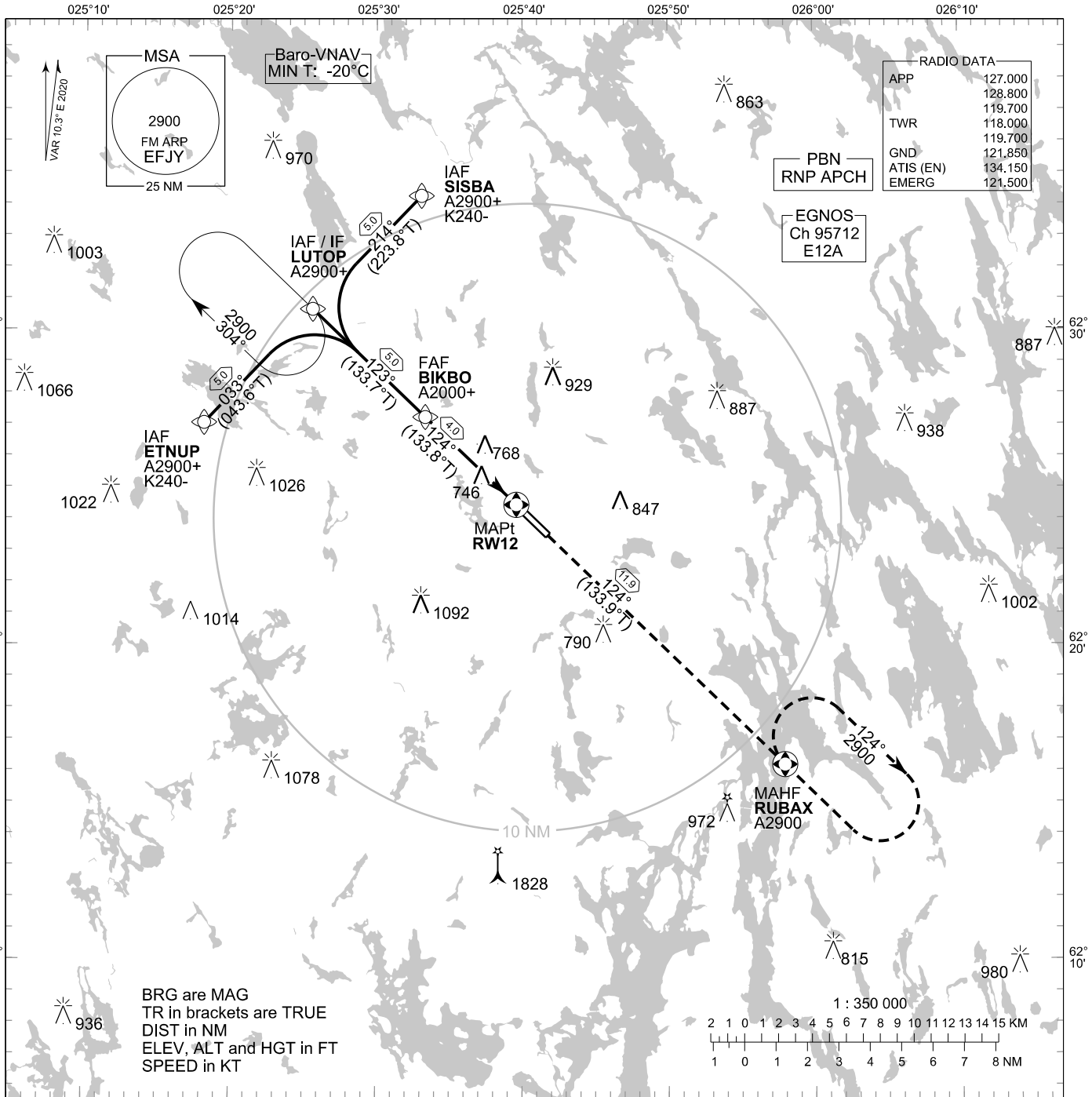


**INSTRUMENT  
APPROACH CHART - ICAO**

ELEV 460 FT  
HEIGHTS RELATED TO  
THR RWY 12 ELEV 453 FT

RNP RWY 12  
JYVÄSKYLÄ AERODROME  
JYVÄSKYLÄ, FINLAND

CHG: MAG VAR, OCA (H), SDF, ADDN LPV



OCA (H)	A	B	C	D
LPV	839 (386)	854 (401)	866 (413)	876 (423)
LNAV/VNAV	863 (410)	878 (425)	890 (437)	900 (447)
LNAV	1020 (570)			
Circling	1050 (590)	1150 (690)	1330 (870)	1490 (1030)

DIST FM THR	4.0 NM	3.0 NM	2.0 NM			
Altitude (Height)	1990 (1540)	1620 (1160)	1250 (790)			
	kt	90	100	120	140	160
FAF - MAPt 4.0 NM	mIn:sec	2:41	2:25	2:01	1:44	1:31
Rate of descent	ft/min	560	620	740	870	990

Timing not authorized for defining the MAPt

EFJY RNP RWY 12										
PROC ID NAV SPEC	SEQ NR	P/T	WPT			MAG GEO TR	DIST NM	Turn Direction	Constraints	
			ID	Type	Flyover				LVL	Speed
H12 SISBA RNP APCH	005	IF	SISBA	IAF	-	214°	5.0	L	A2900+	K240-
	010	TF	LUTOP	IF	-	223.8°T			A2900+	
	020	TF	BIKBO	FAF	-	123°	5.0		A2000+	
	030	TF	RW12	MAPt	Y	133.7°T	4.0			
	040	TF	RUBAX	MAHF	Y	124°	11.9		A2900	

EFJY RNP RWY 12										
PROC ID NAV SPEC	SEQ NR	P/T	WPT			MAG GEO TR	DIST NM	Turn Direction	Constraints	
			ID	Type	Flyover				LVL	Speed
H12 LUTOP RNP APCH	010	IF	LUTOP	IAF/IF	-	123°	5.0		A2900+	
	020	TF	BIKBO	FAF	-	133.7°T			A2000+	
	030	TF	RW12	MAPt	Y	124°	4.0			
	040	TF	RUBAX	MAHF	Y	133.8°T	11.9		A2900	

EFJY RNP RWY 12										
PROC ID NAV SPEC	SEQ NR	P/T	WPT			MAG GEO TR	DIST NM	Turn Direction	Constraints	
			ID	Type	Flyover				LVL	Speed
H12 ETNUP RNP APCH	005	IF	ETNUP	IAF	-	033°	5.0	R	A2900+	K240-
	010	TF	LUTOP	IF	-	043.6°T			A2900+	
	020	TF	BIKBO	FAF	-	123°	5.0		A2000+	
	030	TF	RW12	MAPt	Y	124°	4.0			
	040	TF	RUBAX	MAHF	Y	133.8°T	11.9		A2900	

RNAV Holdings							
ID	INBD TR	INBD MAG	Turn Direction	Speed	MNM HLDG LVL	TIME	DIST NM
LUTOP	133.9°T	124°	Right	K230-	A2900	1 MIN	-
RUBAX	314.0°T	304°	Right	K230-	A2900	1 MIN	-

WPT COORD
SEE PAGE EFJY AD 2.15 - 1

FINAL APPROACH PARAMETERS			
LNAV Gradient	Baro-VNAV		TCH
	VPA	MNM T	
6.11 % (3.50°)	3.50°	-20°C	50 FT

SBAS DATA	
Approach ID	E12A
Service Provider	EGNOS
CRC remainder	F3 18 4D C1
Channel number	95712
Data Block	SEE EFJY AD 2.15 - 9