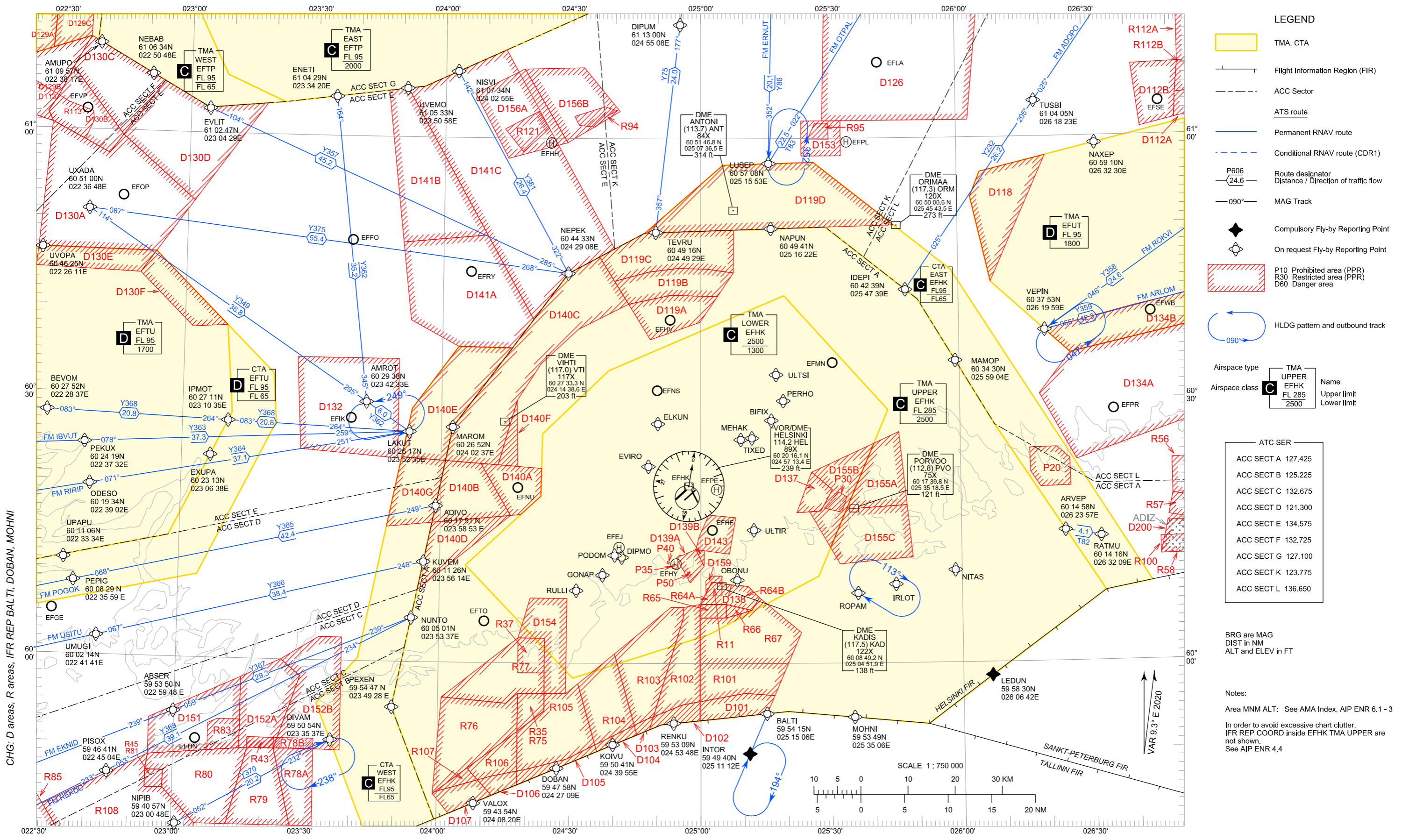


AREA CHART - ICAO

EFHK TMA



LEGEND

- TMA, CTA
- Flight Information Region (FIR)
- ACC Sector
- ATS route
- Permanent RNAV route
- Conditional RNAV route (CDR1)
- P606 Route designator Distance / Direction of traffic flow
- MAG Track
- Compulsory Fly-by Reporting Point
- On request Fly-by Reporting Point
- P10 Prohibited area (PPR)
- R30 Restricted area (PPR)
- D60 Danger area
- HLDG pattern and outbound track

Airspace type	TMA	UPPER	Name
Airspace class	C	EFHK	FL 285
		FL 95	1700
		FL 2500	2500

ATC SER

ACC SECT A	127.425
ACC SECT B	125.225
ACC SECT C	132.675
ACC SECT D	121.300
ACC SECT E	134.575
ACC SECT F	132.725
ACC SECT G	127.100
ACC SECT K	123.775
ACC SECT L	136.650

BRG are MAG
DIST in NM
ALT and ELEV in FT

Notes:
Area MNM ALT: See AMA Index, AIP ENR 6.1 - 3
In order to avoid excessive chart clutter, IFR REP COORD inside EFHK TMA UPPER are not shown. See AIP ENR 4.4

CHG: D areas, IFR REP BALTI, DOBAN, MOHNI