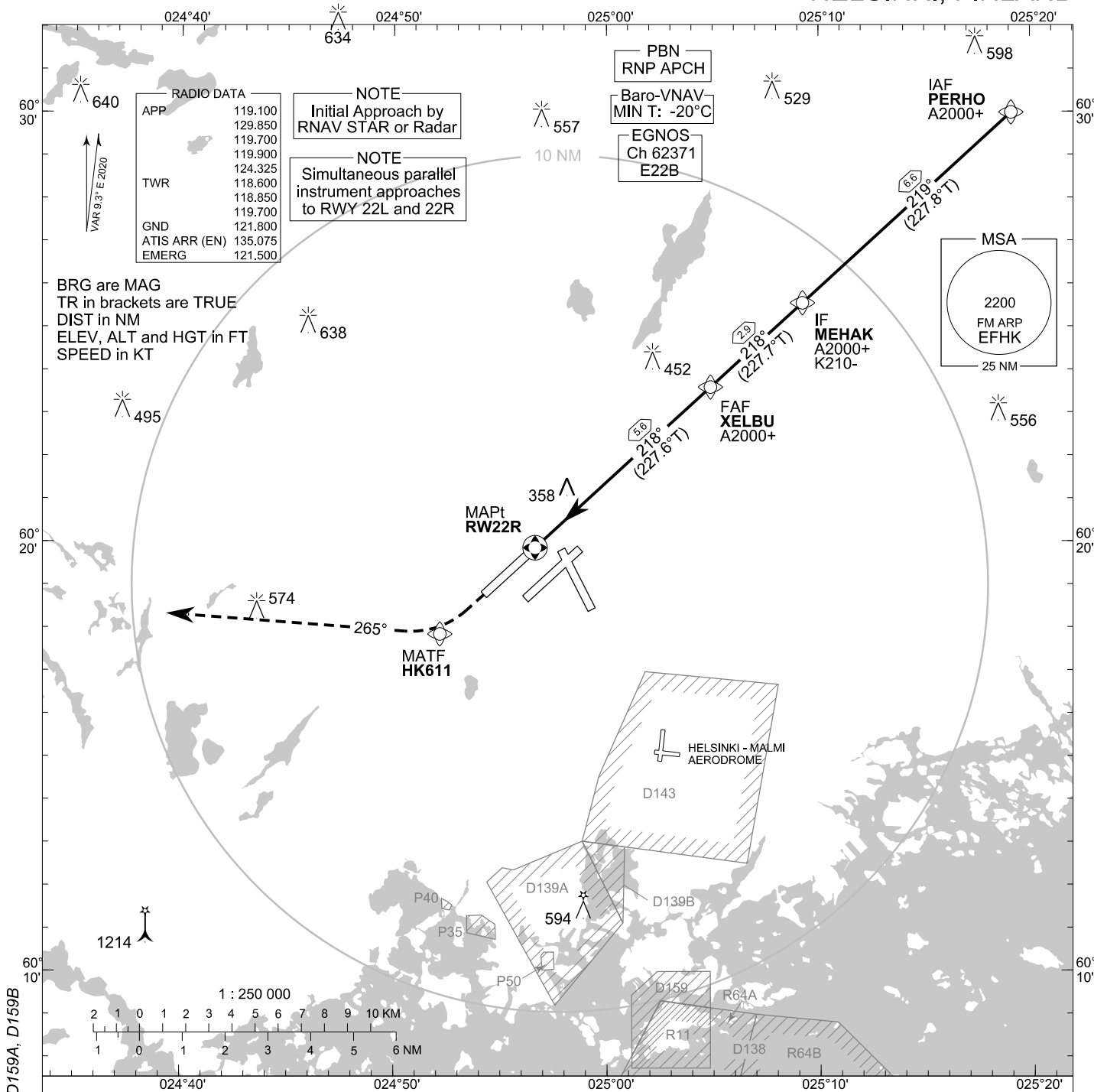


**INSTRUMENT
APPROACH CHART - ICAO**

ELEV 180 FT
HEIGHTS RELATED TO
AERODROME ELEV

RNP RWY 22R
HELSINKI-VANTAA AERODROME
HELSINKI, FINLAND



RADIO DATA

APP	119.100
	129.850
	119.700
TWR	119.900
	124.325
	118.600
	118.850
	119.700
GND	121.800
ATIS ARR (EN)	135.075
EMERG	121.500

NOTE
Initial Approach by
RNAV STAR or Radar

NOTE
Simultaneous parallel
instrument approaches
to RWY 22L and 22R

PBN
RNP APCH

Baro-VNAV
MIN T: -20°C

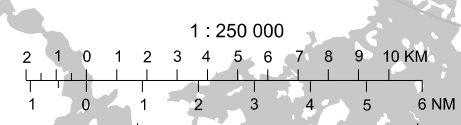
EGNOS
Ch 62371
E22B

MSA

2200
FM ARP
EFHK

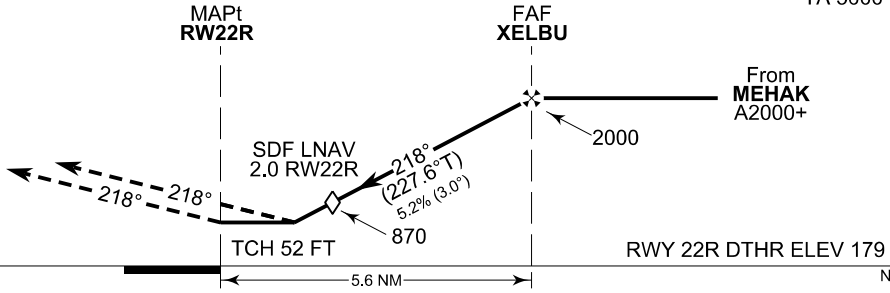
25 NM

BRG are MAG
TR in brackets are TRUE
DIST in NM
ELEV, ALT and HGT in FT
SPEED in KT



CHG: ADDN D159, R11. DEL D159A, D159B

MISSED APPROACH
Proceed FM RW22R towards
HK611 for right turn to
track 265° climbing to 2000.
Expect radar vectoring.



OCA (H)	A	B	C	D
LPV	412 (233)	425 (246)	433 (254)	491 (312)
LNAV/VNAV	458 (279)	471 (292)	479 (300)	489 (310)
LNAV	610 (430)			

DIST FM THR	2.0 NM	3.0 NM	4.0 NM	5.0 NM		
Altitude (Height)	870 (690)	1190 (1010)	1500 (1320)	1820 (1640)		
	kt	90	100	120	140	160
FAF - MAPt 5.6 NM	min:sec	3:42	3:20	2:47	2:23	2:05
Rate of descent	ft/min	480	530	640	740	850

Timing not authorized for defining the MAPt

EFHK RNP RWY 22R										
PROC ID NAV SPEC	SEQ NR	P/T	WPT			MAG	GEO TR	DIST NM	Constraints	
			ID	Type	Flyover				LVL	Speed
H22R PERHO RNP APCH	005	IF	PERHO	IAF	-				A2000+	
	010	TF	MEHAK	IF	-	219°	227.8°T	6.6	A2000+	K210-
	020	TF	XELBU	FAF	-	218°	227.7°T	2.9	A2000+	
	030	TF	RW22R	MAPt	Y	218°	227.6°T	5.6		
	040	TF	HK611	MATF	-	218°	227.5°T	3.0		
	050	CA	-	-	-	265°	274.3°T	-	A2000	

WPT COORD
SEE PAGE EFHK AD 2.15 - 1

FINAL APPROACH PARAMETERS			
LNAV Gradient	Baro-VNAV		TCH
	VPA	MNM T	
5.24 % (3.00°)	3.00°	-20°C	52 FT

SBAS DATA	
Approach ID	E22B
Service Provider	EGNOS
CRC remainder	DA C3 35 5B
Channel number	62371
Data Block	SEE EFHK AD 2.15 - 17