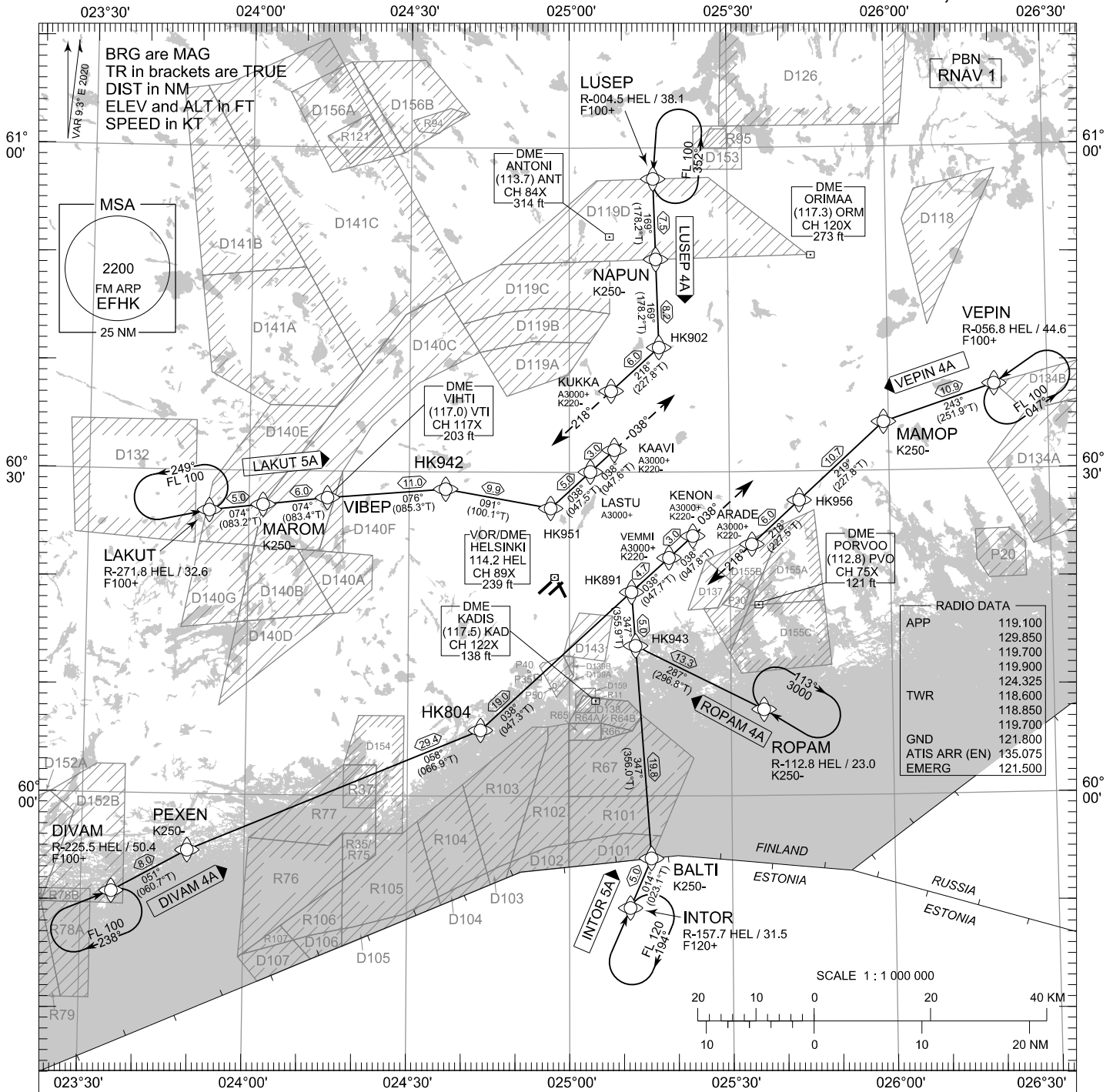


STANDARD ARRIVAL CHART
INSTRUMENT (STAR) - ICAO

TRANSITION ALT
5000

RNAV (DME/DME or GNSS) STAR RWY 22L
HELSINKI-VANTAA AERODROME
HELSINKI, FINLAND



RNAV STAR RWY 22L

DIVAM 4A INTOR 5A LAKUT 5A LUSEP 4A ROPAM 4A VEPIN 4A

DME/DME OPS: MORE THAN 2 DME INPUTS CANNOT BE GUARANTEED AT ALL TIMES.

AREA MNM ALT: SEE AMA INDEX, AIP ENR 6.1 - 3

ROUTES: RNAV PROC CODING ON THE VERSO OF THE CHART.

UNLESS OTHERWISE INSTRUCTED, STAR MUST BE FLOWN ACCORDING TO THE DEFINED WAYPOINT SEQUENCE UNTIL THE LAST WAYPOINT AND THEN CONTINUE ON THE DEFINED COURSE. ATC CLEARANCE TO INBOUND IS ALWAYS REQUIRED.

ATC WILL GIVE DESCENT CLEARANCES.

WPT CONSTRAINTS: ALT / FL / SPEED CONSTRAINTS MUST ALWAYS BE FOLLOWED AS PUBLISHED UNLESS EXPLICITLY CANCELLED BY ATC.

CD OPS: BY ATC CLR IF TFC PERMITS. PLAN CD PATH ACCORDING TO STAR FOLLOWED BY DCT INTERCEPT TO IAF OF THE ACKNOWLEDGED IAP OR AS ADVISED BY ATC.

RCF: SELECT TRANSPONDER CODE 7600.

RNAV STAR HAS BEEN GIVEN AND ACKNOWLEDGED: FOLLOW THE STAR UNTIL THE LAST WAYPOINT AND PROCEED TO IAF. IF RADAR VECTORED, CONTINUE 2 MIN ON LAST ASSIGNED AND ACKNOWLEDGED HDG AND ALT/FL, THEN RESUME STAR UNTIL THE LAST WAYPOINT AND PROCEED TO IAF.

RNAV STAR HAS NOT BEEN GIVEN AND ACKNOWLEDGED: CONTINUE 2 MIN ON LAST ASSIGNED AND ACKNOWLEDGED HDG AND ALT/FL, THEN PROCEED TO IAF.

FROM IAF EXECUTE IAP TO THE ACKNOWLEDGED RWY AND VACATE.

AIRCRAFT HAVING TELEPHONE, CALL +358 9 6151 3324.

CHG: D areas, R areas

EFHK RNAV STAR RWY 22L										
RTE NAV SPEC	SEQ NR	P/T	WPT		MAG	GEO TR	DIST NM	Constraints		
			ID	Flyover				LVL	LVL	Speed
DIVAM 4A RNAV 1	010	IF	DIVAM	-	-	-	-	F100+		
	020	TF	PEXEN	-	051°	060.7°T	8.0			K250-
	030	TF	HK804	-	058°	066.9°T	29.4			
	040	TF	HK891	-	038°	047.3°T	19.0			
	050	TF	VEMMI	-	038°	047.7°T	4.7	A3000+		K220-
	060	TF	KENON	-	038°	047.8°T	3.0	A3000+		K220-
	070	FM	KENON	-	038°	047.8°T	-	A3000+		K220-

INTOR 5A RNAV 1	010	IF	INTOR	-	-	-	-	F120+		
	020	TF	BALTI	-	014°	023.1°T	5.0			K250-
	030	TF	HK943	-	347°	356.0°T	19.8			
	040	TF	HK891	-	347°	355.9°T	5.0			
	050	TF	VEMMI	-	038°	047.7°T	4.7	A3000+		K220-
	060	TF	KENON	-	038°	047.8°T	3.0	A3000+		K220-
	070	FM	KENON	-	038°	047.8°T	-	A3000+		K220-

LAKUT 5A RNAV 1	010	IF	LAKUT	-	-	-	-	F100+		
	020	TF	MAROM	-	074°	083.2°T	5.0			K250-
	030	TF	VIBEP	-	074°	083.4°T	6.0			
	040	TF	HK942	-	076°	085.3°T	11.0			
	050	TF	HK951	-	091°	100.1°T	9.9			
	060	TF	LASTU	-	038°	047.5°T	5.0	A3000+		
	070	TF	KAIVI	-	038°	047.6°T	3.0	A3000+		K220-
080	FM	KAIVI	-	038°	047.6°T	-	A3000+		K220-	

LUSEP 4A RNAV 1	010	IF	LUSEP	-	-	-	-	F100+		
	020	TF	NAPUN	-	169°	178.2°T	7.5			K250-
	030	TF	HK902	-	169°	178.2°T	8.2			
	040	TF	KUKKA	-	218°	227.8°T	6.0	A3000+		K220-
	050	FM	KUKKA	-	218°	227.8°T	-	A3000+		K220-

ROPAM 4A RNAV 1	010	IF	ROPAM	-	-	-	-			K250-
	020	TF	HK943	-	287°	296.8°T	13.3			
	030	TF	HK891	-	347°	355.9°T	5.0			
	040	TF	VEMMI	-	038°	047.7°T	4.7	A3000+		K220-
	050	TF	KENON	-	038°	047.8°T	3.0	A3000+		K220-
	060	FM	KENON	-	038°	047.8°T	-	A3000+		K220-

VEPIN 4A RNAV 1	010	IF	VEPIN	-	-	-	-	F100+		
	020	TF	MAMOP	-	243°	251.9°T	10.9			K250-
	030	TF	HK956	-	219°	227.8°T	10.7			
	040	TF	ARADE	-	218°	227.5°T	6.0	A3000+		K220-
	050	FM	ARADE	-	218°	227.5°T	-	A3000+		K220-

RNAV Holdings							
ID	INBD TR	INBD MAG	Turn Direction	Speed	MNM HLDG LVL	TIME	DIST NM
DIVAM	067.4°T	058°	Right	K230-	F100	1 MIN	-
INTOR	023.1°T	014°	Right	K230-	F120	1 MIN	-
LAKUT	077.9°T	069°	Left	K230-	F100	1 MIN	-
LUSEP	181.3°T	172°	Left	K230-	F100	1 MIN	-
ROPAM	302.0°T	293°	Right	K230-	A3000	1 MIN	-
VEPIN	236.1°T	227°	Left	K230-	F100	1 MIN	-

WPT COORD
SEE PAGE EFHK AD 2.15 - 1