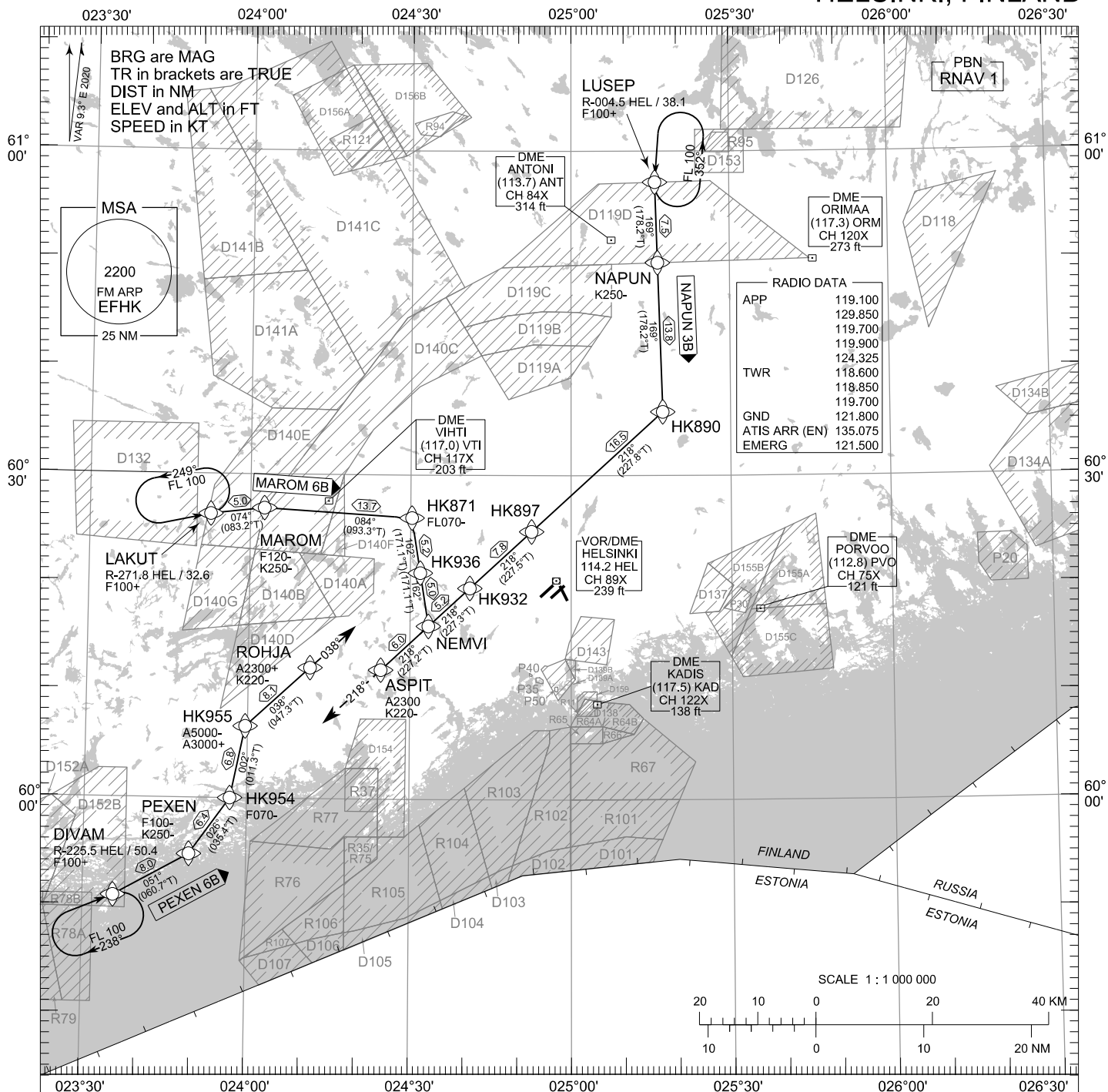


TRANSITION ALT
5000



RNAV STAR RWY 04L 2/2
MAROM 6B NAPUN 3B PEXEN 6B

- DME/DME OPS: MORE THAN 2 DME INPUTS CANNOT BE GUARANTEED AT ALL TIMES.
- AREA MNM ALT: SEE AMA INDEX, AIP ENR 6.1 - 3
- ROUTES: RNAV PROC CODING ON THE VERSO OF THE CHART.

UNLESS OTHERWISE INSTRUCTED, STAR MUST BE FLOWN ACCORDING TO THE DEFINED WAYPOINT SEQUENCE UNTIL THE LAST WAYPOINT AND THEN CONTINUE ON THE DEFINED COURSE. ATC CLEARANCE TO INBOUND IS ALWAYS REQUIRED.

ATC WILL GIVE DESCENT CLEARANCES.
- WPT CONSTRAINTS: ALT / FL / SPEED CONSTRAINTS MUST ALWAYS BE FOLLOWED AS PUBLISHED UNLESS EXPLICITLY CANCELLED BY ATC.
- CD OPS: BY ATC CLR IF TFC PERMITS. PLAN CD PATH ACCORDING TO STAR FOLLOWED BY DCT INTERCEPT TO IAF OF THE ACKNOWLEDGED IAP OR AS ADVISED BY ATC.

- RCF: SELECT TRANSPONDER CODE 7600.
- RNAV STAR HAS BEEN GIVEN AND ACKNOWLEDGED:
FOLLOW THE STAR UNTIL THE LAST WAYPOINT AND PROCEED TO IAF. IF RADAR VECTORED, CONTINUE 2 MIN ON LAST ASSIGNED AND ACKNOWLEDGED HDG AND ALT/FL, THEN RESUME STAR UNTIL THE LAST WAYPOINT AND PROCEED TO IAF.
- RNAV STAR HAS NOT BEEN GIVEN AND ACKNOWLEDGED:
CONTINUE 2 MIN ON LAST ASSIGNED AND ACKNOWLEDGED HDG AND ALT/FL, THEN PROCEED TO IAF.
- FROM IAF EXECUTE IAP TO THE ACKNOWLEDGED RWY AND VACATE.
- AIRCRAFT HAVING TELEPHONE, CALL +358 9 6151 3324.

CHG: D areas, R areas

EFHK RNAV STAR RWY 04L 2/2										
RTE NAV SPEC	SEQ NR	P/T	WPT		MAG	GEO TR	DIST NM	Constraints		
			ID	Flyover				LVL	LVL	Speed
MAROM 6B RNAV 1	010	IF	LAKUT	-	-	-	-	F100+		
	020	TF	MAROM	-	074°	083.2°T	5.0	F120-		K250-
	030	TF	HK871	-	084°	093.3°T	13.7	F070-		
	040	TF	HK936	-	162°	171.1°T	5.2			
	050	TF	NEMVI	-	162°	171.1°T	5.0			
	060	TF	ASPIT	-	218°	227.2°T	6.0	A2300		K220-
	070	FM	ASPIT	-	218°	227.2°T	-	A2300		K220-

NAPUN 3B RNAV 1	010	IF	LUSEP	-	-	-	-	F100+		
	020	TF	NAPUN	-	169°	178.2°T	7.5			K250-
	030	TF	HK890	-	169°	178.2°T	13.8			
	040	TF	HK897	-	218°	227.8°T	16.5			
	050	TF	HK932	-	218°	227.5°T	7.8			
	060	TF	NEMVI	-	218°	227.3°T	5.2			
	070	TF	ASPIT	-	218°	227.2°T	6.0	A2300		K220-
	080	FM	ASPIT	-	218°	227.2°T	-	A2300		K220-

PEXEN 6B RNAV 1	010	IF	DIVAM	-	-	-	-	F100+		
	020	TF	PEXEN	-	051°	060.7°T	8.0	F100-		K250-
	030	TF	HK954	-	026°	035.4°T	6.4	F070-		
	040	TF	HK955	-	002°	011.3°T	6.8	A5000-	A3000+	
	050	TF	ROHJA	-	038°	047.3°T	8.1	A2300+		K220-
	060	FM	ROHJA	-	038°	047.3°T	-	A2300+		K220-

RNAV Holdings							
ID	INBD TR	INBD MAG	Turn Direction	Speed	MNM HLDG LVL	TIME	DIST NM
DIVAM	067.4°T	058°	Right	K230-	F100	1 MIN	-
LAKUT	077.9°T	069°	Left	K230-	F100	1 MIN	-
LUSEP	181.3°T	172°	Left	K230-	F100	1 MIN	-

WPT COORD
SEE PAGE EFHK AD 2.15 - 1