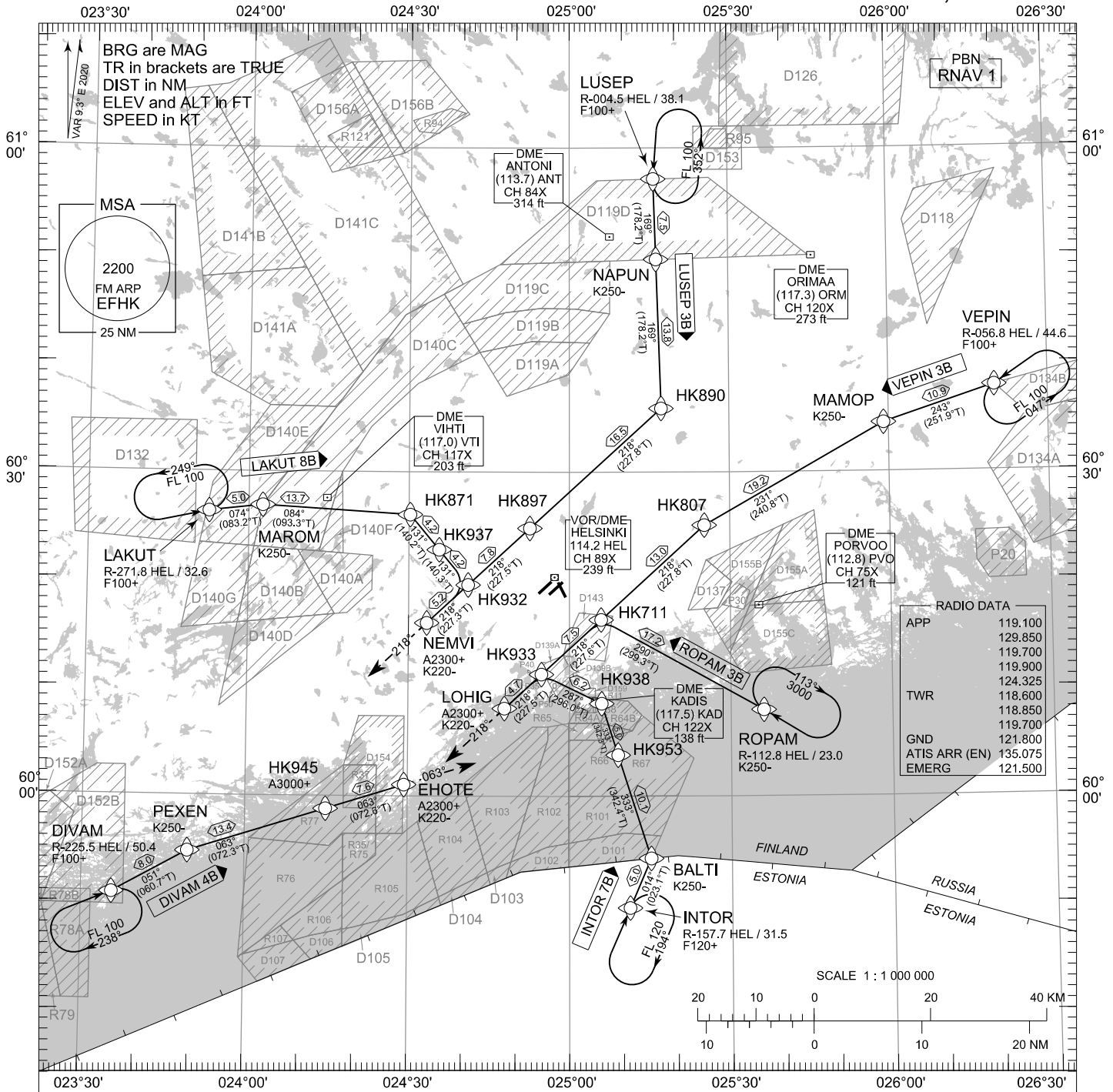
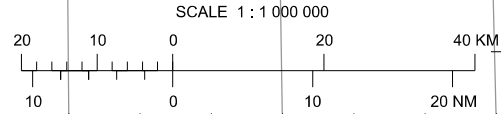


TRANSITION ALT  
5000



RADIO DATA	
APP	119.100
	129.850
	119.700
	119.900
	124.325
TWR	118.600
	118.850
	119.700
GND	121.800
ATIS ARR (EN)	135.075
EMERG	121.500



**RNAV STAR RWY 04L 1/2**

DIVAM 4B INTOR 7B LAKUT 8B LUSEP 3B ROPAM 3B VEPIN 3B

DME/DME OPS: MORE THAN 2 DME INPUTS CANNOT BE GUARANTEED AT ALL TIMES.

RCF: SELECT TRANSPONDER CODE 7600.

AREA MNM ALT: SEE AMA INDEX, AIP ENR 6.1 - 3

RNAV STAR HAS BEEN GIVEN AND ACKNOWLEDGED:  
FOLLOW THE STAR UNTIL THE LAST WAYPOINT AND PROCEED TO IAF.  
IF RADAR VECTORED, CONTINUE 2 MIN ON LAST ASSIGNED AND ACKNOWLEDGED HDG AND ALT/FL, THEN RESUME STAR UNTIL THE LAST WAYPOINT AND PROCEED TO IAF.

ROUTES: RNAV PROC CODING ON THE VERSO OF THE CHART.

UNLESS OTHERWISE INSTRUCTED, STAR MUST BE FLOWN ACCORDING TO THE DEFINED WAYPOINT SEQUENCE UNTIL THE LAST WAYPOINT AND THEN CONTINUE ON THE DEFINED COURSE. ATC CLEARANCE TO INBOUND IS ALWAYS REQUIRED.

RNAV STAR HAS NOT BEEN GIVEN AND ACKNOWLEDGED:  
CONTINUE 2 MIN ON LAST ASSIGNED AND ACKNOWLEDGED HDG AND ALT/FL, THEN PROCEED TO IAF.

ATC WILL GIVE DESCENT CLEARANCES.

FROM IAF EXECUTE IAP TO THE ACKNOWLEDGED RWY AND VACATE.

WPT CONSTRAINTS: ALT / FL / SPEED CONSTRAINTS MUST ALWAYS BE FOLLOWED AS PUBLISHED UNLESS EXPLICITLY CANCELLED BY ATC.

AIRCRAFT HAVING TELEPHONE, CALL +358 9 6151 3324.

CD OPS: BY ATC CLR IF TFC PERMITS. PLAN CD PATH ACCORDING TO STAR FOLLOWED BY DCT INTERCEPT TO IAF OF THE ACKNOWLEDGED IAP OR AS ADVISED BY ATC.

CHG: D areas, R areas.

EFHK RNAV STAR RWY 04L 1/2										
RTE NAV SPEC	SEQ NR	P/T	WPT		MAG	GEO TR	DIST NM	Constraints		
			ID	Flyover				LVL	LVL	Speed
DIVAM 4B RNAV 1	010	IF	DIVAM	-	-	-	-	F100+		
	020	TF	PEXEN	-	051°	060.7°T	8.0			K250-
	030	TF	HK945	-	063°	072.3°T	13.4	A3000+		
	040	TF	EHOTE	-	063°	072.6°T	7.6	A2300+		K220-
	050	FM	EHOTE	-	063°	072.6°T	-	A2300+		K220-

INTOR 7B RNAV 1	010	IF	INTOR	-	-	-	-	F120+		
	020	TF	BALTI	-	014°	023.1°T	5.0			K250-
	030	TF	HK953	-	333°	342.4°T	10.1			
	040	TF	HK938	-	333°	342.3°T	5.0			
	050	TF	HK933	-	287°	296.0°T	6.2			
	060	TF	LOHIG	-	218°	227.5°T	4.7	A2300+		K220-
	070	FM	LOHIG	-	218°	227.5°T	-	A2300+		K220-

LAKUT 8B RNAV 1	010	IF	LAKUT	-	-	-	-	F100+		
	020	TF	MAROM	-	074°	083.2°T	5.0			K250-
	030	TF	HK871	-	084°	093.3°T	13.7			
	040	TF	HK937	-	131°	140.2°T	4.2			
	050	TF	HK932	-	131°	140.3°T	4.2			
	060	TF	NEMVI	-	218°	227.3°T	5.2	A2300+		K220-
	070	FM	NEMVI	-	218°	227.3°T	-	A2300+		K220-

LUSEP 3B RNAV 1	010	IF	LUSEP	-	-	-	-	F100+		
	020	TF	NAPUN	-	169°	178.2°T	7.5			K250-
	030	TF	HK890	-	169°	178.2°T	13.8			
	040	TF	HK897	-	218°	227.8°T	16.5			
	050	TF	HK932	-	218°	227.5°T	7.8			
	060	TF	NEMVI	-	218°	227.3°T	5.2	A2300+		K220-
	070	FM	NEMVI	-	218°	227.3°T	-	A2300+		K220-

ROPAM 3B RNAV 1	010	IF	ROPAM	-	-	-	-			K250-
	020	TF	HK711	-	290°	299.3°T	17.2			
	030	TF	HK933	-	218°	227.6°T	7.5			
	040	TF	LOHIG	-	218°	227.5°T	4.7	A2300+		K220-
	050	FM	LOHIG	-	218°	227.5°T	-	A2300+		K220-

VEPIN 3B RNAV 1	010	IF	VEPIN	-	-	-	-	F100+		
	020	TF	MAMOP	-	243°	251.9°T	10.9			K250-
	030	TF	HK807	-	231°	240.8°T	19.2			
	040	TF	HK711	-	218°	227.8°T	13.0			
	050	TF	HK933	-	218°	227.6°T	7.5			
	060	TF	LOHIG	-	218°	227.5°T	4.7	A2300+		K220-
	070	FM	LOHIG	-	218°	227.5°T	-	A2300+		K220-

RNAV Holdings							
ID	INBD TR	INBD MAG	Turn Direction	Speed	MNM HLDG LVL	TIME	DIST NM
DIVAM	067.4°T	058°	Right	K230-	F100	1 MIN	-
INTOR	023.1°T	014°	Right	K230-	F120	1 MIN	-
LAKUT	077.9°T	069°	Left	K230-	F100	1 MIN	-
LUSEP	181.3°T	172°	Left	K230-	F100	1 MIN	-
ROPAM	302.0°T	293°	Right	K230-	A3000	1 MIN	-
VEPIN	236.1°T	227°	Left	K230-	F100	1 MIN	-

WPT COORD
SEE PAGE EFHK AD 2.15 - 1