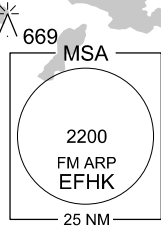
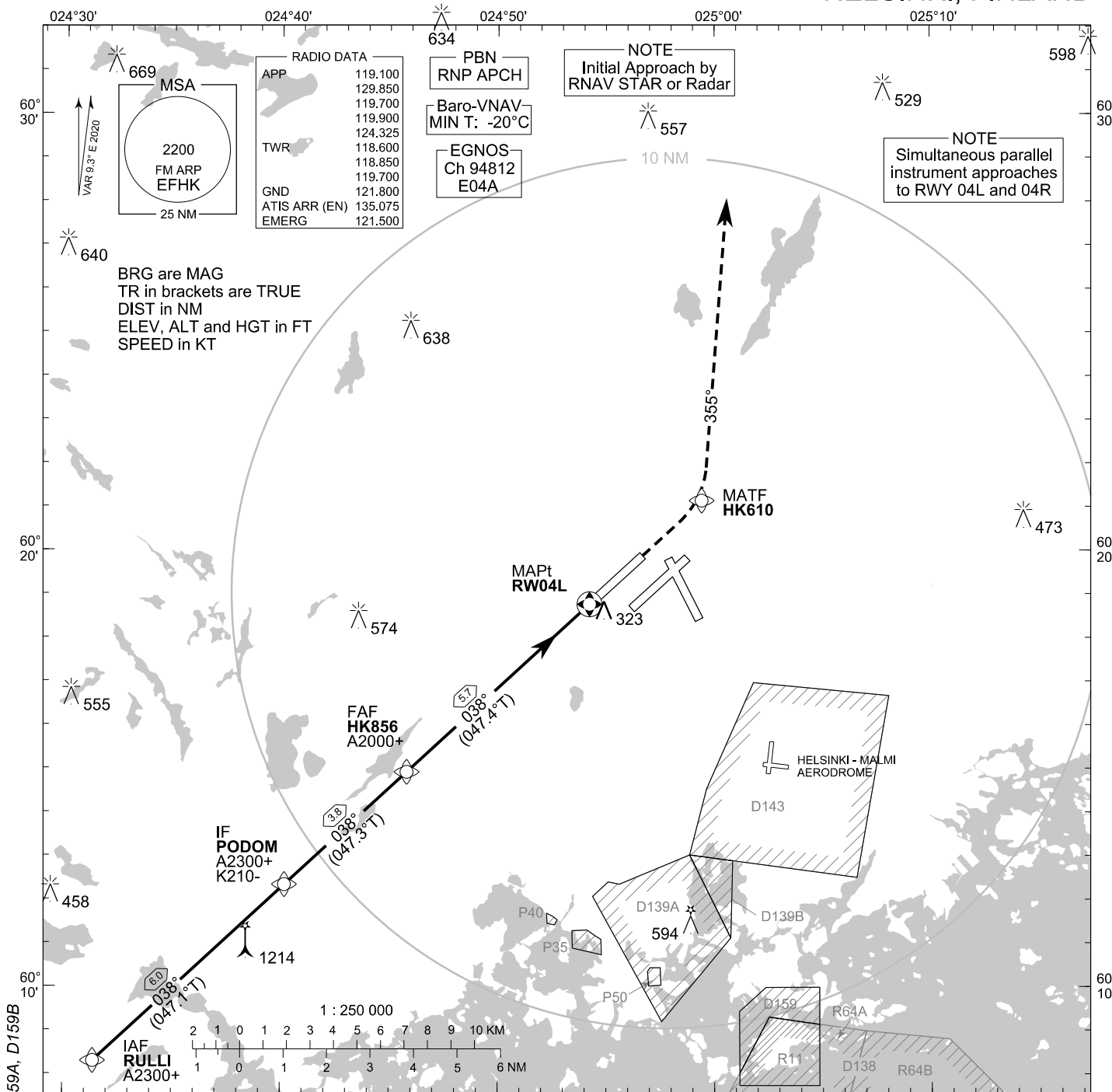


**INSTRUMENT
APPROACH CHART - ICAO**

ELEV 180 FT
HEIGHTS RELATED TO
THR RWY 04L ELEV 134 FT

**RNP RWY 04L
HELSINKI-VANTAA AERODROME
HELSINKI, FINLAND**



RADIO DATA

APP	119.100
	129.850
	119.700
	119.900
	124.325
TWR	118.600
	118.850
	119.700
GND	121.800
ATIS ARR (EN)	135.075
EMERG	121.500

PBN
RNP APCH

Baro-VNAV
MIN T: -20°C

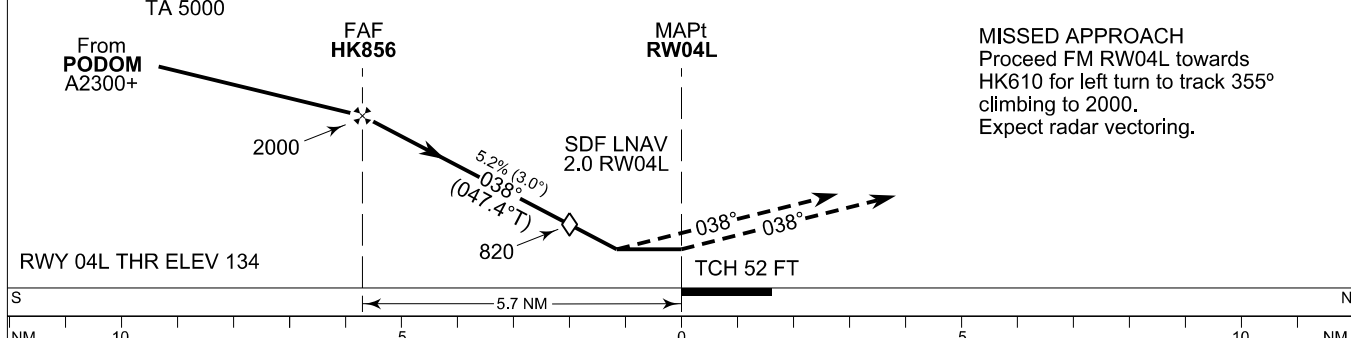
EGNOS
Ch 94812
E04A

NOTE
Initial Approach by
RNAV STAR or Radar

NOTE
Simultaneous parallel
instrument approaches
to RWY 04L and 04R

BRG are MAG
TR in brackets are TRUE
DIST in NM
ELEV, ALT and HGT in FT
SPEED in KT

CHG: ADDN D159, R11. DEL D159A, D159B



MISSED APPROACH
Proceed FM RW04L towards
HK610 for left turn to track 355°
climbing to 2000.
Expect radar vectoring.

OCA (H)	A	B	C	D
LPV	369 (236)	381 (248)	389 (256)	400 (267)
LNAV/VNAV	415 (282)	427 (294)	436 (303)	446 (313)
LNAV	570 (440)			

DIST FM THR	5.0 NM	4.0 NM	3.0 NM	2.0 NM		
Altitude (Height)	1780 (1640)	1460 (1330)	1140 (1010)	820 (690)		
	kt	90	100	120	140	160
FAF - MAPt 5.7 NM	min:sec	3:48	3:25	2:51	2:27	2:08
Rate of descent	ft/min	480	530	640	740	850

Timing not authorized for defining the MAPt

EFHK RNP RWY 04L										
PROC ID NAV SPEC	SEQ NR	P/T	WPT			MAG	GEO TR	DIST NM	Constraints	
			ID	Type	Flyover				LVL	Speed
H04L RULLI RNP APCH	005	IF	RULLI	IAF	-				A2300+	
	010	TF	PODOM	IF	-	038°	047.1°T	6.0	A2300+	K210-
	020	TF	HK856	FAF	-	038°	047.3°T	3.8	A2000+	
	030	TF	RW04L	MAPt	Y	038°	047.4°T	5.7		
	040	TF	HK610	MATF	-	038°	047.5°T	3.5		
	050	CA	-	-	-	355°	004.3°T	-	A2000	

WPT COORD
SEE PAGE EFHK AD 2.15 - 1

FINAL APPROACH PARAMETERS			
LNAV Gradient	Baro-VNAV		TCH
	VPA	MNM T	
5.24 % (3.00°)	3.00°	-20°C	52 FT

SBAS DATA	
Approach ID	E04A
Service Provider	EGNOS
CRC remainder	16 92 13 CC
Channel number	94812
Data Block	SEE EFHK AD 2.15 - 17