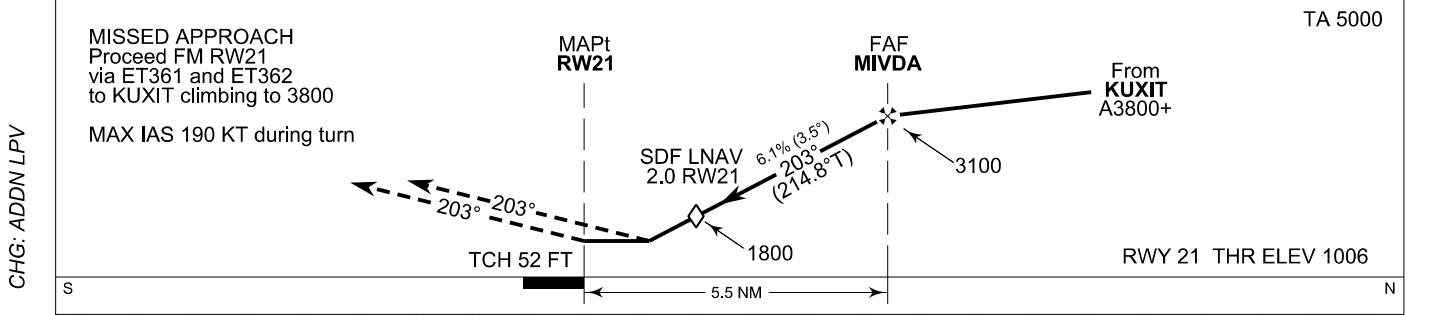
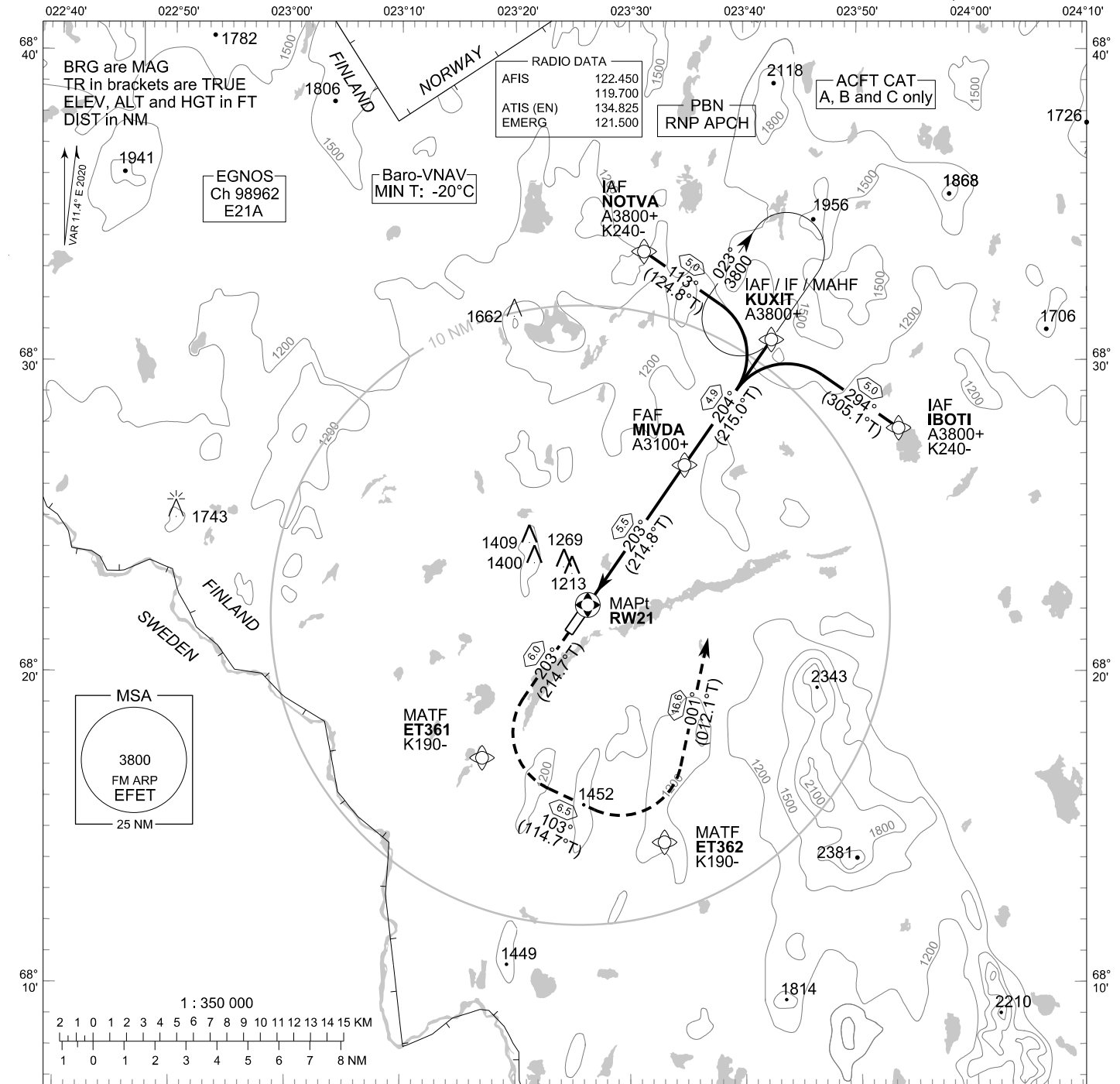


**INSTRUMENT
APPROACH CHART - ICAO**

ELEV 1006 FT
HEIGHTS RELATED TO
THR RWY 21 ELEV 1006 FT

**RNP RWY 21
ENONTEKIÖ AERODROME
ENONTEKIÖ, FINLAND**



OCA (H)	A	B	C
LPV	1240 (234)	1255 (249)	1273 (267)
LNAV/VNAV	1319 (313)	1334 (328)	1346 (340)
LNAV	1480 (480)		
Circling	1570 (560)	1700 (690)	1810 (800)

DIST FM THR	2.0 NM	3.0 NM	4.0 NM	5.0 NM		
Altitude (Height)	1800 (800)	2170 (1170)	2550 (1540)	2920 (1910)		
	kt	90	100	120	140	160
FAF - MAPt 5.5 NM	min:sec	3:40	3:18	2:45	2:21	2:04
Rate of descent	ft/min	560	620	740	870	990

Timing not authorized for defining the MAPt

EFET RNP RWY 21										
PROC ID NAV SPEC	SEQ NR	P/T	WPT			MAG GEO TR	DIST NM	Turn Direction	Constraints	
			ID	Type	Flyover				LVL	Speed
H21 IBOTI RNP APCH	005	IF	IBOTI	IAF	-	294°	5.0		A3800+	K240-
	010	TF	KUXIT	IF	-	305.1°T			L	A3800+
	020	TF	MIVDA	FAF	-	204°	4.9		A3100+	
	030	TF	RW21	MAPt	Y	215.0°T	5.5			
	040	TF	ET361	MATF	-	203°	6.0	L		K190-
	050	TF	ET362	MATF	-	214.8°T	6.5	L		K190-
	060	TF	KUXIT	MAHF	Y	103°	16.6		A3800	

EFET RNP RWY 21										
PROC ID NAV SPEC	SEQ NR	P/T	WPT			MAG GEO TR	DIST NM	Turn Direction	Constraints	
			ID	Type	Flyover				LVL	Speed
H21 KUXIT RNP APCH	010	IF	KUXIT	IAF/IF	-	204°	4.9		A3800+	
	020	TF	MIVDA	FAF	-	215.0°T			A3100+	
	030	TF	RW21	MAPt	Y	203°	5.5			
	040	TF	ET361	MATF	-	214.8°T	6.0	L		K190-
	050	TF	ET362	MATF	-	203°	6.5	L		K190-
	060	TF	KUXIT	MAHF	Y	114.7°T	16.6		A3800	

EFET RNP RWY 21										
PROC ID NAV SPEC	SEQ NR	P/T	WPT			MAG GEO TR	DIST NM	Turn Direction	Constraints	
			ID	Type	Flyover				LVL	Speed
H21 NOTVA RNP APCH	005	IF	NOTVA	IAF	-	113°	5.0		A3800+	K240-
	010	TF	KUXIT	IF	-	124.8°T			R	A3800+
	020	TF	MIVDA	FAF	-	204°	4.9		A3100+	
	030	TF	RW21	MAPt	Y	215.0°T	5.5			
	040	TF	ET361	MATF	-	203°	6.0	L		K190-
	050	TF	ET362	MATF	-	214.8°T	6.5	L		K190-
	060	TF	KUXIT	MAHF	Y	103°	16.6		A3800	

RNAV Holdings							
ID	INBD TR	INBD MAG	Turn Direction	Speed	MNM HLDG LVL	TIME	DIST NM
KUXIT	214.7°T	203°	Right	K230-	A3800	1 MIN	-

WPT COORD
SEE PAGE EFET AD 2.15 - 1

FINAL APPROACH PARAMETERS			
LNAV Gradient	Baro-VNAV		TCH
	VPA	MNM T	
6.12 % (3.50°)	3.50°	-20°C	52 FT

SBAS DATA	
Approach ID	E21A
Service Provider	EGNOS
CRC remainder	7A 03 FD F4
Channel number	98962
Data Block	SEE EFET AD 2.15 - 9