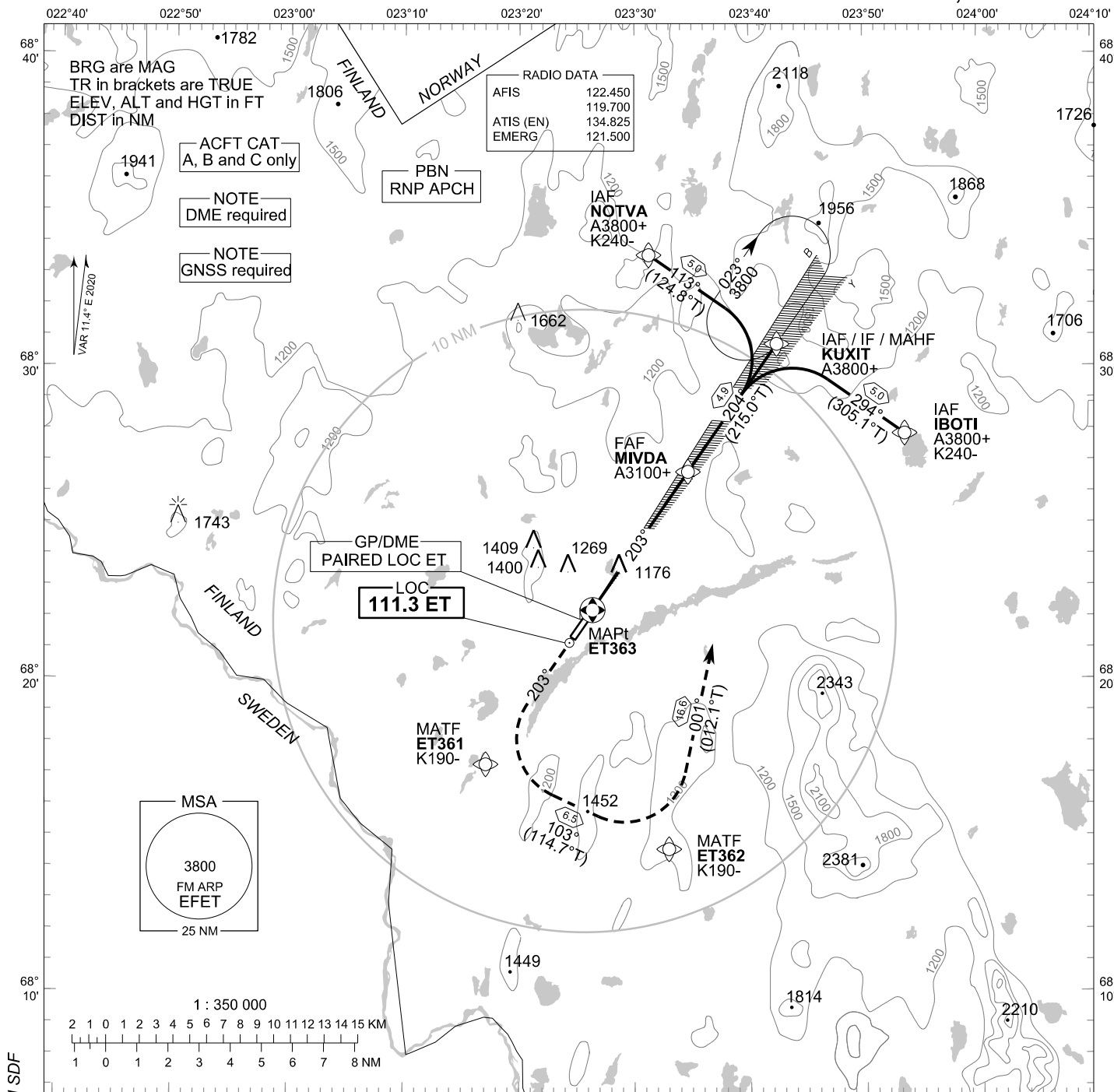


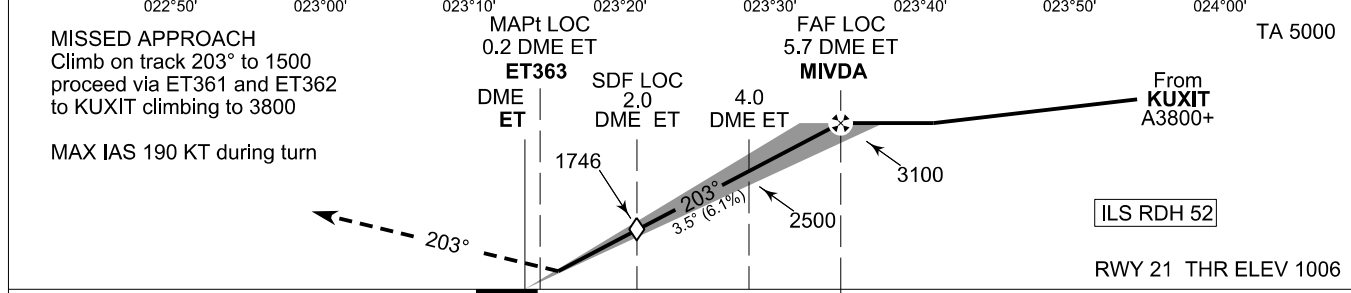
**INSTRUMENT  
APPROACH CHART - ICAO**

ELEV 1006 FT  
HEIGHTS RELATED TO  
THR RWY 21 ELEV 1006 FT

ILS or LOC RWY 21  
ENONTEKIÖ AERODROME  
ENONTEKIÖ, FINLAND



CHG: MAG VAR, OCA(H), ADDN SDF



S				5.5 NM					N		
NM				5					NM		
	OCA (H)	A	B	C							
	ILS CAT I	1175 (169)	1183 (177)	1193 (187)							
	LOC	1430 (420)									
	Circling	1570 (560)	1700 (690)	1810 (800)							
					kt	90	100	120	140	160	
					min:sec	3:39	3:17	2:44	2:21	2:03	
					Rate of descent	ft/min	560	620	740	870	990
Timing not authorized for defining the MAPt											

EFET ILS or LOC RWY 21										
PROC ID NAV SPEC	SEQ NR	P/T	WPT			MAG GEO TR	DIST NM	Turn Direction	Constraints	
			ID	Type	Flyover				LVL	Speed
I21 IBOTI RNP APCH	005	IF	IBOTI	IAF	-	294° 305.1°T	5.0	L	A3800+	K240-
	010	TF	KUXIT	IF	-				204° 215.0°T	4.9
	020	TF	MIVDA	FAF LOC	-					
	030	TF	ET363	MAPt LOC	Y	203° 214.4°T	-		A1500+	
	040	CA	-	-	-					
	050	DF	ET361	MATF	-	103° 114.7°T	6.5	L		K190-
	060	TF	ET362	MATF	-				001° 012.1°T	16.6
	070	TF	KUXIT	MAHF	Y					

EFET ILS or LOC RWY 21										
PROC ID NAV SPEC	SEQ NR	P/T	WPT			MAG GEO TR	DIST NM	Turn Direction	Constraints	
			ID	Type	Flyover				LVL	Speed
I21 KUXIT RNP APCH	010	IF	KUXIT	IAF/IF	-	204° 215.0°T	4.9		A3800+	
	020	TF	MIVDA	FAF LOC	-					
	030	TF	ET363	MAPt LOC	Y	203° 214.4°T	-		A1500+	
	040	CA	-	-	-					
	050	DF	ET361	MATF	-	103° 114.7°T	6.5	L		K190-
	060	TF	ET362	MATF	-				001° 012.1°T	16.6
	070	TF	KUXIT	MAHF	Y					

EFET ILS or LOC RWY 21										
PROC ID NAV SPEC	SEQ NR	P/T	WPT			MAG GEO TR	DIST NM	Turn Direction	Constraints	
			ID	Type	Flyover				LVL	Speed
I21 NOTVA RNP APCH	005	IF	NOTVA	IAF	-	113° 124.8°T	5.0	R	A3800+	K240-
	010	TF	KUXIT	IF	-				204° 215.0°T	4.9
	020	TF	MIVDA	FAF LOC	-					
	030	TF	ET363	MAPt LOC	Y	203° 214.4°T	-		A1500+	
	040	CA	-	-	-					
	050	DF	ET361	MATF	-	103° 114.7°T	6.5	L		K190-
	060	TF	ET362	MATF	-				001° 012.1°T	16.6
	070	TF	KUXIT	MAHF	Y					

RNAV Holdings							
ID	INBD TR	INBD MAG	Turn Direction	MAX IAS	MNM HLDG LVL	TIME	DIST NM
KUXIT	214.7°T	203°	Right	230 KT	A3800	1 MIN	-

WPT COORD
SEE PAGE EFET AD 2.15 - 1

FINAL APPROACH PARAMETERS			
LOC Gradient	ILS		RDH
	CAT	GPA	
6.12 % (3.50°)	I	3.50°	52 FT