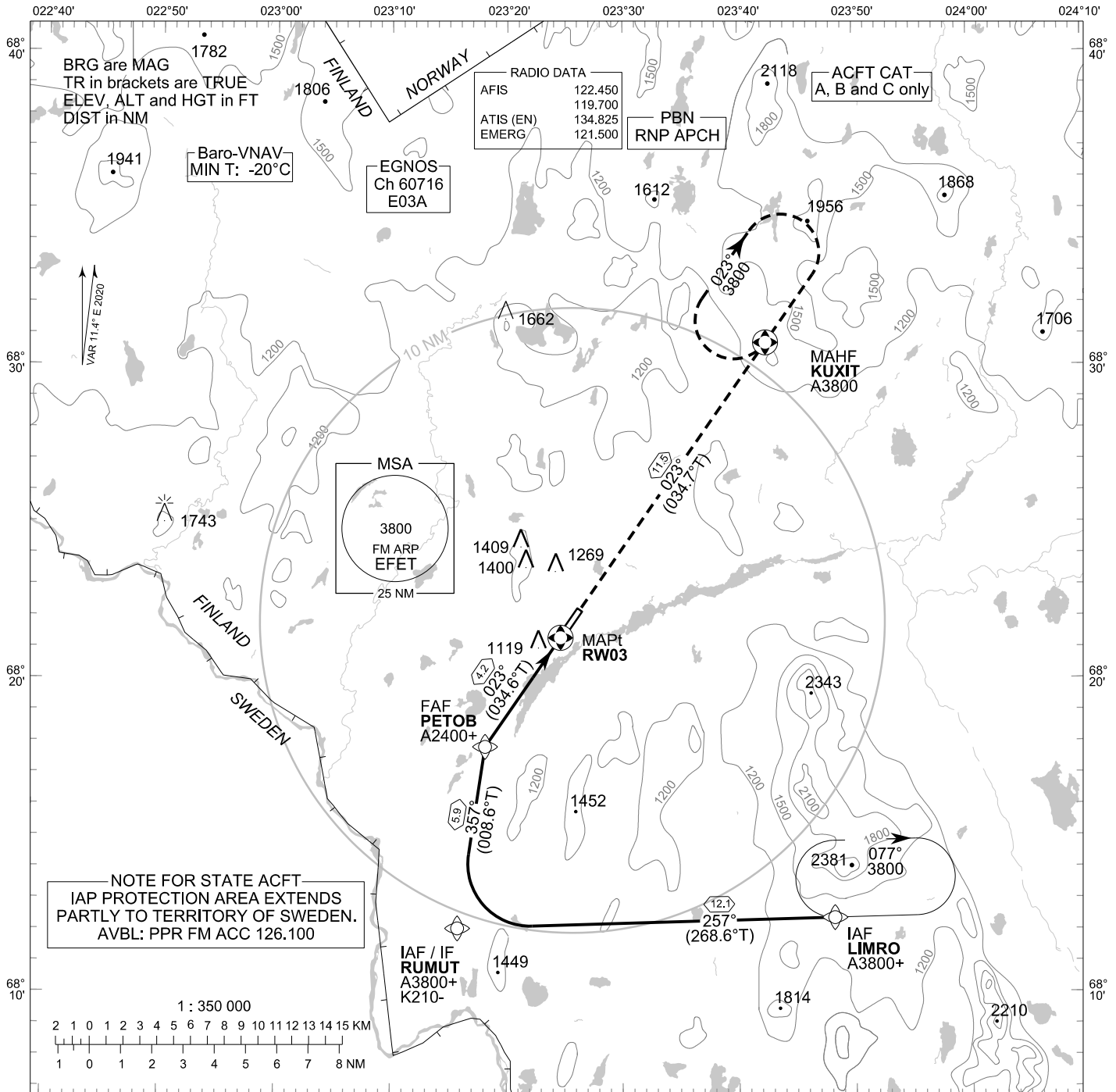


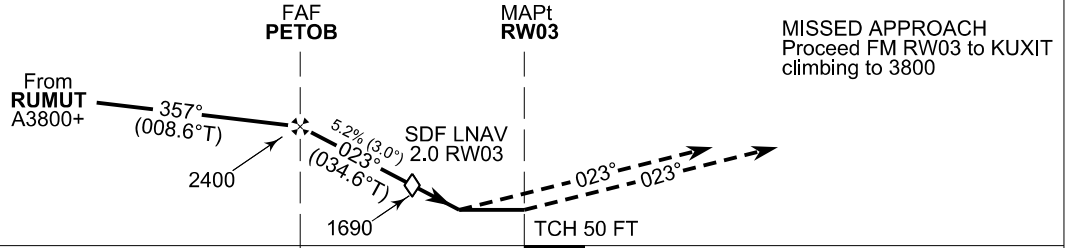
**INSTRUMENT
APPROACH CHART - ICAO**

ELEV 1006 FT
HEIGHTS RELATED TO
THR RWY 03 ELEV 1000 FT

**RNP RWY 03
ENONTEKIÖ AERODROME
ENONTEKIÖ, FINLAND**



TA 5000



S N

NM NM

OCA (H)	A	B	C
LPV	1208 (209)	1221 (222)	1229 (230)
LNAV/VNAV	1247 (248)	1260 (261)	1268 (269)
LNAV	1370 (370)		
Circling	1570 (560)	1700 (690)	1810 (800)

DIST FM THR	4.0 NM		3.0 NM		2.0 NM	
Altitude (Height)	2320 (1320)		2000 (1010)		1690 (690)	
	kt	90	100	120	140	160
FAF - MAPt 4.2 NM	min:sec	2:50	2:33	2:07	1:49	1:35
Rate of descent	ft/min	480	530	640	740	850

Timing not authorized for defining the MAPt

EFET RNP RWY 03										
PROC ID NAV SPEC	SEQ NR	P/T	WPT			MAG GEO TR	DIST NM	Turn Direction	Constraints	
			ID	Type	Flyover				LVL	Speed
H03 RUMUT RNP APCH	010	IF	RUMUT	IAF/IF	-	357° 008.6°T	5.9		A3800+	K210-
	020	TF	PETOB	FAF	-	023° 034.6°T			A2400+	
	030	TF	RW03	MAPt	Y	023° 034.7°T	11.5			
	040	TF	KUXIT	MAHF	Y				A3800	

EFET RNP RWY 03										
PROC ID NAV SPEC	SEQ NR	P/T	WPT			MAG GEO TR	DIST NM	Turn Direction	Constraints	
			ID	Type	Flyover				LVL	Speed
H03 LIMRO RNP APCH	005	IF	LIMRO	IAF	-	257° 268.6°T	12.1	R	A3800+	
	010	TF	RUMUT	IF	-	357° 008.6°T			A3800+	K210-
	020	TF	PETOB	FAF	-	023° 034.6°T	4.2		A2400+	
	030	TF	RW03	MAPt	Y	023° 034.7°T				
	040	TF	KUXIT	MAHF	Y			A3800		

RNAV Holdings							
ID	INBD TR	INBD MAG	Turn Direction	Speed	MNM HLDG LVL	TIME	DIST NM
LIMRO	268.1°T	257°	Right	K230-	A3800	1 MIN	-
KUXIT	214.7°T	203°	Right	K230-	A3800	1 MIN	-

WPT COORD
SEE PAGE EFET AD 2.15 - 1

FINAL APPROACH PARAMETERS			
LNAV Gradient	Baro-VNAV		TCH
	VPA	MNM T	
5.24 % (3.00°)	3.00°	-20°C	50 FT

SBAS DATA	
Approach ID	E03A
Service Provider	EGNOS
CRC remainder	1D 1F CF AD
Channel number	60716
Data Block	SEE EFET AD 2.15 - 9