

# AIP SUPPLEMENT - SUOMI / FINLAND

Aeronautical Information Service

www.ais.fi

ANS Finland, PL 157, FI-01531 VANTAA, ais@ansfinland.fi

AIP SUP NR

**90 / 2017**

**AIRAC**

**WEF**

**20 JUL 2017**

## OULUN LENTOASEMA, LENTOMENETELMÄT AJALLA 20.7. - 14.9.2017

Julkaisupäivä 8.6.2017

REF AIP SUP 87/2017

Alla luetellut lentomenetelmät on julkaistu ajalle **20.7. - 14.9.2017** tämän Supplementin liitteinä.

## OULU AERODROME, INSTRUMENT APPROACH PROCEDURES FROM 20 JUL TO 14 SEP 2017

Publication date 08 JUN 2017

REF AIP SUP 87/2017

The instrument approach procedures listed below have been published **for the period 20 JUL - 14 SEP 2017** as Appendices to this Supplement.

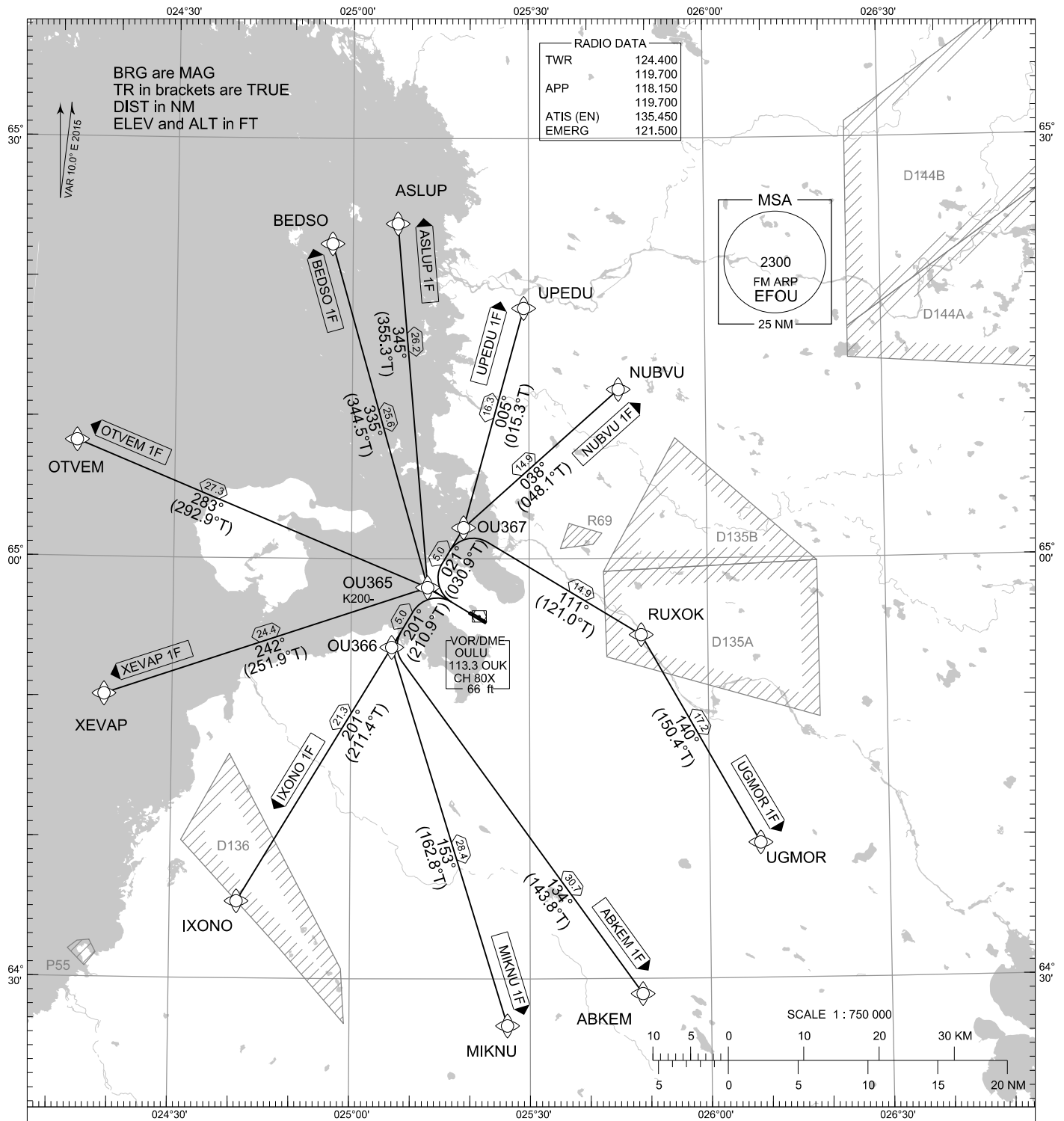
### LIITTEET / APPENDICES:

1. EFOU RNAV SID RWY 30C
2. EFOU RNAV STAR RWY 30C
3. EFOU RNAV (GNSS) RWY 30C
4. EFOU VOR RWY 30C

STANDARD DEPARTURE CHART  
INSTRUMENT (SID) - ICAO

TRANSITION ALT  
5000

RNAV<sup>(GNSS)</sup> SID RWY 30C  
OULU AERODROME  
OULU, FINLAND



RNAV SID RWY 30C

ABKEM 1F ASLUP 1F BEDSO 1F IXONO 1F MIKNU 1F NUBVU 1F OTVEM 1F UGMOR 1F UPEDU 1F XEVAP 1F

NAV SPECIFICATION: RNAV 1 OR P-RNAV APPROVAL REQUIRED. OTHERWISE ADVISE ATC

DME/DME OPS: NOT SUPPORTED

ROUTES: RNAV PROC CODING ON THE VERSO OF THE CHART

SQUAWK: WHEN LINING UP SQUAWK THE ASSIGNED CODE

INITIAL CLIMB: MNM TURNING ALT ACCORDING TO RTE CODING

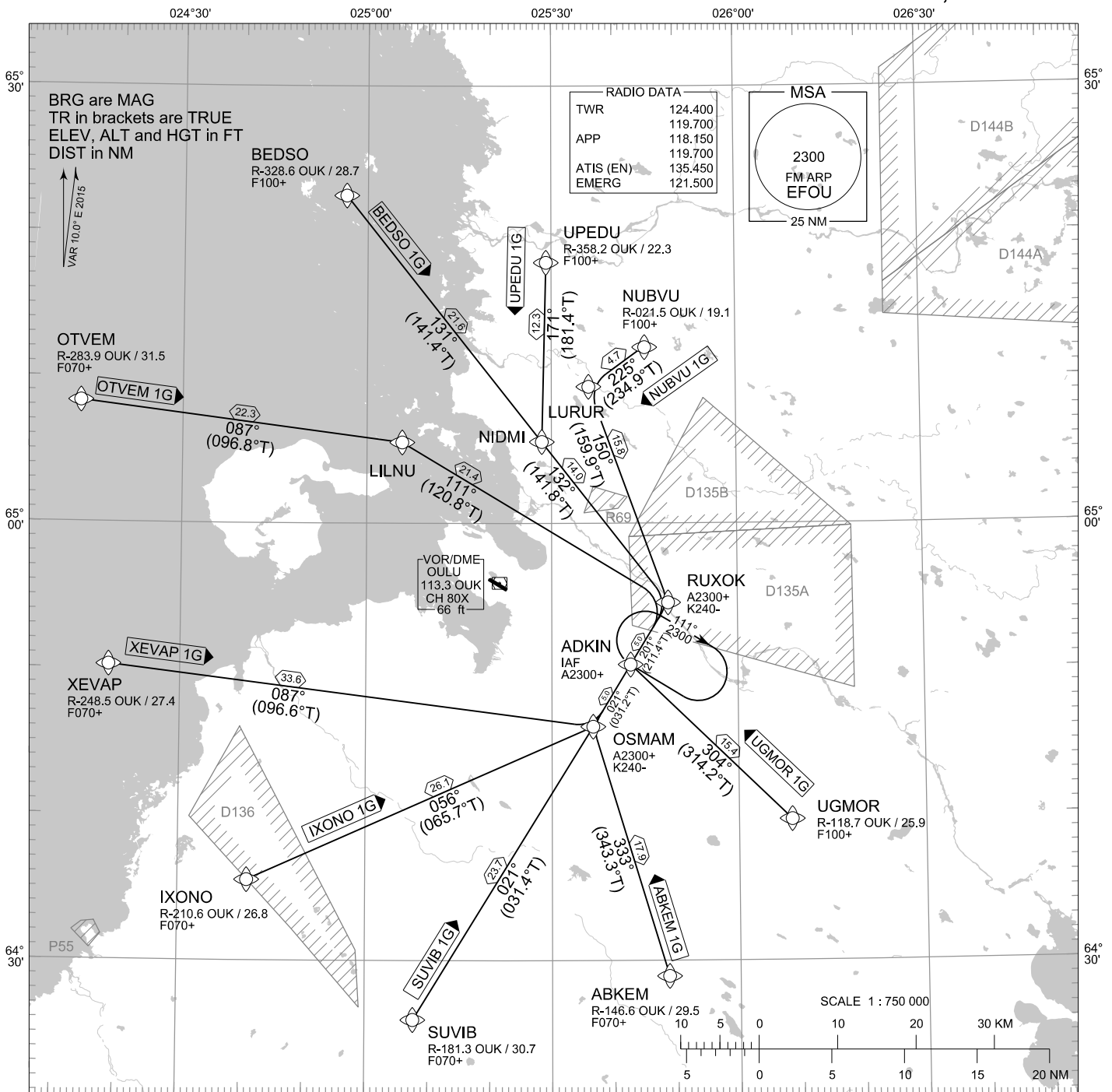
NOISE ABATEMENT: AFTER TAKE-OFF CLIMB AS RAPIDLY AS POSSIBLE TO AT LEAST 2000 FT ABOVE AD ELEV  
PUBLISHED SID ROUTES ARE ALSO MINIMUM NOISE ROUTINGS

AREA MNM ALT: SEE AMA INDEX, AIP ENR 6.1 - 3

EFOU RNAV SID RWY 30C										
RTE NAV SPEC	SEQ NR	P/T	WPT		MAG	GEO TR	DIST NM	Turn Direction	Constraints	
			ID	Flyover					LVL	Speed
ABKEM 1F RNAV 1 or P-RNAV	010	CA	-	-	291°	301.0°T	-		A450+	
	020	DF	OU365	-	-	-	-			K200-
	030	TF	OU366	-	201°	210.9°T	5.0	L		
	040	TF	ABKEM	-	134°	143.8°T	30.7			
ASLUP 1F RNAV 1 or P-RNAV	010	CA	-	-	291°	301.0°T	-		A450+	
	020	DF	OU365	-	-	-	-			K200-
	030	TF	ASLUP	-	345°	355.3°T	26.2			
BEDSO 1F RNAV 1 or P-RNAV	010	CA	-	-	291°	301.0°T	-		A450+	
	020	DF	OU365	-	-	-	-			K200-
	030	TF	BEDSO	-	335°	344.5°T	25.6			
IXONO 1F RNAV 1 or P-RNAV	010	CA	-	-	291°	301.0°T	-		A450+	
	020	DF	OU365	-	-	-	-			K200-
	030	TF	OU366	-	201°	210.9°T	5.0			
	040	TF	IXONO	-	201°	211.4°T	21.3			
MIKNU 1F RNAV 1 or P-RNAV	010	CA	-	-	291°	301.0°T	-		A450+	
	020	DF	OU365	-	-	-	-			K200-
	030	TF	OU366	-	201°	210.9°T	5.0	L		
	040	TF	MIKNU	-	153°	162.8°T	28.4			
NUBVU 1F RNAV 1 or P-RNAV	010	CA	-	-	291°	301.0°T	-		A450+	
	020	DF	OU365	-	-	-	-			K200-
	030	TF	OU367	-	021°	030.9°T	5.0			
	040	TF	NUBVU	-	038°	048.1°T	14.9			
OTVEM 1F RNAV 1 or P-RNAV	010	CA	-	-	291°	301.0°T	-		A450+	
	020	DF	OU365	-	-	-	-			K200-
	030	TF	OTVEM	-	283°	292.9°T	27.3			
UGMOR 1F RNAV 1 or P-RNAV	010	CA	-	-	291°	301.0°T	-		A450+	
	020	DF	OU365	-	-	-	-			K200-
	030	TF	OU367	-	021°	030.9°T	5.0	R		
	040	TF	RUXOK	-	111°	121.0°T	14.9	R		
	050	TF	UGMOR	-	140°	150.4°T	17.2			
UPEDU 1F RNAV 1 or P-RNAV	010	CA	-	-	291°	301.0°T	-		A450+	
	020	DF	OU365	-	-	-	-			K200-
	030	TF	OU367	-	021°	030.9°T	5.0			
	040	TF	UPEDU	-	005°	015.3°T	16.3			
XEVAP 1F RNAV 1 or P-RNAV	010	CA	-	-	291°	301.0°T	-		A450+	
	020	DF	OU365	-	-	-	-			K200-
	030	TF	XEVAP	-	242°	251.9°T	24.4			

**WPT COORD**

SEE PAGE EFOU AD 2.15 - 1



**RNAV STAR RWY 30C**

ABKEM 1G BEDSO 1G IXONO 1G NUBVU 1G OTVEM 1G SUVIB 1G UGMOR 1G UPEDU 1G XEVAP 1G

NAV SPECIFICATION: RNAV 1 OR P-RNAV APPROVAL REQUIRED. OTHERWISE ADVISE ATC

DME/DME OPS: NOT SUPPORTED

ROUTES: RNAV PROC CODING ON THE VERSO OF THE CHART  
ATC WILL GIVE DESCENT CLEARANCES

WPT CONSTRAINTS: ALT / FL / SPEED CONSTRAINTS MUST ALWAYS BE FOLLOWED AS  
PUBLISHED UNLESS EXPLICITLY CANCELLED BY ATC

CD OPS: BY ATC CLR IF TFC PERMITS. PLAN CD PATH ACCORDING TO STAR

NOISE ABATEMENT: AVOID OVERFLYING THE CITY OF OULU BELOW 2000

RCF: SELECT TRANSPONDER CODE 7600

RNAV STAR HAS BEEN GIVEN AND ACKNOWLEDGED: FOLLOW THE  
STAR TO THE RESPECTIVE RWY AND EXECUTE IAP AND LAND

DURING RADAR VECTORING BEFORE IAF: IN ACCORDANCE WITH  
THE RULES OF THE AIR

AREA MNM ALT: SEE AMA INDEX, AIP ENR 6.1-3

EFOU RNAV STAR RWY 30C										
RTE NAV SPEC	SEQ NR	P/T	WPT		MAG	GEO TR	DIST NM	Turn Direction	Constraints	
			ID	Flyover					LVL	Speed
ABKEM 1G RNAV 1 or P-RNAV	010	IF	ABKEM	-	-	-	-		F070+	
	020	TF	OSMAM	-	333°	343.3°T	17.9	R	A2300+	K240-
	030	TF	ADKIN	-	021°	031.2°T	5.0		A2300+	
BEDSO 1G RNAV 1 or P-RNAV	010	IF	BEDSO	-	-	-	-		F100+	
	020	TF	NIDMI	-	131°	141.4°T	21.6			
	030	TF	RUXOK	-	132°	141.8°T	14.0	R	A2300+	K240-
	040	TF	ADKIN	-	201°	211.4°T	5.0		A2300+	
IXONO 1G RNAV 1 or P-RNAV	010	IF	IXONO	-	-	-	-		F070+	
	020	TF	OSMAM	-	056°	065.7°T	26.1	L	A2300+	K240-
	030	TF	ADKIN	-	021°	031.2°T	5.0		A2300+	
NUBVU 1G RNAV 1 or P-RNAV	010	IF	NUBVU	-	-	-	-		F100+	
	020	TF	LURUR	-	225°	234.9°T	4.7	L		
	030	TF	RUXOK	-	150°	159.9°T	15.8	R	A2300+	K240-
	040	TF	ADKIN	-	201°	211.4°T	5.0		A2300+	
OTVEM 1G RNAV 1 or P-RNAV	010	IF	OTVEM	-	-	-	-		F070+	
	020	TF	LILNU	-	087°	096.8°T	22.3			
	030	TF	RUXOK	-	111°	120.8°T	21.4	R	A2300+	K240-
	040	TF	ADKIN	-	201°	211.4°T	5.0		A2300+	
SUVIB 1G RNAV 1 or P-RNAV	010	IF	SUVIB	-	-	-	-		F070+	
	020	TF	OSMAM	-	021°	031.4°T	23.7		A2300+	K240-
	030	TF	ADKIN	-	021°	031.2°T	5.0		A2300+	
UGMOR 1G RNAV 1 or P-RNAV	010	IF	UGMOR	-	-	-	-		F100+	
	020	TF	ADKIN	-	304°	314.2°T	15.4		A2300+	
	-									
UPEDU 1G RNAV 1 or P-RNAV	010	IF	UPEDU	-	-	-	-		F100+	
	020	TF	NIDMI	-	171°	181.4°T	12.3	L		
	030	TF	RUXOK	-	132°	141.8°T	14.0	R	A2300+	K240-
	040	TF	ADKIN	-	201°	211.4°T	5.0		A2300+	
XEVAP 1G RNAV 1 or P-RNAV	010	IF	XEVAP	-	-	-	-		F070+	
	020	TF	OSMAM	-	087°	096.6°T	33.6	L	A2300+	K240-
	030	TF	ADKIN	-	021°	031.2°T	5.0		A2300+	

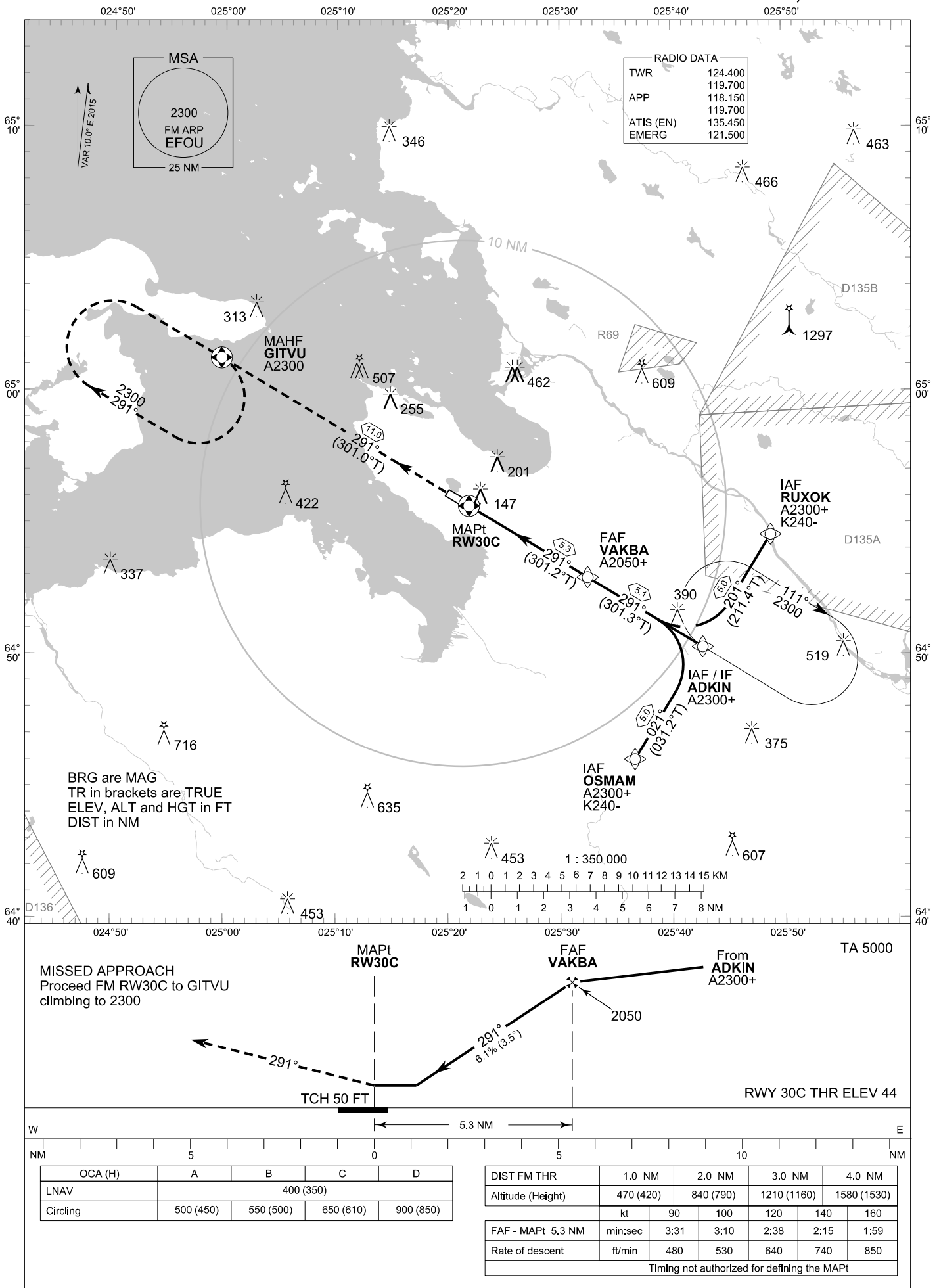
RNAV Holdings							
ID	INBD TR	INBD MAG	Turn Direction	MAX IAS	MNM HLDG LVL	TIME	DIST NM
ADKIN	301.0°T	291°	Right	230 KT	A2300	1 MIN	-

WPT COORD
SEE PAGE EFOU AD 2.15 - 1

**INSTRUMENT  
APPROACH CHART - ICAO**

ELEV 48 FT  
HEIGHTS RELATED TO  
AERODROME ELEV

RNAV (GNSS) RWY 30C  
OULU AERODROME  
OULU, FINLAND



EFOU RNAV (GNSS) RWY 30C										
PROC ID NAV SPEC	SEQ NR	P/T	WPT			MAG GEO TR	DIST NM	Turn Direction	Constraints	
			ID	Type	Flyover				LVL	Speed
R30C OSMAM RNP APCH	005	IF	OSMAM	IAF	-	021°	5.0	L	A2300+	K240-
	010	TF	ADKIN	IF	-	031.2°T			291°	A2300+
	020	TF	VAKBA	FAF	-	301.3°T	5.1		A2050+	
	030	TF	RW30C	MAPt	Y	291°	5.3			
	040	TF	GITVU	MAHF	Y	301.2°T	11.0			
					301.0°T			A2300		

EFOU RNAV (GNSS) RWY 30C										
PROC ID NAV SPEC	SEQ NR	P/T	WPT			MAG GEO TR	DIST NM	Turn Direction	Constraints	
			ID	Type	Flyover				LVL	Speed
R30C ADKIN RNP APCH	010	IF	ADKIN	IAF/IF	-	291°	5.1		A2300+	
	020	TF	VAKBA	FAF	-	301.3°T			291°	A2050+
	030	TF	RW30C	MAPt	Y	301.2°T	5.3			
	040	TF	GITVU	MAHF	Y	291°	11.0			
					301.0°T			A2300		

EFOU RNAV (GNSS) RWY 30C										
PROC ID NAV SPEC	SEQ NR	P/T	WPT			MAG GEO TR	DIST NM	Turn Direction	Constraints	
			ID	Type	Flyover				LVL	Speed
R30C RUXOK RNP APCH	005	IF	RUXOK	IAF	-	201°	5.0	R	A2300+	K240-
	010	TF	ADKIN	IF	-	211.4°T			291°	A2300+
	020	TF	VAKBA	FAF	-	301.3°T	5.1		A2050+	
	030	TF	RW30C	MAPt	Y	291°	5.3			
	040	TF	GITVU	MAHF	Y	301.2°T	11.0			
					301.0°T			A2300		

RNAV Holdings							
ID	INBD TR	INBD MAG	Turn Direction	MAX IAS	MNM HLDG LVL	TIME	DIST NM
ADKIN	301.0°T	291°	Right	230 KT	A2300	1 MIN	-
GITVU	121.0°T	111°	Right	230 KT	A2300	1 MIN	-

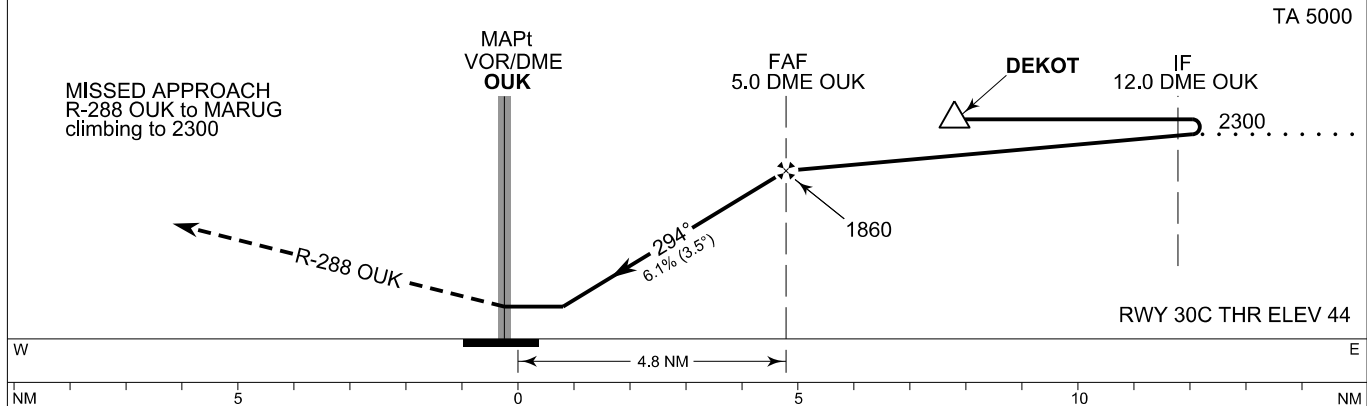
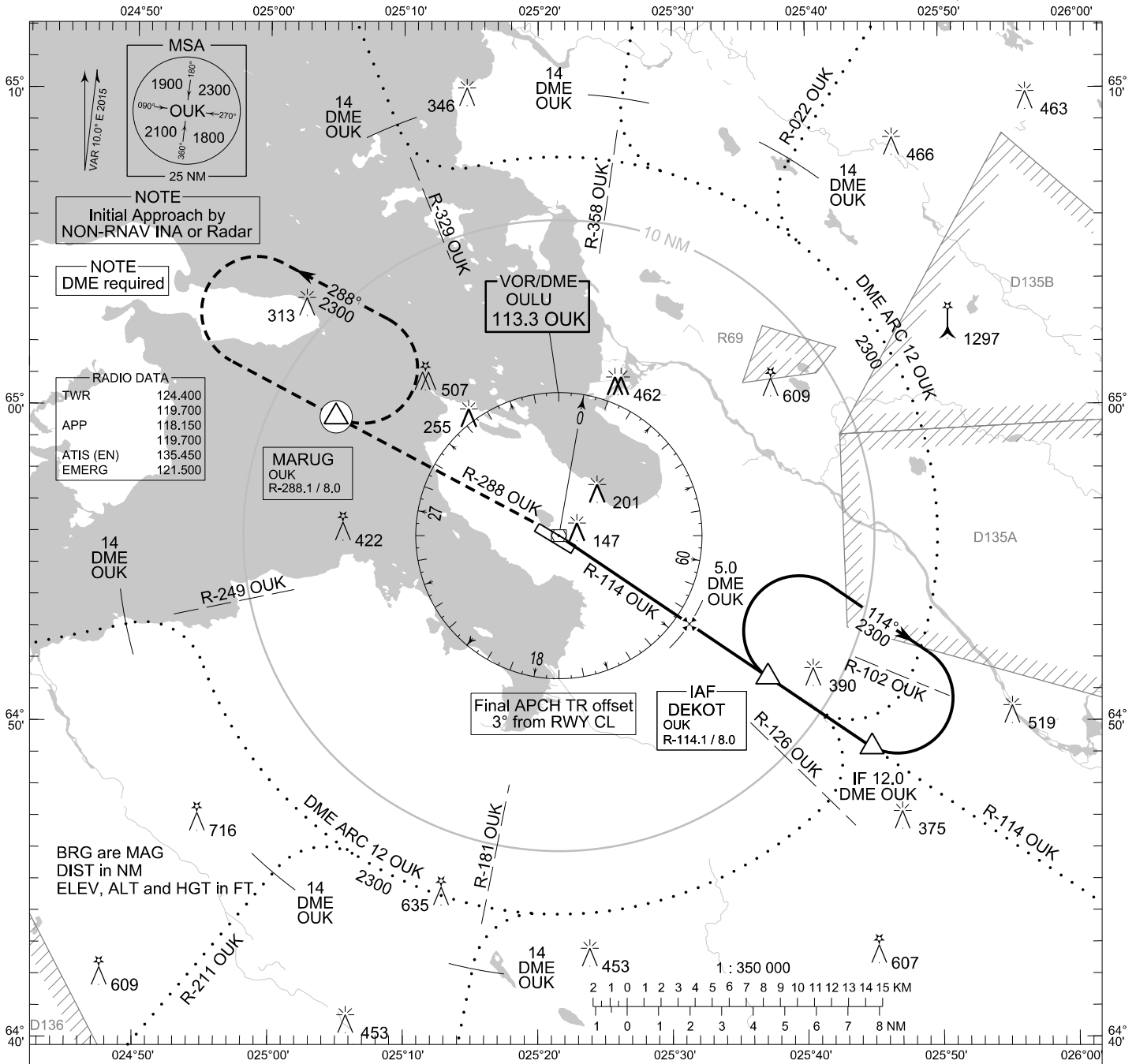
WPT COORD	
ID	COORD
OSMAM	644602.32N 0253637.67E
RUXOK	645433.16N 0254848.00E
ADKIN	645017.87N 0254241.88E
VAKBA	645256.42N 0253227.51E
RW30C	645539.08N 0252152.27E
GITVU	650115.46N 0245942.20E

FINAL APPROACH PARAMETERS			
LNAV Gradient	Baro-VNAV		TCH
	VPA	MNM T	
6.12 % (3.50°)	NIL		50 FT

**INSTRUMENT  
APPROACH CHART - ICAO**

ELEV 48 FT  
HEIGHTS RELATED TO  
AERODROME ELEV

**VOR RWY 30C  
OULU AERODROME  
OULU, FINLAND**



OCA (H)	A	B	C	D
VOR	400 (350)			
Circling	500 (450)	550 (500)	650 (610)	900 (850)

Final Approach DIST	2.0 DME	3.0 DME	4.0 DME			
Altitude (Height)	750 (700)	1120 (1070)	1490 (1440)			
	kt	90	100	120	140	160
FAF - MAPt 5.0 NM	min:sec	3:20	3:00	2:30	2:09	1:52
Rate of descent	ft/min	560	620	740	870	990

Timing not authorized for defining the MAPt