

AIP SUPPLEMENT - SUOMI / FINLAND

Aeronautical Information Service

ais.fi

FINAVIA, P.O. Box 50, FI-01531 VANTAA, ais@finavia.fi

AIP SUP NR

33 / 2017

AIRAC

WEF

27 APR 2017

OULUN LENTOASEMA, LENTOMENETELMÄT AJALLA 27.4. - 20.7.2017

Julkaisupäivä 16.3.2017

REF AIP SUP 30/2017

Alla luetellut lentomenetelmät on julkaistu ajalle **27.4. - 20.7.2017** tämän Supplementin liitteinä.

OULU AERODROME, INSTRUMENT APPROACH PROCEDURES FROM 27 APR TO 20 JUL 2017

Publication date 16 MAR 2017

REF AIP SUP 30/2017

The instrument approach procedures listed below have been published **for the period of 27 APR - 20 JUL 2017** as Appendices to this Supplement.

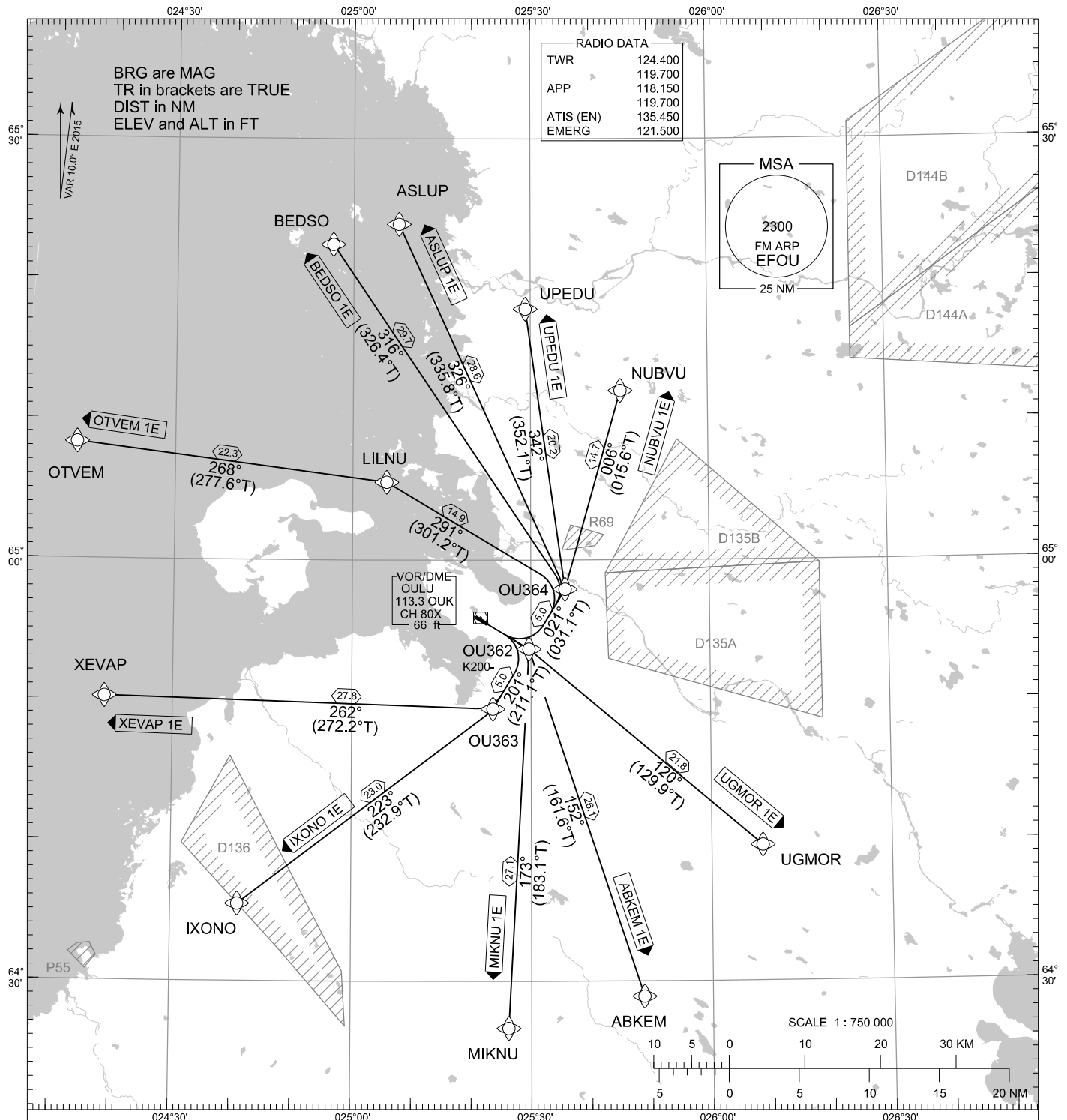
LIITTEET / APPENDICES:

1. EFOU RNAV SID RWY 12C
2. EFOU RNAV STAR RWY 12C
3. EFOU RNAV (GNSS) RWY 12C
4. EFOU VOR RWY 12C

STANDARD DEPARTURE CHART
INSTRUMENT (SID) - ICAO

TRANSITION ALT
5000

RNAV^(GNSS) SID RWY 12C
OULU AERODROME
OULU, FINLAND



RNAV SID RWY 12C

ABKEM 1E ASLUP 1E BEDSO 1E IXONO 1E MIKNU 1E NUBVU 1E OTVEM 1E UGMOR 1E UPEDU 1E XEVAP 1E

NAV SPECIFICATION: RNAV 1 OR P-RNAV APPROVAL REQUIRED. OTHERWISE ADVISE ATC

DME/DME OPS: NOT SUPPORTED

ROUTES: RNAV PROC CODING ON THE VERSO OF THE CHART

SQUAWK: WHEN LINING UP SQUAWK THE ASSIGNED CODE

INITIAL CLIMB: MNM TURNING ALT ACCORDING TO RTE CODING. CLOSE-IN OBSTACLES EXIST, SEE EFOU AD 2.10 - 5

NOISE ABATEMENT: AFTER TAKE-OFF CLIMB AS RAPIDLY AS POSSIBLE TO AT LEAST 2000 FT
PUBLISHED SID ROUTES ARE ALSO MINIMUM NOISE ROUTINGS

AREA MNM ALT: SEE AMA INDEX, AIP ENR 6.1 - 3

EFOU RNAV SID RWY 12C										
RTE NAV SPEC	SEQ NR	P/T	WPT		MAG	GEO TR	DIST NM	Turn Direction	Constraints	
			ID	Flyover					LVL	Speed
ABKEM 1E RNAV 1 or P-RNAV	010	CA	-	-	111°	121.0°T	-		A430+	
	020	DF	OU362	-	-	-	-			K200-
	030	TF	ABKEM	-	152°	161.6°T	26.1			
ASLUP 1E RNAV 1 or P-RNAV	010	CA	-	-	111°	121.0°T	-		A430+	
	020	DF	OU362	-	-	-	-			K200-
	030	TF	OU364	-	021°	031.1°T	5.0	L		
	040	TF	ASLUP	-	326°	335.8°T	28.6			
BEDSO 1E RNAV 1 or P-RNAV	010	CA	-	-	111°	121.0°T	-		A430+	
	020	DF	OU362	-	-	-	-			K200-
	030	TF	OU364	-	021°	031.1°T	5.0	L		
	040	TF	BEDSO	-	316°	326.4°T	29.7			
IXONO 1E RNAV 1 or P-RNAV	010	CA	-	-	111°	121.0°T	-		A430+	
	020	DF	OU362	-	-	-	-			K200-
	030	TF	OU363	-	201°	211.1°T	5.0			
	040	TF	IXONO	-	223°	232.9°T	23.0			
MIKNU 1E RNAV 1 or P-RNAV	010	CA	-	-	111°	121.0°T	-		A430+	
	020	DF	OU362	-	-	-	-			K200-
	030	TF	MIKNU	-	173°	183.1°T	27.1			
NUBVU 1E RNAV 1 or P-RNAV	010	CA	-	-	111°	121.0°T	-		A430+	
	020	DF	OU362	-	-	-	-			K200-
	030	TF	OU364	-	021°	031.1°T	5.0			
	040	TF	NUBVU	-	006°	015.6°T	14.7			
OTVEM 1E RNAV 1 or P-RNAV	010	CA	-	-	111°	121.0°T	-		A430+	
	020	DF	OU362	-	-	-	-			K200-
	030	TF	OU364	-	021°	031.1°T	5.0	L		
	040	TF	LILNU	-	291°	301.2°T	14.9			
	050	TF	OTVEM	-	268°	277.6°T	22.3			
UGMOR 1E RNAV 1 or P-RNAV	010	CA	-	-	111°	121.0°T	-		A430+	
	020	DF	OU362	-	-	-	-			K200-
	030	TF	UGMOR	-	120°	129.9°T	21.8			
UPEDU 1E RNAV 1 or P-RNAV	010	CA	-	-	111°	121.0°T	-		A430+	
	020	DF	OU362	-	-	-	-			K200-
	030	TF	OU364	-	021°	031.1°T	5.0	L		
	040	TF	UPEDU	-	342°	352.1°T	20.2			
XEVAP 1E RNAV 1 or P-RNAV	010	CA	-	-	111°	121.0°T	-		A430+	
	020	DF	OU362	-	-	-	-			K200-
	030	TF	OU363	-	201°	211.1°T	5.0	R		
	040	TF	XEVAP	-	262°	272.2°T	27.8			

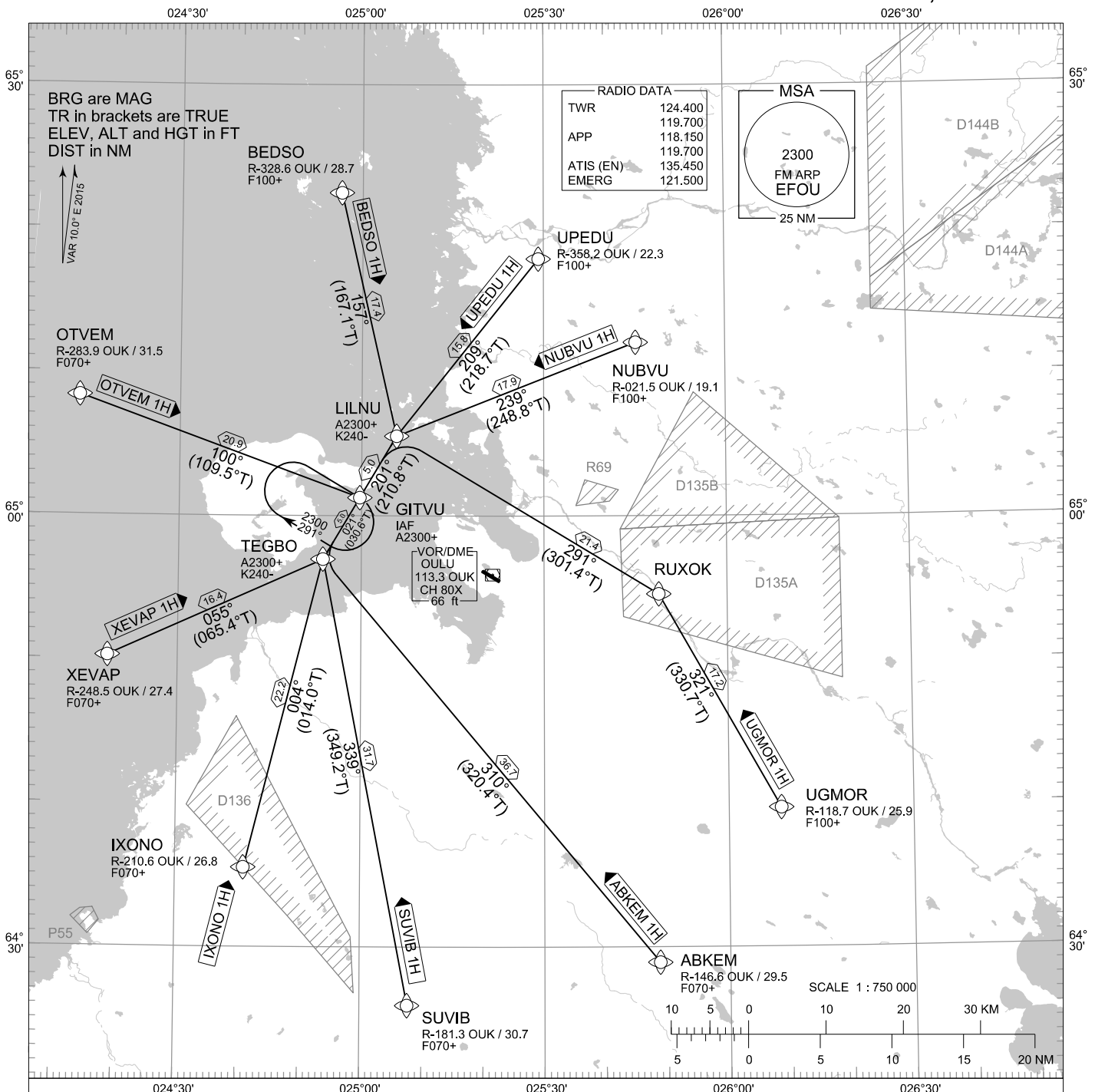
WPT COORD

SEE PAGE EFOU AD 2.15 - 1

STANDARD ARRIVAL CHART
INSTRUMENT (STAR) - ICAO

TRANSITION ALT
5000

RNAV (GNSS) STAR RWY 12C
OULU AERODROME
OULU, FINLAND



RNAV STAR RWY 12C

ABKEM 1H BEDSO 1H IXONO 1H NUBVU 1H OTVEM 1H SUVIB 1H UGMOR 1H UPEDU 1H XEVAP 1H

NAV SPECIFICATION: RNAV 1 OR P-RNAV APPROVAL REQUIRED. OTHERWISE ADVISE ATC

DME/DME OPS: NOT SUPPORTED

ROUTES: RNAV PROC CODING ON THE VERSO OF THE CHART
ATC WILL GIVE DESCENT CLEARANCES

WPT CONSTRAINTS: ALT / FL / SPEED CONSTRAINTS MUST ALWAYS BE FOLLOWED AS
PUBLISHED UNLESS EXPLICITLY CANCELLED BY ATC

CD OPS: BY ATC CLR IF TFC PERMITS. PLAN CD PATH ACCORDING TO STAR

NOISE ABATEMENT: AVOID OVERFLYING THE CITY OF OULU BELOW 2000

RCF: SELECT TRANSPONDER CODE 7600

RNAV STAR HAS BEEN GIVEN AND ACKNOWLEDGED: FOLLOW THE
STAR TO THE RESPECTIVE RWY AND EXECUTE IAP AND LAND

DURING RADAR VECTORING BEFORE IAF: IN ACCORDANCE WITH
THE RULES OF THE AIR

AREA MNM ALT: SEE AMA INDEX, AIP ENR 6.1-3

EFOU RNAV STAR RWY 12C										
RTE NAV SPEC	SEQ NR	P/T	WPT		MAG	GEO TR	DIST NM	Turn Direction	Constraints	
			ID	Flyover					LVL	Speed
ABKEM 1H RNAV 1 or P-RNAV	010	IF	ABKEM	-	-	-	-		F070+	
	020	TF	TEGBO	-	310°	320.4°T	36.7	R	A2300+	K240-
	030	TF	GITVU	-	021°	030.6°T	5.0		A2300+	
BEDSO 1H RNAV 1 or P-RNAV	010	IF	BEDSO	-	-	-	-		F100+	
	020	TF	LILNU	-	157°	167.1°T	17.4	R	A2300+	K240-
	030	TF	GITVU	-	201°	210.8°T	5.0		A2300+	
IXONO 1H RNAV 1 or P-RNAV	010	IF	IXONO	-	-	-	-		F070+	
	020	TF	TEGBO	-	004°	014.0°T	22.2		A2300+	K240-
	030	TF	GITVU	-	021°	030.6°T	5.0		A2300+	
NUBVU 1H RNAV 1 or P-RNAV	010	IF	NUBVU	-	-	-	-		F100+	
	020	TF	LILNU	-	239°	248.8°T	17.9	L	A2300+	K240-
	030	TF	GITVU	-	201°	210.8°T	5.0		A2300+	
OTVEM 1H RNAV 1 or P-RNAV	010	IF	OTVEM	-	-	-	-		F070+	
	020	TF	GITVU	-	100°	109.5°T	20.9		A2300+	
	-									
SUVIB 1H RNAV 1 or P-RNAV	010	IF	SUVIB	-	-	-	-		F070+	
	020	TF	TEGBO	-	339°	349.2°T	31.7	R	A2300+	K240-
	030	TF	GITVU	-	021°	030.6°T	5.0		A2300+	
UGMOR 1H RNAV 1 or P-RNAV	010	IF	UGMOR	-	-	-	-		F100+	
	020	TF	RUXOK	-	321°	330.7°T	17.2	L		
	030	TF	LILNU	-	291°	301.4°T	21.4	L	A2300+	K240-
	040	TF	GITVU	-	201°	210.8°T	5.0		A2300+	
UPEDU 1H RNAV 1 or P-RNAV	010	IF	UPEDU	-	-	-	-		F100+	
	020	TF	LILNU	-	209°	218.7°T	15.8		A2300+	K240-
	030	TF	GITVU	-	201°	210.8°T	5.0		A2300+	
XEVA1P 1H RNAV 1 or P-RNAV	010	IF	XEVA1P	-	-	-	-		F070+	
	020	TF	TEGBO	-	055°	065.4°T	16.4	L	A2300+	K240-
	030	TF	GITVU	-	021°	030.6°T	5.0		A2300+	

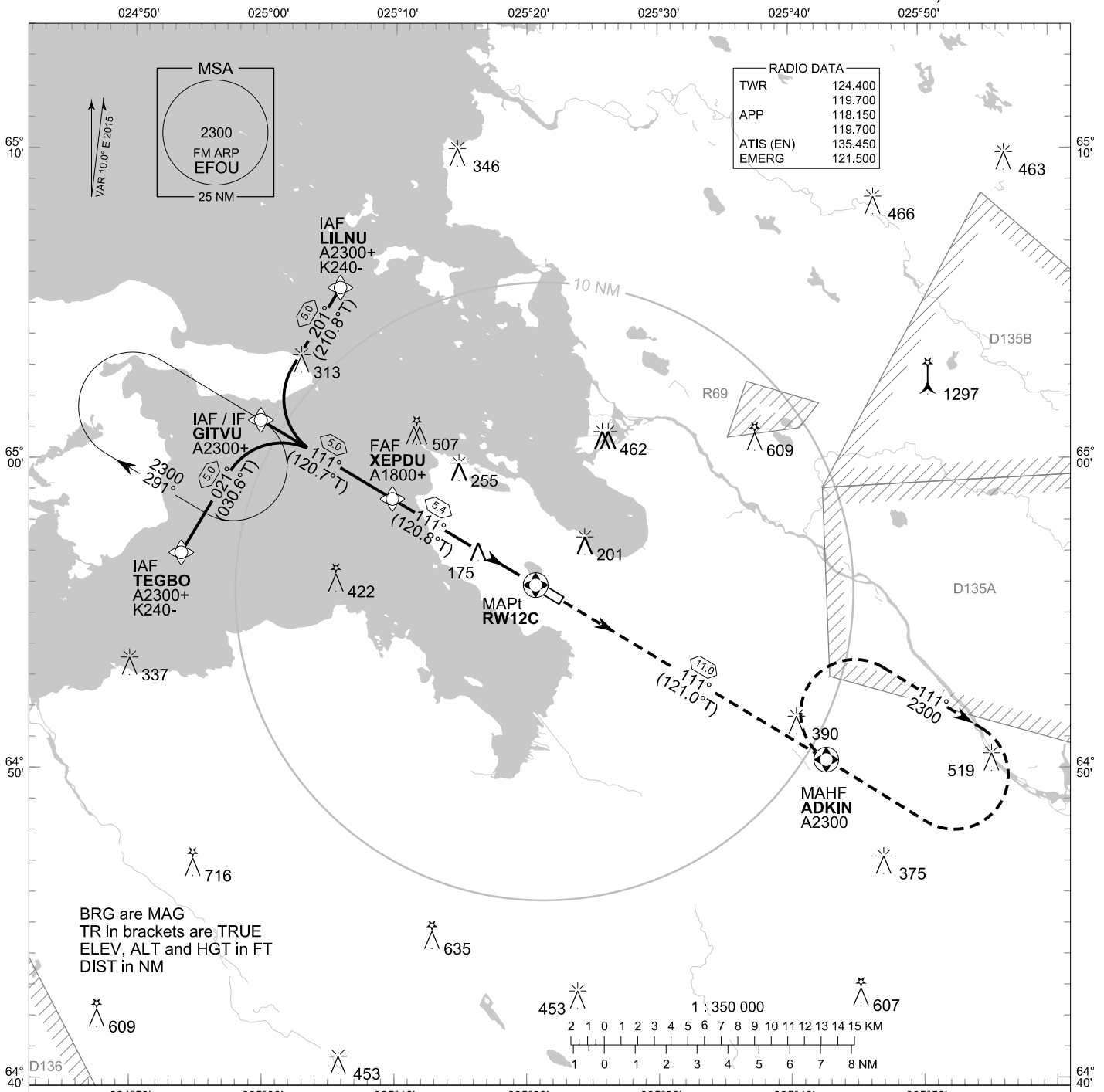
RNAV Holdings							
ID	INBD TR	INBD MAG	Turn Direction	MAX IAS	MNM HLDG LVL	TIME	DIST NM
GITVU	121.0°T	111°	Right	230 KT	A2300	1 MIN	-

WPT COORD
SEE PAGE EFOU AD 2.15 - 1

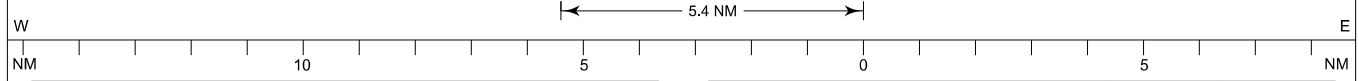
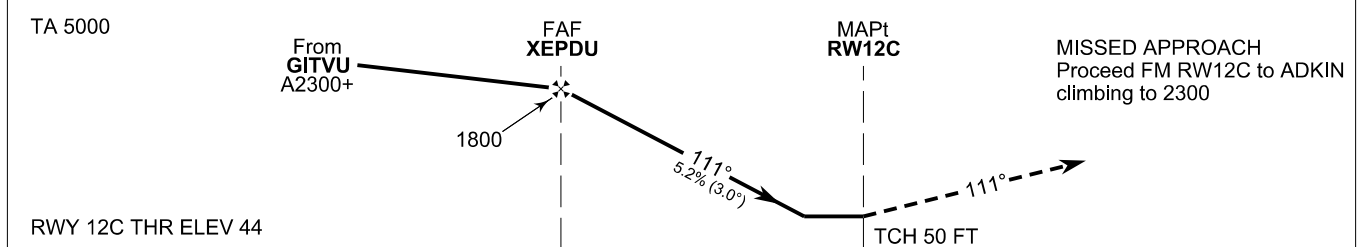
**INSTRUMENT
APPROACH CHART - ICAO**

ELEV 48 FT
HEIGHTS RELATED TO
AERODROME ELEV

RNAV (GNSS) RWY 12C
OULU AERODROME
OULU, FINLAND



BRG are MAG
TR in brackets are TRUE
ELEV, ALT and HGT in FT
DIST in NM



OCA (H)	A	B	C	D
LNAV	430 (380)			
Circling	500 (450)	550 (500)	650 (610)	900 (850)

DIST FM THR	5.0 NM	4.0 NM	3.0 NM	2.0 NM		
Altitude (Height)	1680 (1640)	1370 (1320)	1050 (1000)	730 (680)		
FAF - MAPt 5.4 NM	kt	90	100	120	140	160
Rate of descent	min:sec	3:37	3:15	2:42	2:19	2:02
	ft/min	480	530	640	740	850

Timing not authorized for defining the MAPt

EFOU RNAV (GNSS) RWY 12C										
PROC ID NAV SPEC	SEQ NR	P/T	WPT			MAG GEO TR	DIST NM	Turn Direction	Constraints	
			ID	Type	Flyover				LVL	Speed
R12C LILNU RNP APCH	005	IF	LILNU	IAF	-	201°	5.0	L	A2300+	K240-
	010	TF	GITVU	IF	-	210.8°T			A2300+	
	020	TF	XEPDU	FAF	-	111°	5.0		A1800+	
	030	TF	RW12C	MAPt	Y	120.7°T	5.4			
	040	TF	ADKIN	MAHF	Y	111°		11.0		A2300

EFOU RNAV (GNSS) RWY 12C										
PROC ID NAV SPEC	SEQ NR	P/T	WPT			MAG GEO TR	DIST NM	Turn Direction	Constraints	
			ID	Type	Flyover				LVL	Speed
R12C GITVU RNP APCH	010	IF	GITVU	IAF/IF	-	111°	5.0		A2300+	
	020	TF	XEPDU	FAF	-	120.7°T		A1800+		
	030	TF	RW12C	MAPt	Y	111°	5.4			
	040	TF	ADKIN	MAHF	Y	120.8°T	11.0		A2300	

EFOU RNAV (GNSS) RWY 12C										
PROC ID NAV SPEC	SEQ NR	P/T	WPT			MAG GEO TR	DIST NM	Turn Direction	Constraints	
			ID	Type	Flyover				LVL	Speed
R12C TEGBO RNP APCH	005	IF	TEGBO	IAF	-	021°	5.0	R	A2300+	K240-
	010	TF	GITVU	IF	-	030.6°T			A2300+	
	020	TF	XEPDU	FAF	-	111°	5.0		A1800+	
	030	TF	RW12C	MAPt	Y	120.7°T	5.4			
	040	TF	ADKIN	MAHF	Y	111°		11.0		A2300

RNAV Holdings							
ID	INBD TR	INBD MAG	Turn Direction	MAX IAS	MNM HLDG LVL	TIME	DIST NM
GITVU	121.0°T	111°	Right	230 KT	A2300	1 MIN	-
ADKIN	301.0°T	291°	Right	230 KT	A2300	1 MIN	-

WPT COORD	
ID	COORD
LILNU	650532.50N 0250543.96E
TEGBO	645658.18N 0245342.38E
GITVU	650115.46N 0245942.20E
XEPDU	645843.63N 0250945.32E
RW12C	645557.35N 0252040.59E
ADKIN	645017.87N 0254241.88E

FINAL APPROACH PARAMETERS			
LNAV Gradient	Baro-VNAV		TCH
	VPA	MNM T	
5.24 % (3.00°)	NIL		50 FT

