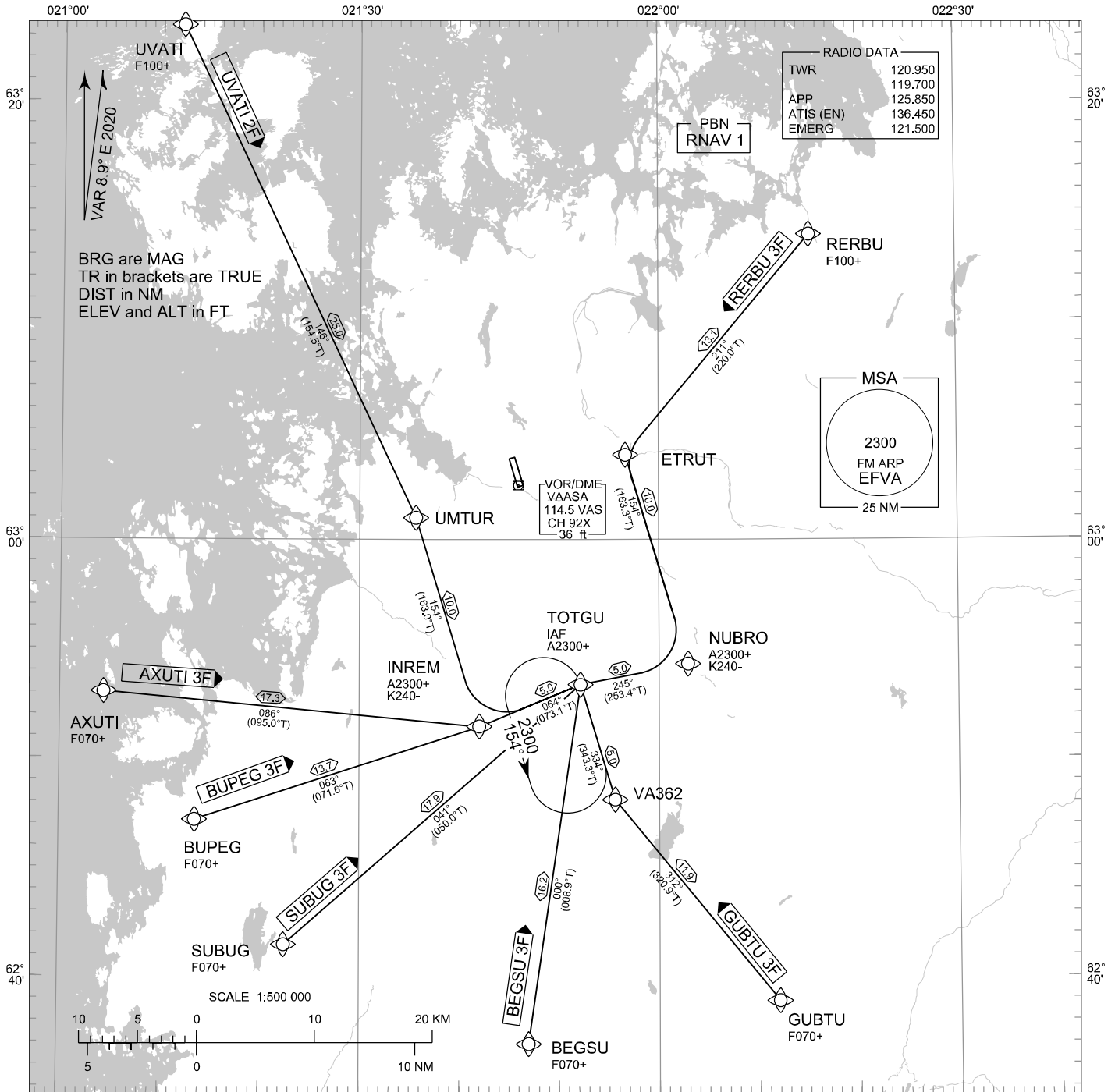


STANDARD ARRIVAL CHART
INSTRUMENT (STAR) - ICAO

TRANSITION ALT
5000

RNAV (GNSS) STAR RWY 34
VAASA AERODROME
VAASA, FINLAND



RNAV STAR RWY 34

AXUTI 3F BEGSU 3F BUPEG 3F GUBTU 3F RERBU 3F SUBUG 3F UVATI 2F

RCF: SELECT TRANSPONDER CODE 7600

DME/DME OPS: NOT SUPPORTED

RNAV STAR HAS BEEN GIVEN AND ACKNOWLEDGED:
FOLLOW THE STAR TO THE RESPECTIVE RWY AND
EXECUTE IAP AND LAND

ROUTES: RNAV PROC CODING ON THE VERSO OF THE CHART
ATC WILL GIVE DESCENT CLEARANCES

WPT CONSTRAINTS: ALT / FL / SPEED CONSTRAINTS MUST ALWAYS BE FOLLOWED AS
PUBLISHED UNLESS EXPLICITLY CANCELLED BY ATC

DURING RADAR VECTORED BEFORE IAF:
IN ACCORDANCE WITH THE RULES OF THE AIR

CD OPS: BY ATC CLR IF TFC PERMITS. PLAN CD PATH ACCORDING TO STAR

AREA MNM ALT: SEE AMA INDEX, AIP ENR 6.1 - 3

NOISE ABATEMENT: AVOID OVERFLYING THE CITY OF VAASA BELOW 2000

CHG: MAG VAR, PBN

EFVA RNAV STAR RWY 34										
RTE NAV SPEC	SEQ NR	P/T	WPT		MAG	GEO TR	DIST NM	Turn Direction	Constraints	
			ID	Flyover					LVL	Speed
AXUTI 3F RNAV 1	010	IF	AXUTI	-	-	-	-		F070+	
	020	TF	INREM	-	086°	095.0°T	17.3		A2300+	K240-
	030	TF	TOTGU	-	064°	073.1°T	5.0		A2300+	

BEGSU 3F RNAV 1	010	IF	BEGSU	-	-	-	-		F070+	
	020	TF	TOTGU	-	000°	008.9°T	16.2		A2300+	

BUPEG 3F RNAV 1	010	IF	BUPEG	-	-	-	-		F070+	
	020	TF	INREM	-	063°	071.6°T	13.7		A2300+	K240-
	030	TF	TOTGU	-	064°	073.1°T	5.0		A2300+	

GUBTU 3F RNAV 1	010	IF	GUBTU	-	-	-	-		F070+	
	020	TF	VA362	-	312°	320.9°T	11.9			
	030	TF	TOTGU	-	334°	343.3°T	5.0		A2300+	

RERBU 3F RNAV 1	010	IF	RERBU	-	-	-	-		F100+	
	020	TF	ETRUT	-	211°	220.0°T	13.1	L		
	030	TF	NUBRO	-	154°	163.3°T	10.0	R	A2300+	K240-
	040	TF	TOTGU	-	245°	253.4°T	5.0		A2300+	

SUBUG 3F RNAV 1	010	IF	SUBUG	-	-	-	-		F070+	
	020	TF	TOTGU	-	041°	050.0°T	17.9		A2300+	

UVATI 2F RNAV 1	010	IF	UVATI	-	-	-	-		F100+	
	020	TF	UMTUR	-	146°	154.5°T	25.0			
	030	TF	INREM	-	154°	163.0°T	10.0	L	A2300+	K240-
	040	TF	TOTGU	-	064°	073.1°T	5.0		A2300+	

RNAV Holdings								
ID	INBD TR	INBD MAG	Turn Direction	Speed	MNM HLDG LVL	TIME	DIST NM	
TOTGU	343.2°T	334°	Left	K230-	A2300	1 MIN	-	

WPT COORD
SEE PAGE EFVA AD 2.15 - 1