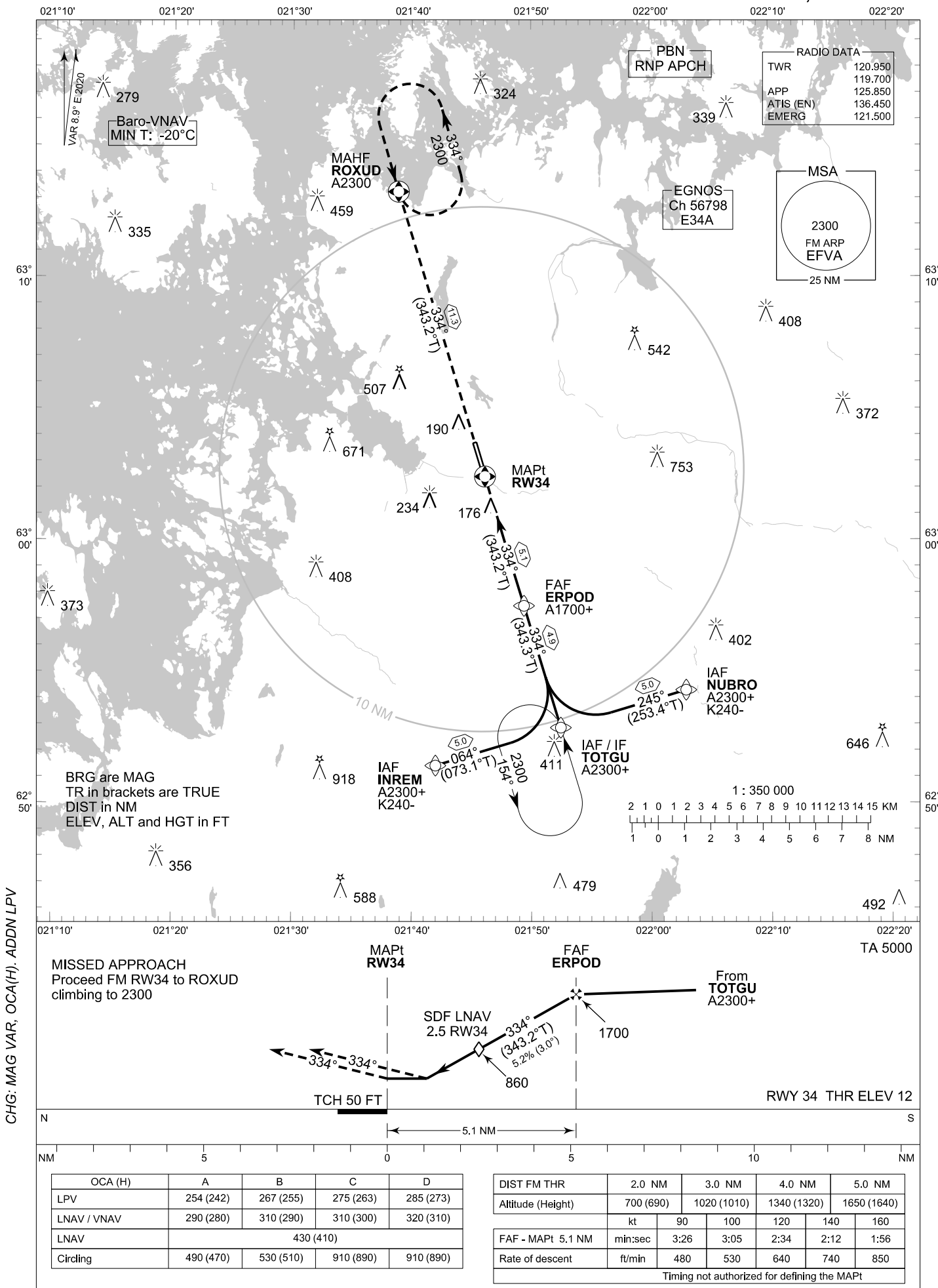


**INSTRUMENT
APPROACH CHART - ICAO**

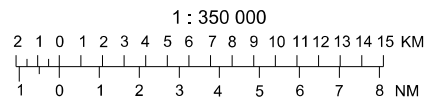
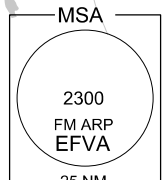
ELEV 21 FT
HEIGHTS RELATED TO
THR RWY 34 ELEV 12 FT

**RNP RWY 34
VAASA AERODROME
VAASA, FINLAND**

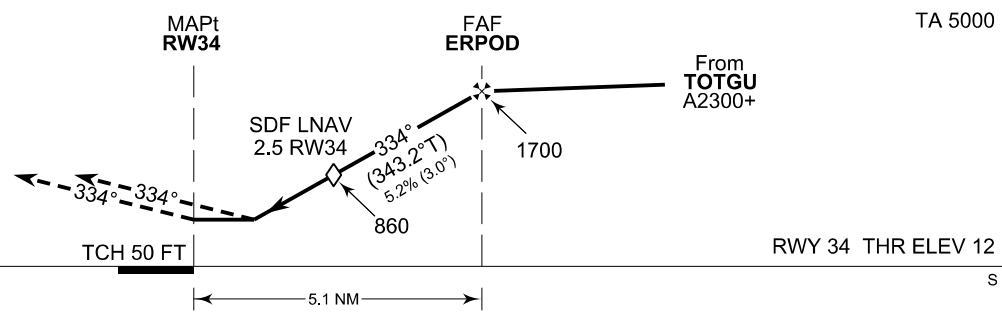


RADIO DATA

TWR	120.950
APP	119.700
ATIS (EN)	125.850
EMERG	136.450
	121.500



MISSED APPROACH
Proceed FM RW34 to ROXUD
climbing to 2300



OCA (H)	A	B	C	D
LPV	254 (242)	267 (255)	275 (263)	285 (273)
LNAV / VNAV	290 (280)	310 (290)	310 (300)	320 (310)
LNAV	430 (410)			
Circling	490 (470)	530 (510)	910 (890)	910 (890)

DIST FM THR	2.0 NM	3.0 NM	4.0 NM	5.0 NM		
Altitude (Height)	700 (690)	1020 (1010)	1340 (1320)	1650 (1640)		
	kt	90	100	120	140	160
FAF - MAPt 5.1 NM	min:sec	3:26	3:05	2:34	2:12	1:56
Rate of descent	ft/min	480	530	640	740	850

Timing not authorized for defining the MAPt

EFVA RNP RWY 34										
PROC ID NAV SPEC	SEQ NR	P/T	WPT			MAG GEO TR	DIST NM	Turn Direction	Constraints	
			ID	Type	Flyover				LVL	Speed
H34 INREM RNP APCH	005	IF	INREM	IAF	-	064° 073.1°T	5.0	L	A2300+	K240-
	010	TF	TOTGU	IF	-	334° 343.3°T	4.9		A2300+	
	020	TF	ERPOD	FAF	-	334° 343.2°T	5.1		A1700+	
	030	TF	RW34	MAPt	Y	334° 343.2°T	11.3			
	040	TF	ROXUD	MAHF	Y				A2300	

EFVA RNP RWY 34										
PROC ID NAV SPEC	SEQ NR	P/T	WPT			MAG GEO TR	DIST NM	Turn Direction	Constraints	
			ID	Type	Flyover				LVL	Speed
H34 TOTGU RNP APCH	010	IF	TOTGU	IAF/IF	-	334° 343.3°T	4.9		A2300+	
	020	TF	ERPOD	FAF	-	334° 343.2°T	5.1		A1700+	
	030	TF	RW34	MAPt	Y	334° 343.2°T	11.3			
	040	TF	ROXUD	MAHF	Y				A2300	

EFVA RNP RWY 34										
PROC ID NAV SPEC	SEQ NR	P/T	WPT			MAG GEO TR	DIST NM	Turn Direction	Constraints	
			ID	Type	Flyover				LVL	Speed
H34 NUBRO RNP APCH	005	IF	NUBRO	IAF	-	245° 253.4°T	5.0	R	A2300+	K240-
	010	TF	TOTGU	IF	-	334° 343.3°T	4.9		A2300+	
	020	TF	ERPOD	FAF	-	334° 343.2°T	5.1		A1700+	
	030	TF	RW34	MAPt	Y	334° 343.2°T	11.3			
	040	TF	ROXUD	MAHF	Y				A2300	

RNAV Holdings							
ID	INBD TR	INBD MAG	Turn Direction	Speed	MNM HLDG LVL	TIME	DIST NM
TOTGU	343.2°T	334°	Left	K230-	A2300	1 MIN	-
ROXUD	163.2°T	154°	Left	K230-	A2300	1 MIN	-

WPT COORD
SEE PAGE EFVA AD 2.15 - 1

FINAL APPROACH PARAMETERS			
LNAV Gradient	Baro-VNAV		TCH
	VPA	MNM T	
5.24 % (3.00°)	3.00°	-20°C	50 FT

SBAS DATA	
Approach ID	E34A
Service Provider	EGNOS
CRC remainder	8E 84 EE 06
Channel number	56798
Data Block	SEE EFVA AD 2.15 - 9