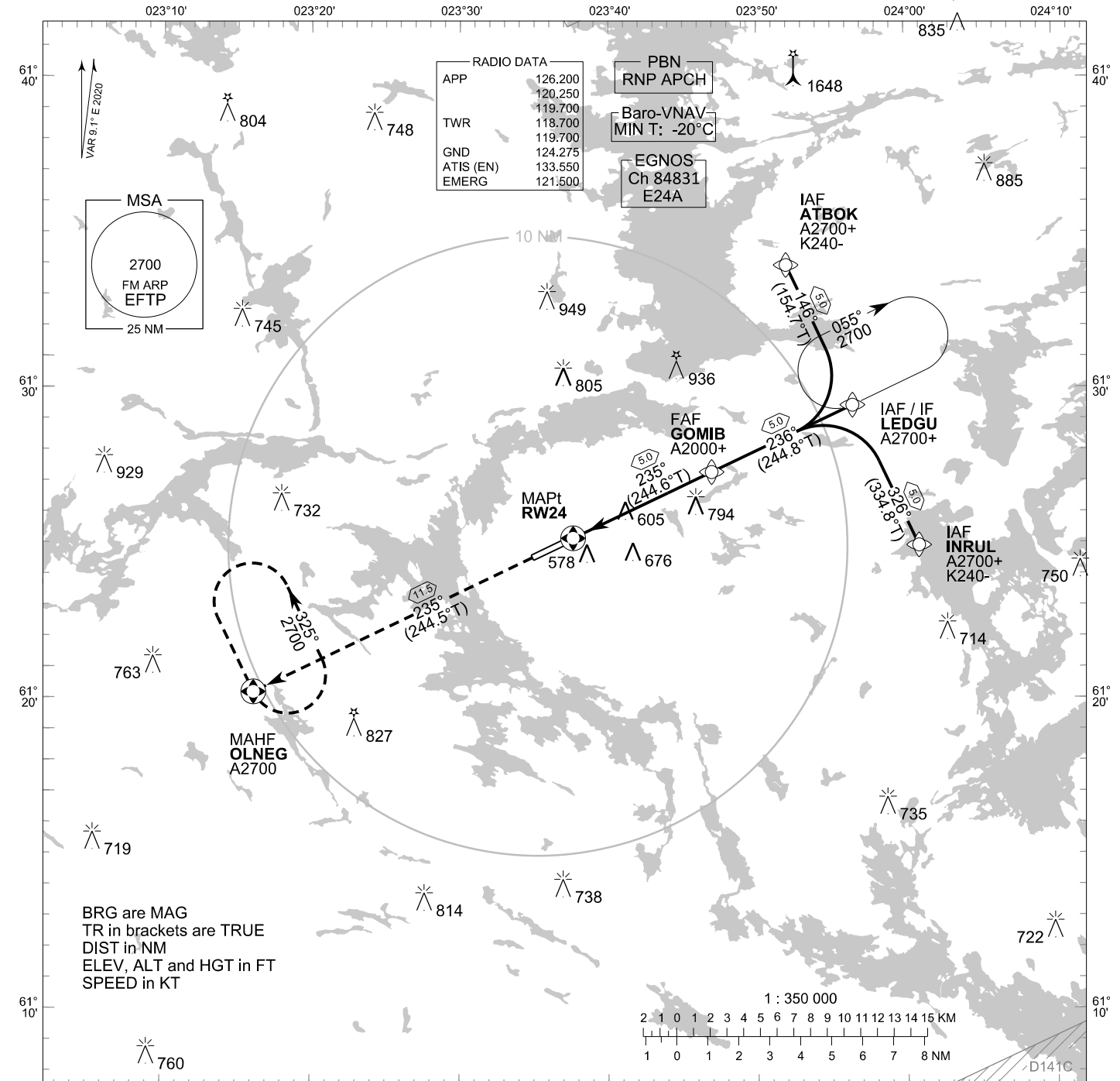


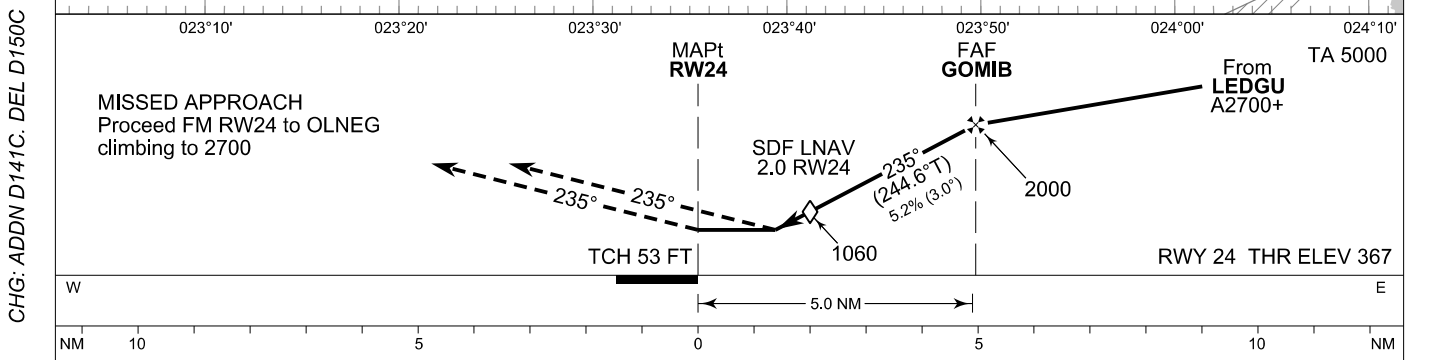
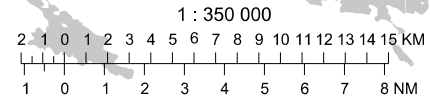
**INSTRUMENT  
APPROACH CHART - ICAO**

ELEV 391 FT  
HEIGHTS RELATED TO  
THR RWY 24 ELEV 367 FT

**RNP RWY 24  
TAMPERE-PIRKKALA AERODROME  
TAMPERE, FINLAND**



BRG are MAG  
TR in brackets are TRUE  
DIST in NM  
ELEV, ALT and HGT in FT  
SPEED in KT



**MISSED APPROACH**  
Proceed FM RW24 to OLNEG  
climbing to 2700

OCA (H)	A	B	C	D
LPV	629 (262)	642 (275)	650 (283)	660 (293)
LNAV/VNAV	686 (319)	698 (331)	706 (339)	717 (350)
LNAV	860 (490)			
Circling	880 (490)	980 (580)	1190 (800)	1200 (810)

DIST FM THR	2.0 NM	3.0 NM	4.0 NM			
Altitude (Height)	1060 (690)	1380 (1010)	1690 (1330)			
FAF - MAPt 5.0 NM	kt	90	100	120	140	160
Rate of descent	ft/min	480	530	640	740	850

Timing not authorized for defining the MAPt

CHG: ADDN D141C. DEL D150C

EFTP RNP RWY 24										
PROC ID NAV SPEC	SEQ NR	P/T	WPT			MAG	GEO TR	DIST NM	Constraints	
			ID	Type	Flyover				LVL	Speed
H24 INRUL RNP APCH	005	IF	INRUL	IAF	-				A2700+	K240-
	010	TF	LEDGU	IF	-	326°	334.8°T	5.0	A2700+	
	020	TF	GOMIB	FAF	-	236°	244.8°T	5.0	A2000+	
	030	TF	RW24	MAPt	Y	235°	244.6°T	5.0		
	040	TF	OLNEG	MAHF	Y	235°	244.5°T	11.5	A2700	

EFTP RNP RWY 24										
PROC ID NAV SPEC	SEQ NR	P/T	WPT			MAG	GEO TR	DIST NM	Constraints	
			ID	Type	Flyover				LVL	Speed
H24 LEDGU RNP APCH	010	IF	LEDGU	IAF/IF	-				A2700+	
	020	TF	GOMIB	FAF	-	236°	244.8°T	5.0	A2000+	
	030	TF	RW24	MAPt	Y	235°	244.6°T	5.0		
	040	TF	OLNEG	MAHF	Y	235°	244.5°T	11.5	A2700	

EFTP RNP RWY 24										
PROC ID NAV SPEC	SEQ NR	P/T	WPT			MAG	GEO TR	DIST NM	Constraints	
			ID	Type	Flyover				LVL	Speed
H24 ATBOK RNP APCH	005	IF	ATBOK	IAF	-				A2700+	K240-
	010	TF	LEDGU	IF	-	146°	154.7°T	5.0	A2700+	
	020	TF	GOMIB	FAF	-	236°	244.8°T	5.0	A2000+	
	030	TF	RW24	MAPt	Y	235°	244.6°T	5.0		
	040	TF	OLNEG	MAHF	Y	235°	244.5°T	11.5	A2700	

RNAV Holdings							
ID	INBD TR	INBD MAG	Turn Direction	Speed	MNM HLDG LVL	TIME	DIST NM
LEDGU	244.5°T	235°	Right	K230-	A2700	1 MIN	-
OLNEG	154.1°T	145°	Left	K230-	A2700	1 MIN	-

WPT COORD
SEE PAGE EFTP AD 2.15 - 1

FINAL APPROACH PARAMETERS			
LNAV Gradient	Baro-VNAV		TCH
	VPA	MNM T	
5.24 % (3.00°)	3.00°	-20°C	53 FT

SBAS DATA	
Approach ID	E24A
Service Provider	EGNOS
CRC remainder	2D 0E E2 E0
Channel number	84831
Data Block	SEE EFTP AD 2.15 - 9