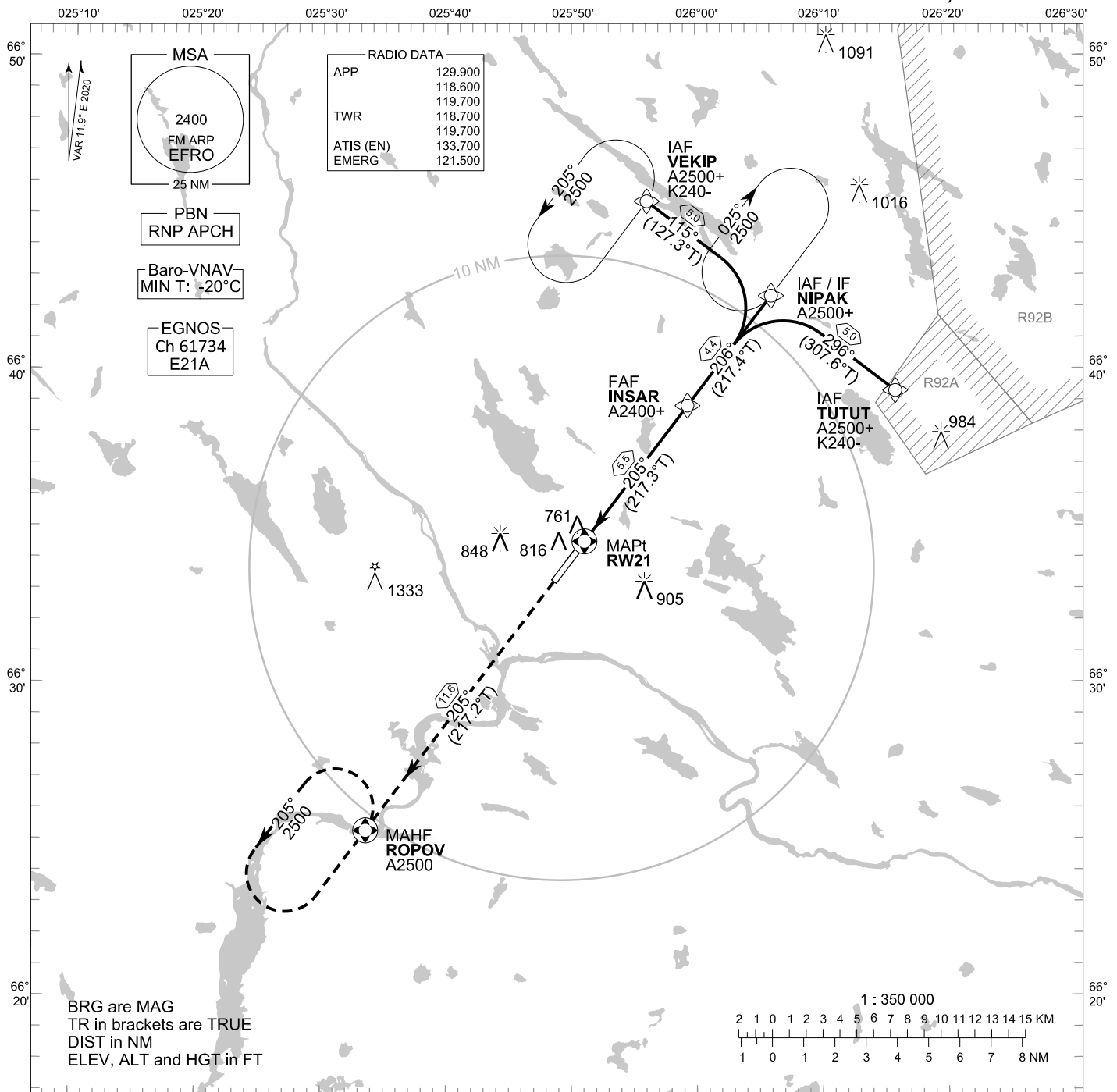


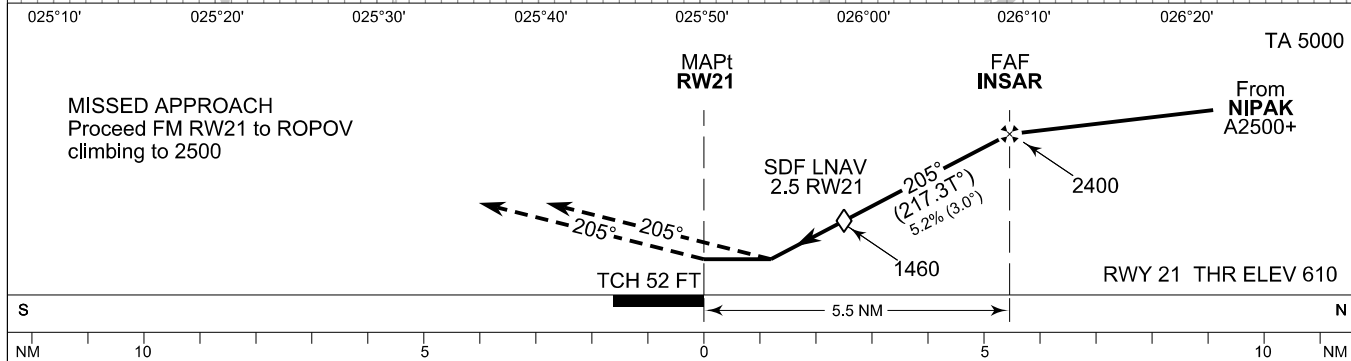
**INSTRUMENT
APPROACH CHART - ICAO**

ELEV 643 FT
HEIGHTS RELATED TO
THR RWY 21 ELEV 610 FT

RNP RWY 21
ROVANIEMI AERODROME
ROVANIEMI, FINLAND



CHG: ADDN LPV



OCA (H)	A	B	C	D
LPV	892 (283)	905 (296)	913 (304)	923 (314)
LNAV/VNAV	858 (249)	871 (262)	892 (283)	930 (321)
LNAV	1010 (400)			
Circling	1120 (470)	1150 (510)	1300 (660)	1340 (690)

DIST FM THR	2.0 NM	3.0 NM	4.0 NM	5.0 NM		
Altitude (Height)	1300 (690)	1620 (1010)	1940 (1330)	2250 (1640)		
	kt	90	100	120	140	160
FAF - MAPt 5.5 NM	min:sec	3:38	3:16	2:44	2:20	2:03
Rate of descent	ft/min	480	530	640	740	850

Timing not authorized for defining the MAPt

EFRO RNP RWY 21										
PROC ID NAV SPEC	SEQ NR	P/T	WPT			MAG GEO TR	DIST NM	Turn Direction	Constraints	
			ID	Type	Flyover				LVL	Speed
H21 TUTUT RNP APCH	005	IF	TUTUT	IAF	-	296° 307.6°T	5.0	L	A2500+	K240-
	010	TF	NIPAK	IF	-	206° 217.4°T	4.4		A2500+	
	020	TF	INSAR	FAF	-	205° 217.3°T	5.5		A2400+	
	030	TF	RW21	MAPt	Y	205° 217.2°T	11.6			
	040	TF	ROPOV	MAHF	Y				A2500	

EFRO RNP RWY 21										
PROC ID NAV SPEC	SEQ NR	P/T	WPT			MAG GEO TR	DIST NM	Turn Direction	Constraints	
			ID	Type	Flyover				LVL	Speed
H21 NIPAK RNP APCH	010	IF	NIPAK	IAF/IF	-	206° 217.4°T	4.4		A2500+	
	020	TF	INSAR	FAF	-	205° 217.3°T	5.5		A2400+	
	030	TF	RW21	MAPt	Y	205° 217.2°T	11.6			
	040	TF	ROPOV	MAHF	Y				A2500	

EFRO RNP RWY 21										
PROC ID NAV SPEC	SEQ NR	P/T	WPT			MAG GEO TR	DIST NM	Turn Direction	Constraints	
			ID	Type	Flyover				LVL	Speed
H21 VEKIP RNP APCH	005	IF	VEKIP	IAF	-	115° 127.3°T	5.0	R	A2500+	K240-
	010	TF	NIPAK	IF	-	206° 217.4°T	4.4		A2500+	
	020	TF	INSAR	FAF	-	205° 217.3°T	5.5		A2400+	
	030	TF	RW21	MAPt	Y	205° 217.2°T	11.6			
	040	TF	ROPOV	MAHF	Y				A2500	

RNAV Holdings							
ID	INBD TR	INBD MAG	Turn Direction	MAX IAS	MNM HLDG LVL	TIME	DIST NM
NIPAK	217.2°T	205°	Right	230 KT	A2500	1 MIN	-
VEKIP	037.1°T	025°	Left	230 KT	A2500	1 MIN	-
ROPOV	037.2°T	025°	Left	230 KT	A2500	1 MIN	-

WPT COORD
SEE PAGE EFRO AD 2.15 - 1

FINAL APPROACH PARAMETERS			
LNAV Gradient	Baro-VNAV		TCH
	VPA	MNM T	
5.24 % (3.00°)	3.00°	-20°C	52 FT

SBAS DATA	
Approach ID	E21A
Service Provider	EGNOS
CRC remainder	F8 EE 25 29
Channel number	61734
Data Block	SEE EFRO AD 2.15 - 9