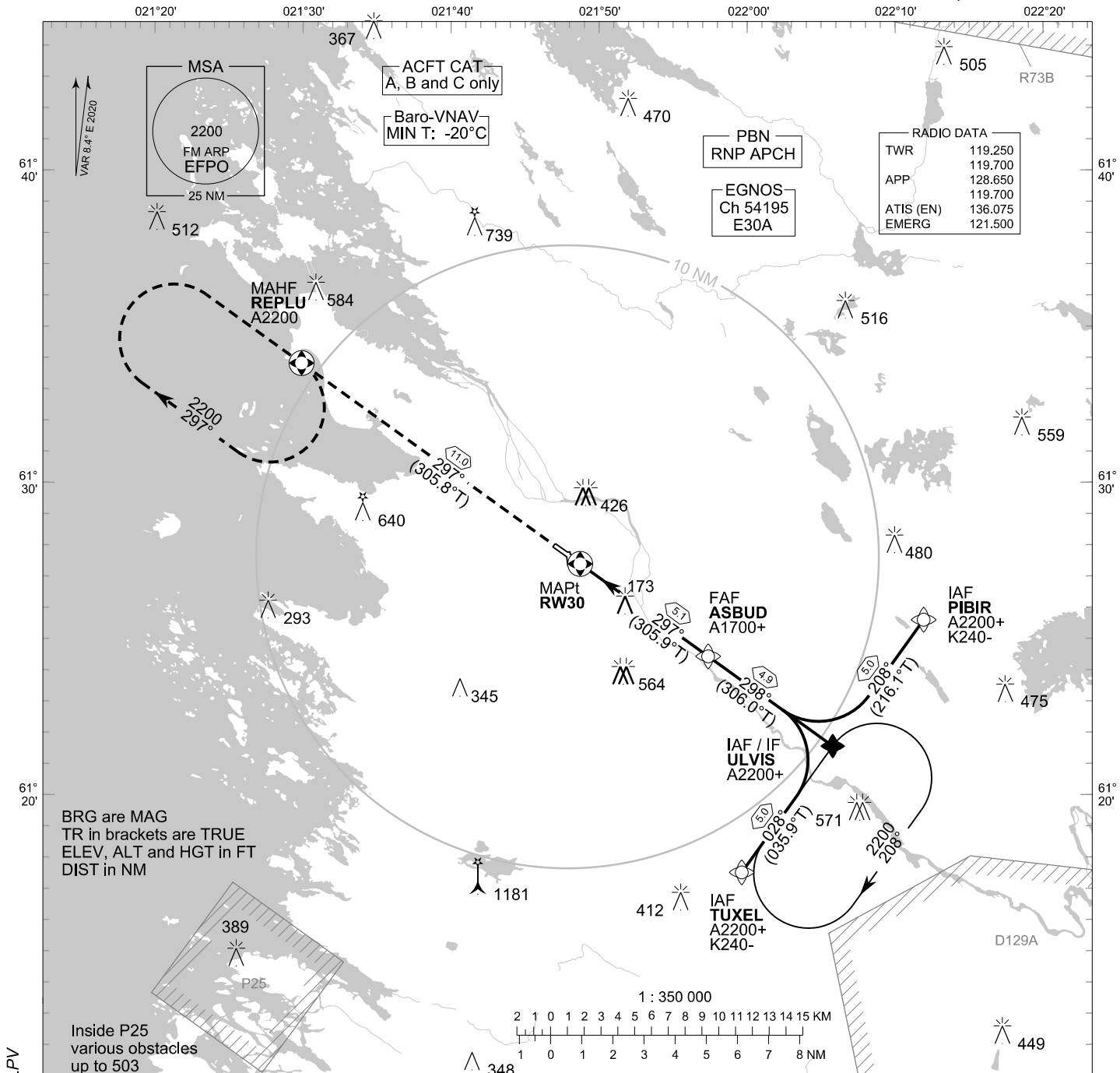


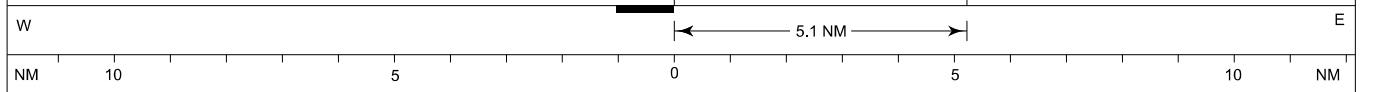
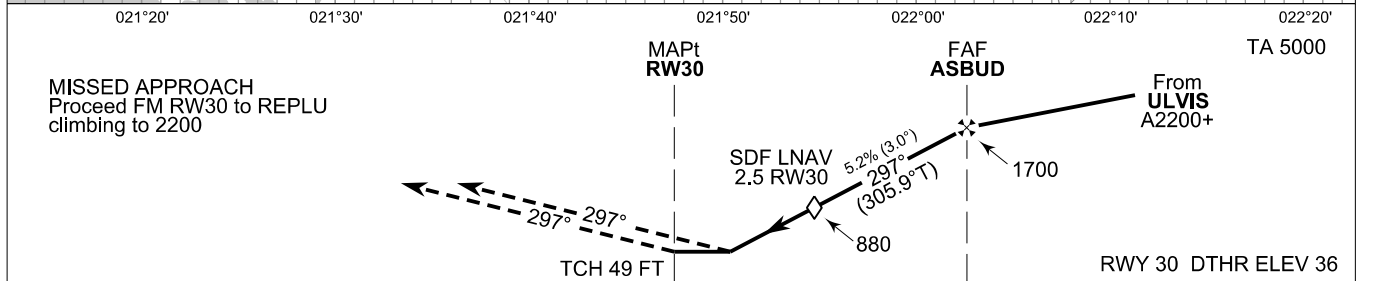
INSTRUMENT
APPROACH CHART - ICAO

ELEV 45 FT
HEIGHTS RELATED TO
DTHR RWY 30 ELEV 36 FT

RNP RWY 30
PORI AERODROME
PORI, FINLAND



CHG: MAG VAR, OCA (H), ADDN LPV



OCA (H)	A	B	C
LPV	258 (222)	270 (234)	278 (242)
LNAV/VNAV	284 (248)	297 (261)	340 (304)
LNAV	420 (390)		
Circling	730 (680)	730 (680)	960 (920)

DIST FM THR	2.0 NM		3.0 NM		4.0 NM	
Altitude (Height)	720 (690)		1040 (1000)		1360 (1320)	
	kt	90	100	120	140	160
FAF - MAPt 5.1 NM	min:sec	3:23	3:03	2:32	2:10	1:54
Rate of descent	ft/min	480	530	640	740	850

Timing not authorized for defining the MAPt

EFPO RNP RWY 30										
PROC ID NAV SPEC	SEQ NR	P/T	WPT			MAG GEO TR	DIST NM	Turn Direction	Constraints	
			ID	Type	Flyover				LVL	Speed
H30 TUXEL RNP APCH	005	IF	TUXEL	IAF	-	028°	5.0	L	A2200+	K240-
	010	TF	ULVIS	IF	-	035.9°T 298°			A2200+	
	020	TF	ASBUD	FAF	-	306.0°T 297°	4.9	A1700+		
	030	TF	RW30	MAPt	Y	305.9°T 297°	5.1			
	040	TF	REPLU	MAHF	Y	305.8°T	11.0		A2200	

EFPO RNP RWY 30										
PROC ID NAV SPEC	SEQ NR	P/T	WPT			MAG GEO TR	DIST NM	Turn Direction	Constraints	
			ID	Type	Flyover				LVL	Speed
H30 ULVIS RNP APCH	010	IF	ULVIS	IAF/IF	-	298°	4.9		A2200+	
	020	TF	ASBUD	FAF	-	306.0°T 297°			A1700+	
	030	TF	RW30	MAPt	Y	305.9°T 297°	5.1			
	040	TF	REPLU	MAHF	Y	305.8°T	11.0		A2200	

EFPO RNP RWY 30										
PROC ID NAV SPEC	SEQ NR	P/T	WPT			MAG GEO TR	DIST NM	Turn Direction	Constraints	
			ID	Type	Flyover				LVL	Speed
H30 PIBIR RNP APCH	005	IF	PIBIR	IAF	-	208°	5.0	R	A2200+	K240-
	010	TF	ULVIS	IF	-	216.1°T 298°			A2200+	
	020	TF	ASBUD	FAF	-	306.0°T 297°	4.9	A1700+		
	030	TF	RW30	MAPt	Y	305.9°T 297°	5.1			
	040	TF	REPLU	MAHF	Y	305.8°T	11.0		A2200	

RNAV Holdings							
ID	INBD TR	INBD MAG	Turn Direction	Speed	MNM HLDG LVL	TIME	DIST NM
ULVIS	035.9°T	028°	Right	K230-	A2200	1 MIN	-
REPLU	125.5°T	117°	Right	K230-	A2200	1 MIN	-

WPT COORD
SEE PAGE EFPO AD 2.15 - 1

FINAL APPROACH PARAMETERS			
LNAV Gradient	Baro-VNAV		TCH
	VPA	MNM T	
5.24 % (3.00°)	3.00°	-20°C	49 FT

SBAS DATA	
Approach ID	E30A
Service Provider	EGNOS
CRC remainder	A2 31 E6 C6
Channel number	54195
Data Block	SEE EFPO AD 2.15 - 9