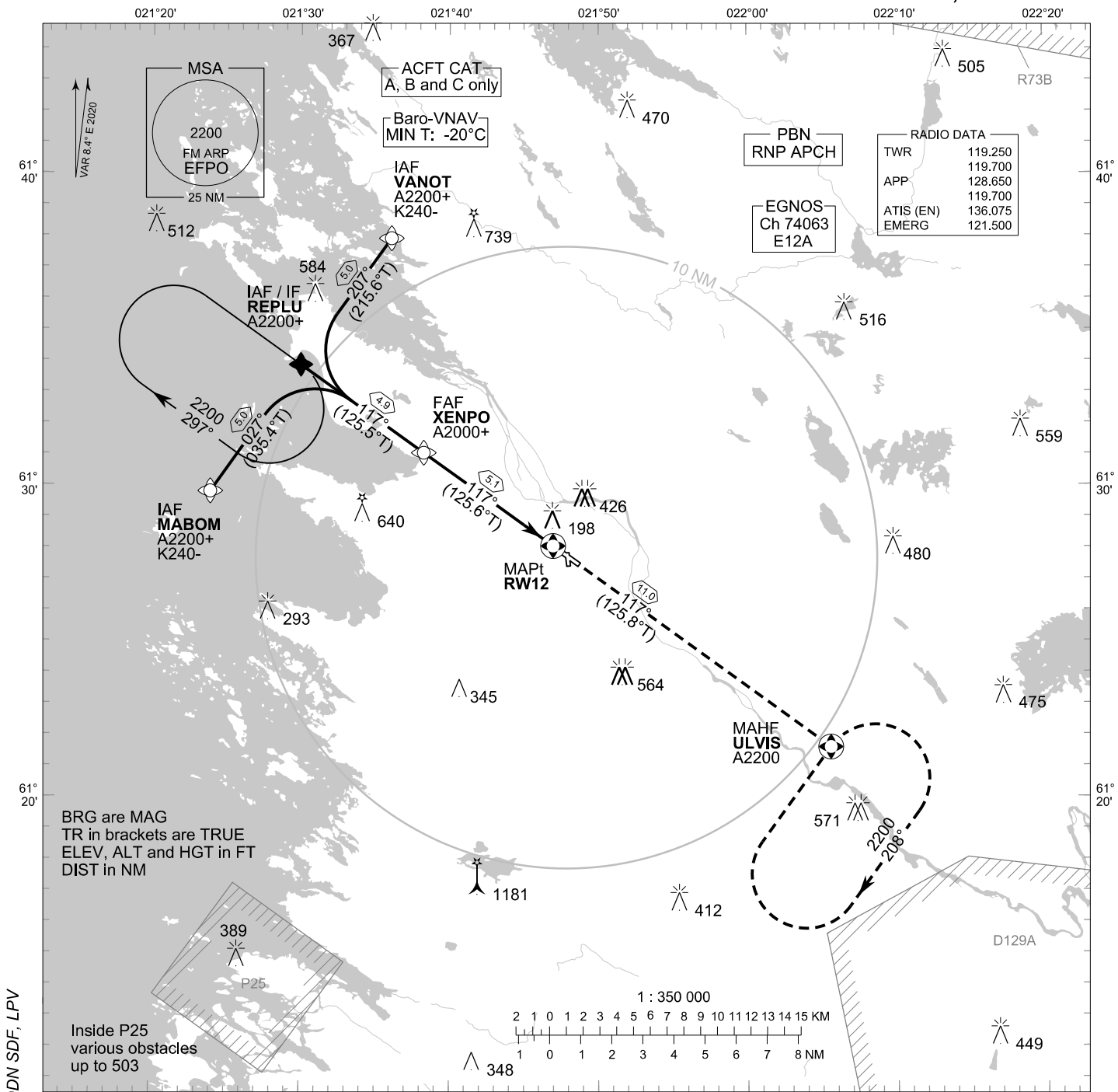


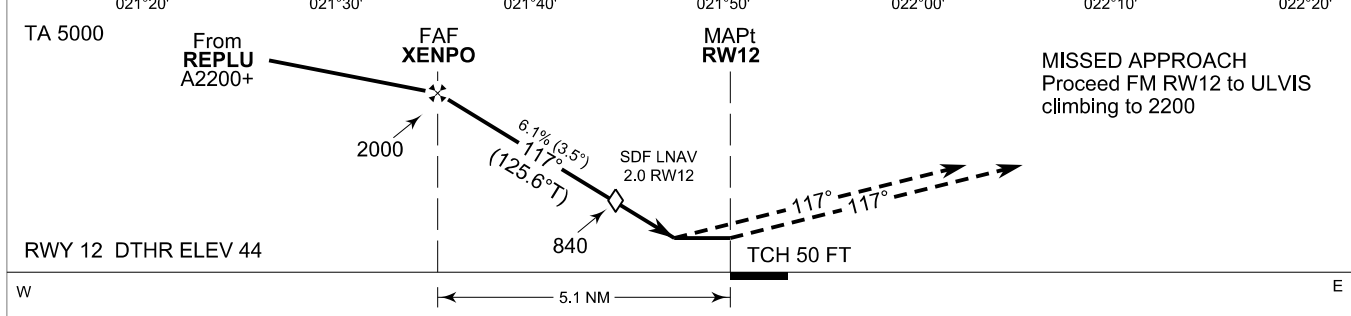
**INSTRUMENT
APPROACH CHART - ICAO**

ELEV 45 FT
HEIGHTS RELATED TO
DTHR RWY 12 ELEV 44 FT

**RNP RWY 12
PORI AERODROME
PORI, FINLAND**



CHG: MAG VAR, REF ELEV, ADDN SDF, LPV



W ← 5.1 NM → E

OCA (H)	A	B	C
LPV	291 (247)	307 (263)	318 (274)
LNAV/VNAV	372 (328)	387 (343)	399 (355)
LNAV	450 (400)		
Circling	730 (680)	730 (680)	960 (920)

DIST FM THR	4.0 NM	3.0 NM	2.0 NM	1.0 NM		
Altitude (Height)	1580 (1540)	1210 (1170)	840 (790)	470 (420)		
	kt	90	100	120	140	160
FAF - MAPt 5.1 NM	min:sec	3:25	3:05	2:34	2:12	1:55
Rate of descent	ft/min	560	620	740	870	990

Timing not authorized for defining the MAPt

EFPO RNP RWY 12										
PROC ID NAV SPEC	SEQ NR	P/T	WPT			MAG GEO TR	DIST NM	Turn Direction	Constraints	
			ID	Type	Flyover				LVL	Speed
H12 VANOT RNP APCH	005	IF	VANOT	IAF	-	207°	5.0	L	A2200+	K240-
	010	TF	REPLU	IF	-	215.6°T 117°			A2200+	
	020	TF	XENPO	FAF	-	125.5°T 117°	4.9	A2000+		
	030	TF	RW12	MAPt	Y	125.6°T 117°	5.1			
	040	TF	ULVIS	MAHF	Y	125.8°T	11.0		A2200	

EFPO RNP RWY 12										
PROC ID NAV SPEC	SEQ NR	P/T	WPT			MAG GEO TR	DIST NM	Turn Direction	Constraints	
			ID	Type	Flyover				LVL	Speed
H12 REPLU RNP APCH	010	IF	REPLU	IAF/IF	-	117°	4.9		A2200+	
	020	TF	XENPO	FAF	-	125.5°T 117°			A2000+	
	030	TF	RW12	MAPt	Y	125.6°T 117°	5.1			
	040	TF	ULVIS	MAHF	Y	125.8°T	11.0		A2200	

EFPO RNP RWY 12										
PROC ID NAV SPEC	SEQ NR	P/T	WPT			MAG GEO TR	DIST NM	Turn Direction	Constraints	
			ID	Type	Flyover				LVL	Speed
H12 MABOM RNP APCH	005	IF	MABOM	IAF	-	027°	5.0	R	A2200+	K240-
	010	TF	REPLU	IF	-	035.4°T 117°			A2200+	
	020	TF	XENPO	FAF	-	125.5°T 117°	4.9	A2000+		
	030	TF	RW12	MAPt	Y	125.6°T 117°	5.1			
	040	TF	ULVIS	MAHF	Y	125.8°T	11.0		A2200	

RNAV Holdings							
ID	INBD TR	INBD MAG	Turn Direction	Speed	MNM HLDG LVL	TIME	DIST NM
REPLU	125.5°T	117°	Right	K230-	A2200	1 MIN	-
ULVIS	035.9°T	028°	Right	K230-	A2200	1 MIN	-

WPT COORD
SEE PAGE EFPO AD 2.15 - 1

FINAL APPROACH PARAMETERS			
LNAV Gradient	Baro-VNAV		TCH
	VPA	MNM T	
6.12 % (3.50°)	3.50°	-20°C	50 FT

SBAS DATA	
Approach ID	E12A
Service Provider	EGNOS
CRC remainder	BA 29 C4 A2
Channel number	74063
Data Block	SEE EFPO AD 2.15 - 9