

AIP SUPPLEMENT - SUOMI / FINLAND

Aeronautical Information Service

www.ais.fi

Fintraffic ANS, PL 157, FI-01531 VANTAA, ais@fintraffic.fi

AIP SUP NR
108 / 2024

AIRAC

WEF
05 SEP 2024

SAVONLINNAN LENTOASEMA (EFSA), MITTARILÄHESTYMISMENETELMÄN ILS Y or LOC Y RWY 12 KÄYTTÖÖNOTTO

REF AIP AD 2 EFSA

Tämän supplementin liitteenä on julkaistu mittarilähestymismenetelmä EFSA ILS Y or LOC Y RWY 12. Menetelmän tarkoituksena on tukea toimintaa GNSS-katkos- tai häiriötilanteissa.

SAVONLINNA AERODROME (EFSA), INTRODUCTION OF INSTRUMENT APPROACH PROCEDURE ILS Y or LOC Y RWY 12

REF AIP AD 2 EFSA

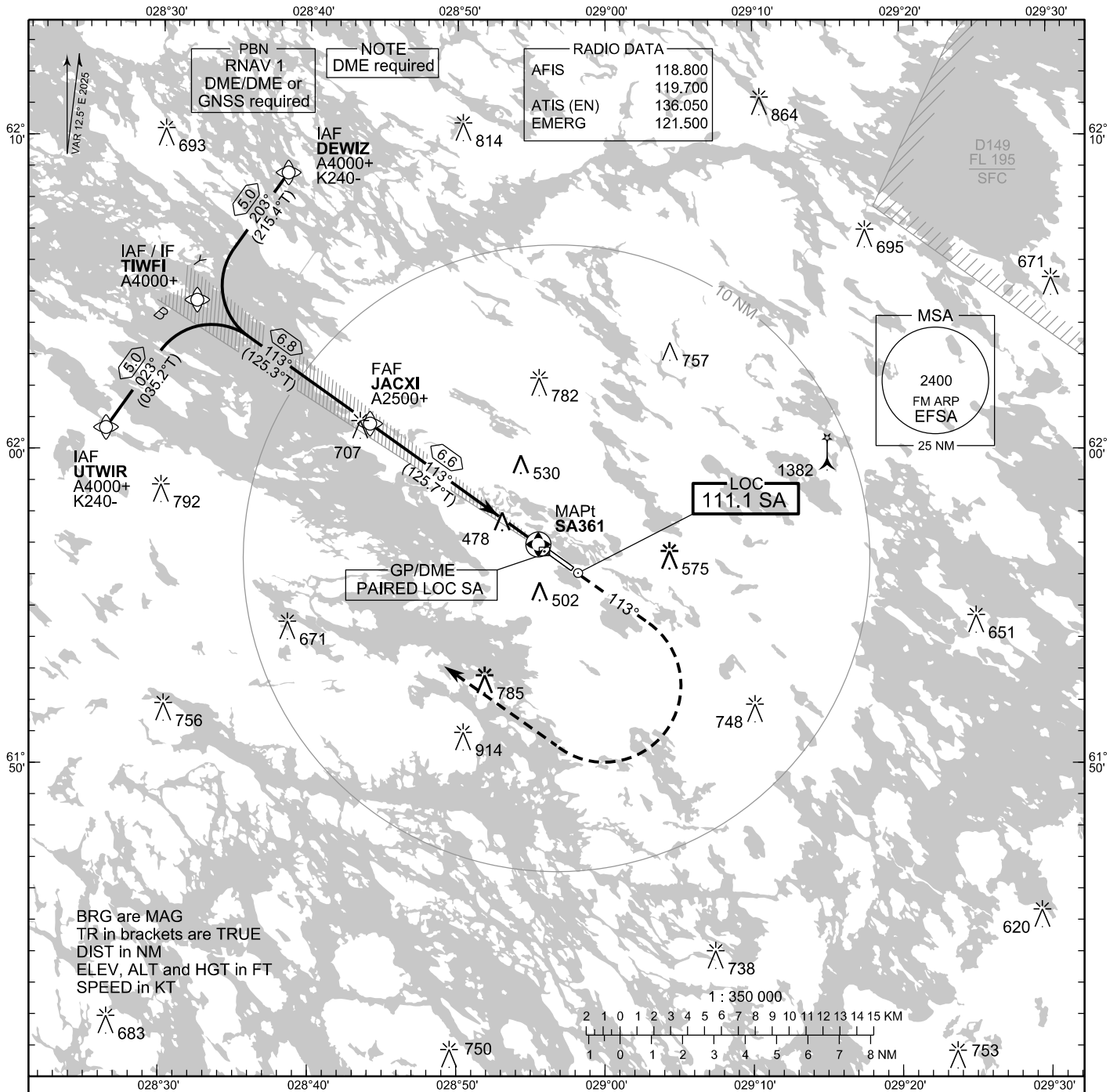
The instrument approach procedure EFSA ILS Y or LOC Y RWY 12 has been published as an Appendix to this supplement. The purpose of the procedure is to support operations in situations of GNSS outage or degradation.

LIITE / APPENDIX: EFSA ILS Y or LOC Y RWY 12

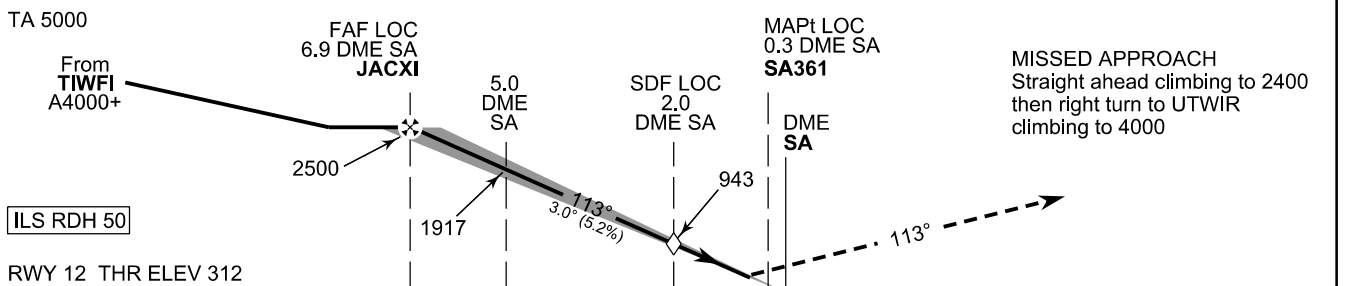
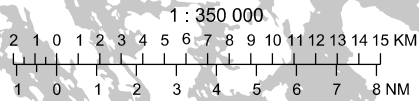
**INSTRUMENT
APPROACH CHART - ICAO**

ELEV 312 FT
HEIGHTS RELATED TO
THR RWY 12 ELEV 312 FT

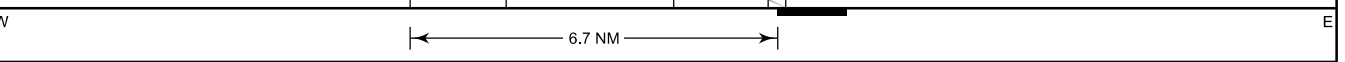
**ILS Y or LOC Y RWY 12
SAVONLINNA AERODROME
SAVONLINNA, FINLAND**



BRG are MAG
TR in brackets are TRUE
DIST in NM
ELEV, ALT and HGT in FT
SPEED in KT



MISSED APPROACH
Straight ahead climbing to 2400
then right turn to UTWIR
climbing to 4000



	OCA (H)	A	B	C	D
ILS CAT I		462 (150)	472 (160)	481 (169)	493 (181)
LOC		770 (460)			
LOC WO SDF		940 (630)			
Circling		800 (490)	830 (520)	970 (660)	1180 (870)

	kt	90	100	120	140	160
FAF - MAPt 6.5 NM	min:sec	4:22	3:56	3:16	2:48	2:27
Rate of descent	ft/min	480	530	640	740	850

Timing not authorized for defining the MAPt

EFSA ILS Y or LOC Y RWY 12										
PROC ID NAV SPEC	SEQ NR	P/T	WPT			MAG	GEO TR	DIST NM	Constraints	
			ID	Type	Flyover				LVL	Speed
I12 DEWIZ RNAV 1	005	IF	DEWIZ	IAF	-	203°	215.4°T	5.0	A4000+	K240-
	010	TF	TIWFI	IF	-				113°	125.3°T
	020	TF	JACXI	FAF LOC	-	A2500+				
	030	TF	SA361	MAPt LOC	Y	113°	125.5°T	-		
	040	CA	-	-	-				A2400+	
	050	DF	UTWIR	MATF	-	-	-	-	A4000	

EFSA ILS Y or LOC Y RWY 12										
PROC ID NAV SPEC	SEQ NR	P/T	WPT			MAG	GEO TR	DIST NM	Constraints	
			ID	Type	Flyover				LVL	Speed
I12 TIWFI RNAV 1	010	IF	TIWFI	IAF/IF	-	113°	125.3°T	6.8	A4000+	
	020	TF	JACXI	FAF LOC	-				A2500+	
	030	TF	SA361	MAPt LOC	Y	113°	125.5°T	-		
	040	CA	-	-	-				A2400+	
	050	DF	UTWIR	MATF	-	-	-	-	A4000	

EFSA ILS Y or LOC Y RWY 12										
PROC ID NAV SPEC	SEQ NR	P/T	WPT			MAG	GEO TR	DIST NM	Constraints	
			ID	Type	Flyover				LVL	Speed
I12 UTWIR RNAV 1	005	IF	UTWIR	IAF	-	023°	035.2°T	5.0	A4000+	K240-
	010	TF	TIWFI	IF	-				113°	125.3°T
	020	TF	JACXI	FAF LOC	-	A2500+				
	030	TF	SA361	MAPt LOC	Y	113°	125.5°T	-		
	040	CA	-	-	-				A2400+	
	050	DF	UTWIR	MATF	-	-	-	-	A4000	

WPT COORD	
ID	COORD
DEWIZ	620849.50N 0283828.72E
UTWIR	620041.36N 0282611.20E
TIWFI	620445.57N 0283219.14E
JACXI	620050.36N 0284404.05E
SA361	615700.18N 0285528.10E

FINAL APPROACH PARAMETERS			
LOC Gradient	ILS		RDH
	CAT	GPA	
5.24 % (3.00°)	I	3.00°	50 FT