

AIP SUPPLEMENT - SUOMI / FINLAND

Aeronautical Information Service

www.ais.fi

Fintraffic ANS, PL 157, FI-01531 VANTAA, ais@fintraffic.fi

AIP SUP NR
088 / 2024

AIRAC

WEF
11 JUL 2024

KUOPION LENTOASEMA (EFKU), LENTOMENETELMÄT AJALLA 11.7. - 5.9.2024

REF AIP SUP 085/2024

Alla luetellut lentomenetelmät on julkaistu ajalle **11.7. - 5.9.2024** tämän Supplementin liitteinä.

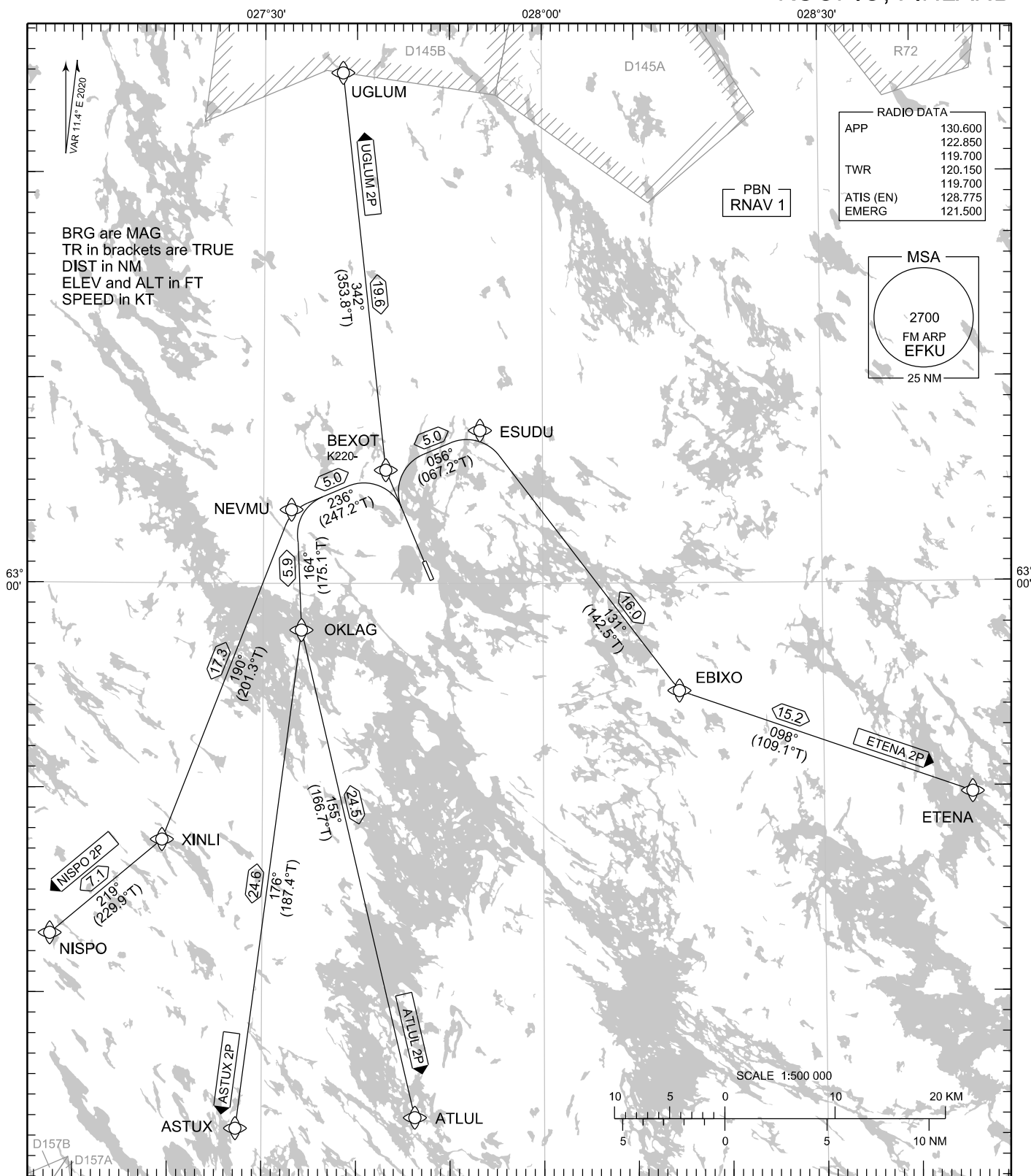
KUOPIO AERODROME (EFKU), INSTRUMENT APPROACH PROCEDURES FROM 11 JUL 2024 TO 05 SEP 2024

REF AIP SUP 085/2024

The instrument approach procedures listed below have been published **for the period of 11 JUL 2024 to 05 SEP 2024** as Appendices to this Supplement.

LIITTEET / APPENDICES:

1. EFKU RNAV SID RWY 33C
2. EFKU RNAV STAR RWY 33C
3. EFKU RNP RWY 33C



RNAV SID RWY 33C

ASTUX 2P ATLUL 2P ETENA 2P NISPO 2P UGLUM 2P

DME/DME OPS: NOT SUPPORTED

ROUTES: RNAV PROC CODING ON THE VERSO OF THE CHART

SQUAWK: WHEN LINING UP SQUAWK THE ASSIGNED CODE

INITIAL CLIMB: MNM TURNING ALT ACCORDING TO RTE CODING.

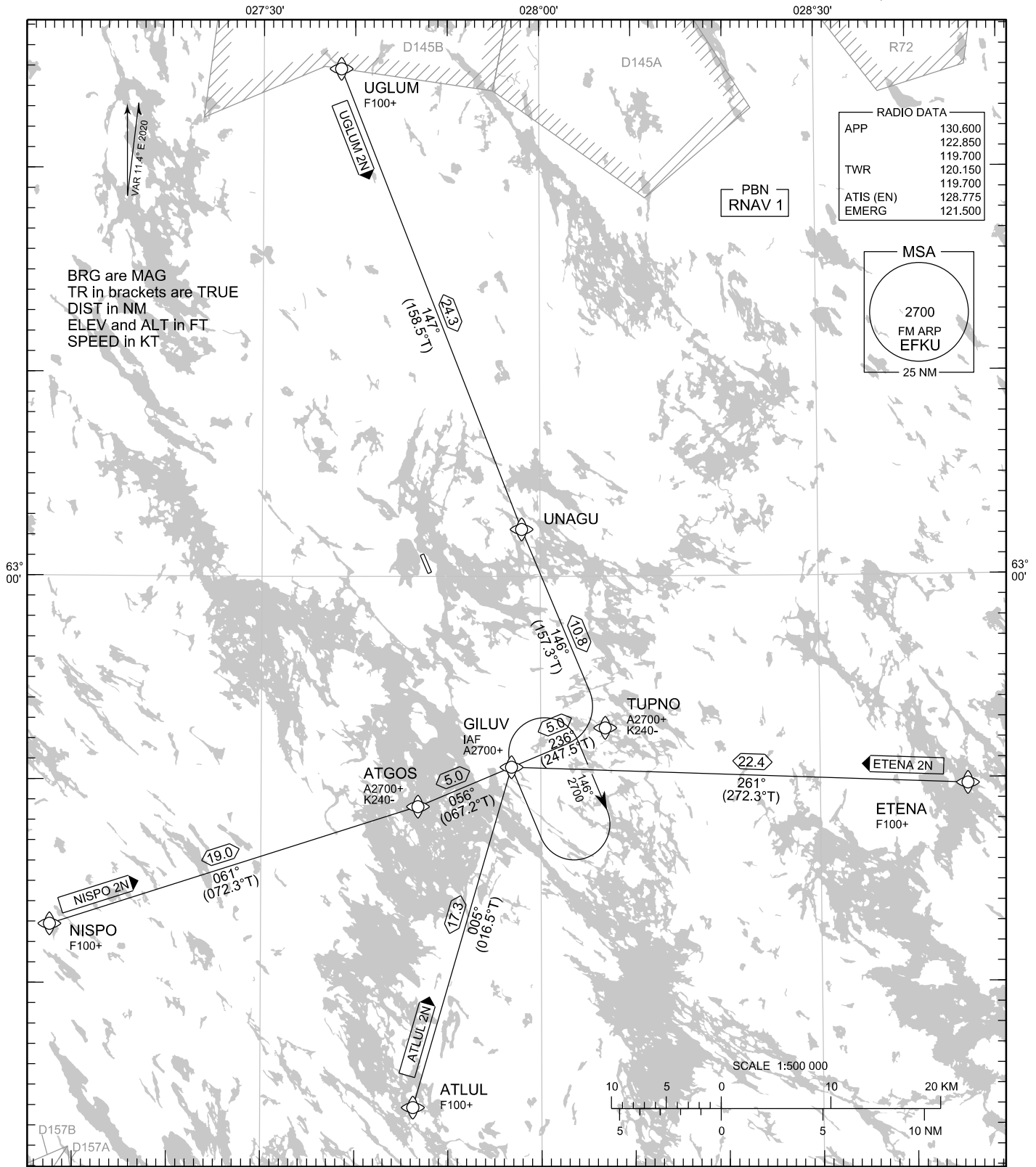
NOISE ABATEMENT: AFTER TAKE-OFF CLIMB AS RAPIDLY AS POSSIBLE TO AT LEAST 2000 FT ABOVE AD ELEV
PUBLISHED SID ROUTES ARE ALSO MINIMUM NOISE ROUTINGS

AREA MNM ALT: SEE AMA INDEX, AIP ENR 6.1 - 3

EFKU RNAV SID RWY 33C										
RTE NAV SPEC	SEQ NR	P/T	WPT		MAG	GEO TR	DIST NM	Turn Direction	Constraints	
			ID	Flyover					LVL	Speed
ASTUX 2P RNAV 1	010	CA	-	-	327°	338.4°T	-		A850+	
	020	DF	BEXOT	-	-	-	-			K220-
	030	TF	NEVMU	-	236°	247.2°T	5.0	L		
	040	TF	OKLAG	-	164°	175.1°T	5.9			
	050	TF	ASTUX	-	176°	187.4°T	24.6			
ATLUL 2P RNAV 1	010	CA	-	-	327°	338.4°T	-		A850+	
	020	DF	BEXOT	-	-	-	-			K220-
	030	TF	NEVMU	-	236°	247.2°T	5.0	L		
	040	TF	OKLAG	-	164°	175.1°T	5.9			
	050	TF	ATLUL	-	155°	166.7°T	24.5			
ETENA 2P RNAV 1	010	CA	-	-	327°	338.4°T	-		A850+	
	020	DF	BEXOT	-	-	-	-			K220-
	030	TF	ESUDU	-	056°	067.2°T	5.0	R		
	040	TF	EBIXO	-	131°	142.5°T	16.0	L		
	050	TF	ETENA	-	098°	109.1°T	15.2			
NISPO 2P RNAV 1	010	CA	-	-	327°	338.4°T	-		A850+	
	020	DF	BEXOT	-	-	-	-			K220-
	030	TF	NEVMU	-	236°	247.2°T	5.0	L		
	040	TF	XINLI	-	190°	201.3°T	17.3	R		
	050	TF	NISPO	-	219°	229.9°T	7.1			
UGLUM 2P RNAV 1	010	CA	-	-	327°	338.4°T	-		A850+	
	020	DF	BEXOT	-	-	-	-			K220-
	030	TF	UGLUM	-	342°	353.8°T	19.6			

WPT COORD

SEE PAGE EFKU AD 2.15 - 1



RNAV STAR RWY 33C
ATLUL 2N ETENA 2N NISPO 2N UGLUM 2N

DME/DME OPS:	NOT SUPPORTED	NOISE ABATEMENT:	AVOID OVERFLYING THE CITY OF KUOPIO BELOW 2000
ROUTES:	RNAV PROC CODING ON THE VERSO OF THE CHART ATC WILL GIVE DESCENT CLEARANCES	RCF:	SELECT TRANSPONDER CODE 7600
WPT CONSTRAINTS:	ALT / FL / SPEED CONSTRAINTS MUST ALWAYS BE FOLLOWED AS PUBLISHED UNLESS EXPLICITLY CANCELLED BY ATC		RNAV STAR HAS BEEN GIVEN AND ACKNOWLEDGED: FOLLOW THE STAR TO THE RESPECTIVE RWY AND EXECUTE IAP AND LAND
CD OPS:	BY ATC CLR IF TFC PERMITS. PLAN CD PATH ACCORDING TO STAR	AREA MNM ALT:	SEE AMA INDEX, AIP ENR 6.1 - 3
			DURING RADAR VECTORING BEFORE IAF: IN ACCORDANCE WITH THE RULES OF THE AIR

EFKU RNAV STAR RWY 33C										
RTE NAV SPEC	SEQ NR	P/T	WPT		MAG	GEO TR	DIST NM	Constraints		
			ID	Flyover				LVL	LVL	Speed
ATLUL 2N RNAV 1	010	IF	ATLUL	-	-	-	-	F100+		
	020	TF	GILUV	-	005°	016.5°T	17.3	A2700+		

ETENA 2N RNAV 1	010	IF	ETENA	-	-	-	-	F100+		
	020	TF	GILUV	-	261°	272.3°T	22.4	A2700+		

NISPO 2N RNAV 1	010	IF	NISPO	-	-	-	-	F100+		
	020	TF	ATGOS	-	061°	072.3°T	19.0	A2700+		K240-
	030	TF	GILUV	-	056°	067.2°T	5.0	A2700+		

UGLUM 2N RNAV 1	010	IF	UGLUM	-	-	-	-	F100+		
	020	TF	UNAGU	-	147°	158.5°T	24.3			
	030	TF	TUPNO	-	146°	157.3°T	10.8	A2700+		K240-
	040	TF	GILUV	-	236°	247.5°T	5.0	A2700+		

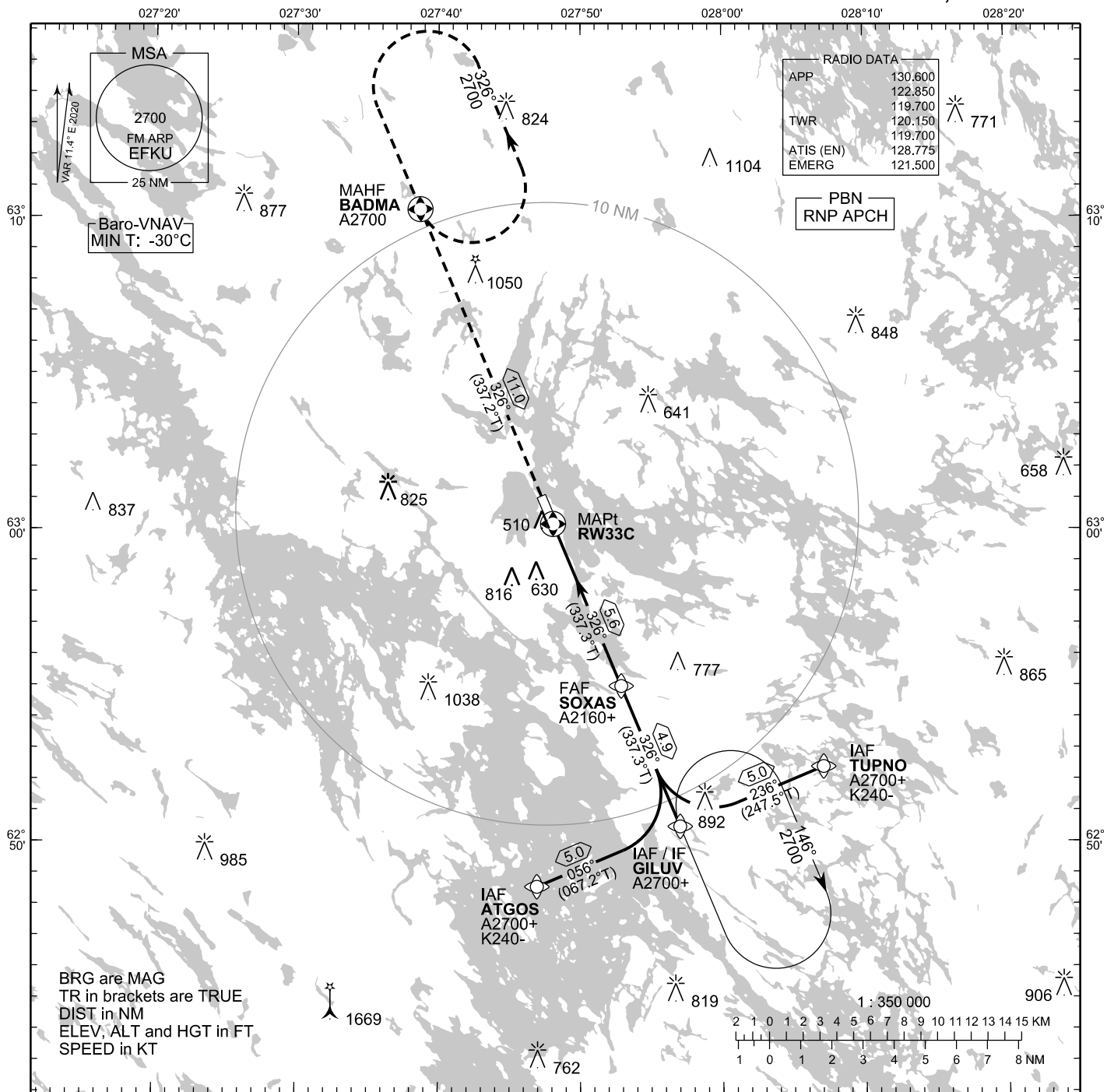
RNAV Holdings								
ID	INBD TR	INBD MAG	Turn Direction	Speed	MNM HLDG LVL	TIME	DIST NM	
GILUV	337.2°T	326°	Right	K230-	A2700	1 MIN	-	

WPT COORD
SEE PAGE EFKU AD 2.15 - 1

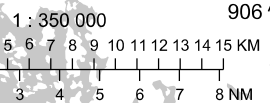
**INSTRUMENT
APPROACH CHART - ICAO**

ELEV 324 FT
HEIGHTS RELATED TO
THR RWY 33C ELEV 300 FT

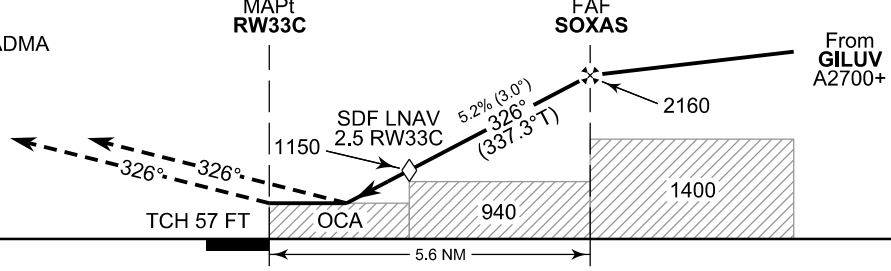
**RNP RWY 33C
KUOPIO AERODROME
KUOPIO, FINLAND**



BRG are MAG
TR in brackets are TRUE
DIST in NM
ELEV, ALT and HGT in FT
SPEED in KT



MISSED APPROACH
Proceed FM RW33C to BADMA
climbing to 2700



NM 5 0 5 10 NM

OCA (H)	A	B	C	D
LNAV/VNAV	623 (323)	635 (335)	644 (344)	654 (354)
LNAV	760 (460)			
Circling	930 (610)	1120 (790)	1210 (890)	1220 (900)

DIST FM THR	2.0 NM	3.0 NM	4.0 NM	5.0 NM		
Altitude (Height)	990 (690)	1310 (1010)	1630 (1330)	1950 (1650)		
	kt	90	100	120	140	160
FAF - MAPt 5.6 NM	min:sec	3:46	3:23	2:49	2:25	2:07
Rate of descent	ft/min	480	530	640	740	850

Timing not authorized for defining the MAPt

EFKU RNP RWY 33C										
PROC ID NAV SPEC	SEQ NR	P/T	WPT			MAG	GEO TR	DIST NM	Constraints	
			ID	Type	Flyover				LVL	Speed
H33C ATGOS RNP APCH	005	IF	ATGOS	IAF	-				A2700+	K240-
	010	TF	GILUV	IF	-	056°	067.2°T	5.0	A2700+	
	020	TF	SOXAS	FAF	-	326°	337.3°T	4.9	A2160+	
	030	TF	RW33C	MAPt	Y	326°	337.3°T	5.6		
	040	TF	BADMA	MAHF	Y	326°	337.2°T	11.0	A2700	

EFKU RNP RWY 33C										
PROC ID NAV SPEC	SEQ NR	P/T	WPT			MAG	GEO TR	DIST NM	Constraints	
			ID	Type	Flyover				LVL	Speed
H33C GILUV RNP APCH	010	IF	GILUV	IAF/IF	-				A2700+	
	020	TF	SOXAS	FAF	-	326°	337.3°T	4.9	A2160+	
	030	TF	RW33C	MAPt	Y	326°	337.3°T	5.6		
	040	TF	BADMA	MAHF	Y	326°	337.2°T	11.0	A2700	

EFKU RNP RWY 33C										
PROC ID NAV SPEC	SEQ NR	P/T	WPT			MAG	GEO TR	DIST NM	Constraints	
			ID	Type	Flyover				LVL	Speed
H33C TUPNO RNP APCH	005	IF	TUPNO	IAF	-				A2700+	K240-
	010	TF	GILUV	IF	-	236°	247.5°T	5.0	A2700+	
	020	TF	SOXAS	FAF	-	326°	337.3°T	4.9	A2160+	
	030	TF	RW33C	MAPt	Y	326°	337.3°T	5.6		
	040	TF	BADMA	MAHF	Y	326°	337.2°T	11.0	A2700	

RNAV Holdings							
ID	INBD TR	INBD MAG	Turn Direction	Speed	MNM HLDG LVL	TIME	DIST NM
GILUV	337.2°T	326°	Right	K230-	A2700	1 MIN	-
BADMA	157.2°T	146°	Left	K230-	A2700	1 MIN	-

WPT COORD	
ID	COORD
ATGOS	624834.40N 0274656.89E
TUPNO	625225.06N 0280704.33E
GILUV	625030.09N 0275659.95E
SOXAS	625500.04N 0275252.44E
RW33C	630011.51N 0274805.13E
BADMA	631016.14N 0273842.08E

FINAL APPROACH PARAMETERS			
LNAV Gradient	Baro-VNAV		TCH
	VPA	MNM T	
5.24 % (3.00°)	3.00°	-30°C	57 FT